

For Research Use Only

Myosin Light Chain 2/MLC-2V Monoclonal antibody, PBS Only

Catalog Number: 60229-1-PBS



Basic Information

Catalog Number:

60229-1-PBS

Size:

100ug, Concentration: 1mg/ml by
Nanodrop;

Source:

Mouse

Isotype:

IgG1

Immunogen Catalog Number:

AG1356

GenBank Accession Number:

BC015821

GeneID (NCBI):

4633

UNIPROT ID:

P10916

Full Name:

myosin, light chain 2, regulatory,
cardiac, slow

Calculated MW:

19 kDa

Observed MW:

18 kDa

Purification Method:

Protein A purification

CloneNo.:

5A1F1

Applications

Tested Applications:

WB, IHC, IF/ICC, Indirect ELISA

Species Specificity:

human, mouse, rat, pig, rabbit

Background Information

MYL2, also named as MLC-2v and MLC-2, is ventricular/cardiac muscle isoform. Defects in MYL2 are the cause of cardiomyopathy familial hypertrophic type 10 (CMH10). Defects in MYL2 are the cause of cardiomyopathy familial hypertrophic with mid-left ventricular chamber type 2 (MVC2). MYL2 has been widely used as a marker of mature ventricular cardiomyocytes.

Storage

Storage:

Store at -80°C.

Storage Buffer:

PBS Only

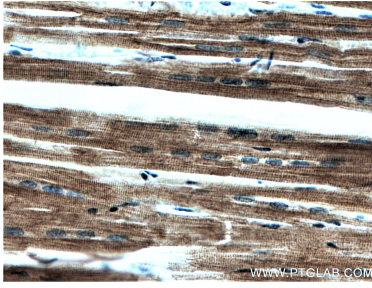
For technical support and original validation data for this product please contact:

T: 1 (888) 4PTGLAB (1-888-478-4522) (toll free
in USA), or 1(312) 455-8498 (outside USA)

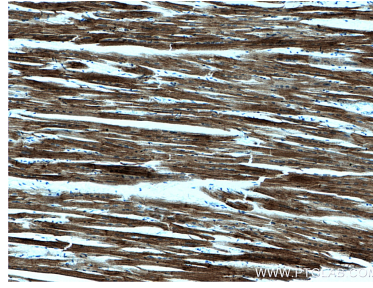
E: proteintech@ptglab.com
W: ptglab.com

This product is exclusively available under Proteintech Group brand and is not available to purchase from any other manufacturer.

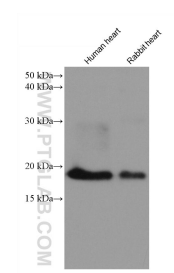
Selected Validation Data



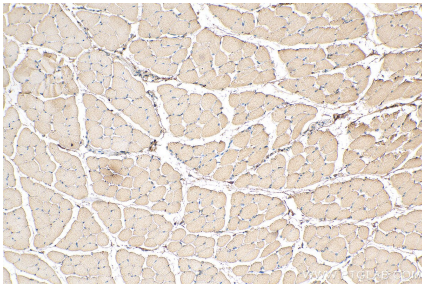
Immunohistochemical analysis of paraffin-embedded human heart tissue slide using 60229-1-Ig (Myosin Light Chain 2 antibody) at dilution of 1:500 (under 0x lens). This data was developed using the same antibody clone with 60229-1-PBS in a different storage buffer formulation.



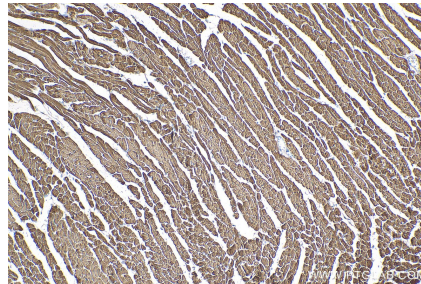
Immunohistochemical analysis of paraffin-embedded human heart tissue slide using 60229-1-Ig (Myosin Light Chain 2 antibody) at dilution of 1:500 (under 0x lens). This data was developed using the same antibody clone with 60229-1-PBS in a different storage buffer formulation.



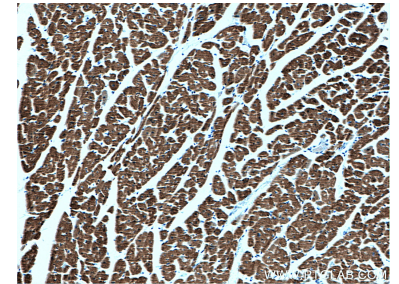
Various lysates were subjected to SDS PAGE followed by western blot with 60229-1-Ig (Myosin Light Chain 2/MLC-2V antibody) at dilution of 1:10000 incubated at room temperature for 1.5 hours. This data was developed using the same antibody clone with 60229-1-PBS in a different storage buffer formulation.



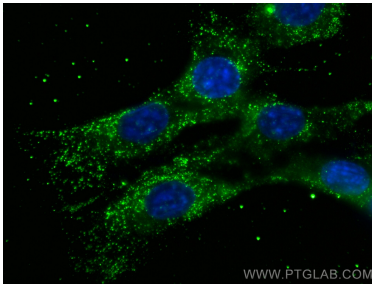
Immunohistochemical analysis of paraffin-embedded mouse skeletal muscle tissue slide using 60229-1-Ig (Myosin Light Chain 2/MLC-2V antibody) at dilution of 1:1000 (under 10x lens). Heat mediated antigen retrieval with Tris-EDTA buffer (pH 9.0). This data was developed using the same antibody clone with 60229-1-PBS in a different storage buffer formulation.



Immunohistochemical analysis of paraffin-embedded mouse heart tissue slide using 60229-1-Ig (Myosin Light Chain 2/MLC-2V antibody) at dilution of 1:1000 (under 10x lens). Heat mediated antigen retrieval with Tris-EDTA buffer (pH 9.0). This data was developed using the same antibody clone with 60229-1-PBS in a different storage buffer formulation.



Immunohistochemical analysis of paraffin-embedded human heart tissue slide using 60229-1-Ig (Myosin Light Chain 2 antibody) at dilution of 1:500 (under 10x lens). This data was developed using the same antibody clone with 60229-1-PBS in a different storage buffer formulation.



Immunofluorescent analysis of (-20°C Methanol) fixed C2C12 cells using Myosin Light Chain 2/MLC-2V antibody (60229-1-Ig, Clone: 5A1F1) at dilution of 1:800 and CoraLite®488-Conjugated AffiniPure Goat Anti-Mouse IgG(H+L). This data was developed using the same antibody clone with 60229-1-PBS in a different storage buffer formulation.