

For Research Use Only

Desmin Monoclonal antibody

Catalog Number: 60226-1-Ig **12 Publications**



Basic Information

Catalog Number: 60226-1-Ig	GenBank Accession Number: BC032116	Purification Method: Protein A purification
Size: 150ul , Concentration: 1200 µg/ml by Bradford method using BSA as the standard;	GeneID (NCBI): 1674	CloneNo.: 3E12C8
Source: Mouse	UNIPROT ID: P17661	Recommended Dilutions: WB 1:500-1:2000
Isotype: IgG2a	Full Name: desmin	
Immunogen Catalog Number: AG9675	Calculated MW: 470 aa, 54 kDa	
	Observed MW: 55 kDa	

Applications

Tested Applications:
WB, ELISA

Cited Applications:
WB, IHC, IF

Species Specificity:
human, pig

Cited Species:
human, mouse, rat

Positive Controls:

WB : Human heart, human testis tissue, human heart tissue, human placenta tissue, pig heart tissue, pig colon tissue

Background Information

Desmin is the main intermediate filament protein in skeletal and cardiac muscle cells and is essential for both the structural integrity and the survival of muscle cells. As an abundant muscle-specific protein, desmin has been widely used as a marker of muscle derived tumors. Anti-desmin is also valuable in the differential diagnosis of tumors of uncertain origin.

Notable Publications

Author	Pubmed ID	Journal	Application
Qian Feng	27986413	Reprod Biomed Online	IF
Xiaohong Xu	34107901	BMC Nephrol	WB
Pan Gao	25017795	Biochim Biophys Acta	WB

Storage

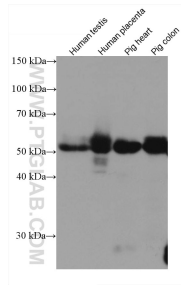
Storage:
Store at -20°C. Stable for one year after shipment.
Storage Buffer:
PBS with 0.02% sodium azide and 50% glycerol pH 7.3.
Aliquoting is unnecessary for -20°C storage

*** 20ul sizes contain 0.1% BSA

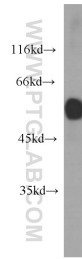
For technical support and original validation data for this product please contact:
T: 1 (888) 4PTGLAB (1-888-478-4522) (toll free in USA), or 1(312) 455-8498 (outside USA)
E: proteintech@ptglab.com
W: ptglab.com

This product is exclusively available under Proteintech Group brand and is not available to purchase from any other manufacturer.

Selected Validation Data



Various lysates were subjected to SDS PAGE followed by western blot with 60226-1-Ig (Desmin antibody) at dilution of 1:5000 incubated at room temperature for 1.5 hours.



human heart tissue were subjected to SDS PAGE followed by western blot with 60226-1-Ig (DES antibody) at dilution of 1:1000 incubated at room temperature for 1.5 hours.