

For Research Use Only

# CD44 Monoclonal antibody, PBS Only (Detector)

Catalog Number: 60224-3-PBS



## Basic Information

<b>Catalog Number:</b> 60224-3-PBS	<b>GenBank Accession Number:</b> BC004372	<b>Purification Method:</b> Protein A Magarose purification
<b>Size:</b> 100ug , Concentration: 1 mg/ml by Nanodrop;	<b>GeneID (NCBI):</b> 960	<b>CloneNo.:</b> 1A12A7
<b>Source:</b> Mouse	<b>ENSEMBL Gene ID:</b> ENSG00000026508	
<b>Isotype:</b> IgG2b	<b>UNIPROT ID:</b> P16070	
<b>Immunogen Catalog Number:</b> AG7633	<b>Full Name:</b> CD44 molecule (Indian blood group)	
	<b>Calculated MW:</b> 742 aa, 82 kDa	

## Applications

**Tested Applications:**  
IF/ICC, Cytometric bead array, Indirect ELISA

**Species Specificity:**  
human

## Product Information

60224-3-PBS targets CD44 as part of a matched antibody pair:

MP50724-1: 60224-2-PBS capture and 60224-3-PBS detection (validated in Cytometric bead array)

MP50724-2: 60224-4-PBS capture and 60224-3-PBS detection (validated in Cytometric bead array)

Unconjugated mouse monoclonal antibody pair in PBS only (BSA and azide free) storage buffer at a concentration of 1 mg/mL, ready for conjugation.

This conjugation ready format makes antibodies ideal for use in many applications including: ELISAs, multiplex assays requiring matched pairs, mass cytometry, and multiplex imaging applications. Antibody use should be optimized by the end user for each application and assay.

## Storage

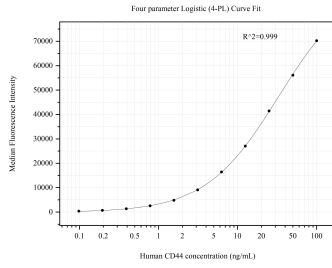
**Storage:**  
Store at -80°C.

**Storage Buffer:**  
PBS Only

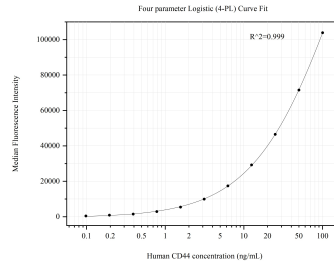
For technical support and original validation data for this product please contact:  
T: 1 (888) 4PTGLAB (1-888-478-4522) (toll free in USA), or 1(312) 455-8498 (outside USA)      E: [proteintech@ptglab.com](mailto:proteintech@ptglab.com)      W: [ptglab.com](http://ptglab.com)

**This product is exclusively available under Proteintech Group brand and is not available to purchase from any other manufacturer.**

## Selected Validation Data



Cytometric bead array standard curve of MP50724-1, CD44 Monoclonal Matched Antibody Pair, PBS Only. Capture antibody: 60224-2-PBS. Detection antibody: 60224-3-PBS. Standard:Ag7633. Range: 0.098-100 ng/mL.



Cytometric bead array standard curve of MP50724-2, CD44 Monoclonal Matched Antibody Pair, PBS Only. Capture antibody: 60224-4-PBS. Detection antibody: 60224-3-PBS. Standard:Ag7633. Range: 0.098-100 ng/mL.