

For Research Use Only

Galectin-1 Monoclonal antibody, PBS Only



Catalog Number: 60223-1-PBS

Featured Product

Basic Information

Catalog Number:

60223-1-PBS

Size:

100ug, Concentration: 1mg/ml by Nanodrop;

Source:

Mouse

Isotype:

IgG1

Immunogen Catalog Number:

AG2432

GenBank Accession Number:

BC020675

GeneID (NCBI):

3956

UNIPROT ID:

P09382

Full Name:

lectin, galactoside-binding, soluble, 1

Calculated MW:

15 kDa

Observed MW:

13 kDa

Purification Method:

Protein A purification

CloneNo.:

3G10D2

Applications

Tested Applications:

WB, IHC, IF/ICC, IF-P, Indirect ELISA

Species Specificity:

human

Background Information

Galectins are a family of animal lectins defined by shared characteristic amino-acid sequences and affinity for β -galactose-containing oligosaccharides (PMID: 8063692). Galectin-1 contains one carbohydrate recognition domain (CRD) and occurs as a monomer as well as a non-covalent homodimer (PMID: 16840800). It is differentially expressed by various normal and pathological tissues. Galectin-1 is a multifunctional protein that is involved in cell adhesion, migration, proliferation, apoptosis, inflammation, tumour transformation and growth (PMID:15785741).

Storage

Storage:

Store at -80°C .

Storage Buffer:

PBS Only

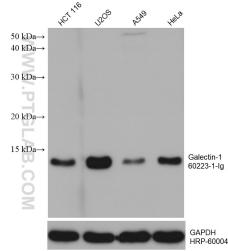
For technical support and original validation data for this product please contact:

T: 1 (888) 4PTGLAB (1-888-478-4522) (toll free in USA), or 1(312) 455-8498 (outside USA)

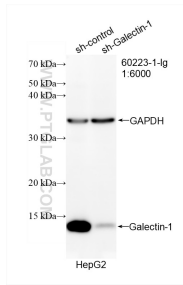
E: proteintech@ptglab.com
W: ptglab.com

This product is exclusively available under Proteintech Group brand and is not available to purchase from any other manufacturer.

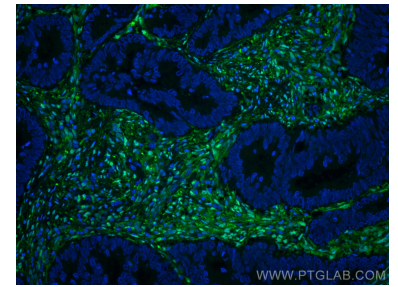
Selected Validation Data



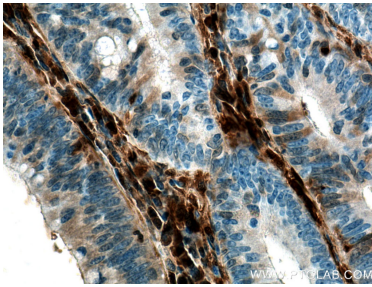
Various lysates were subjected to SDS PAGE followed by western blot with 60223-1-Ig (Galectin-1 antibody) at dilution of 1:15000 incubated at room temperature for 1.5 hours. The membrane was stripped and reblotted with HRP-conjugated GAPDH Monoclonal antibody (HRP-60004) as loading control. This data was developed using the same antibody clone with 60223-1-PBS in a different storage buffer formulation.



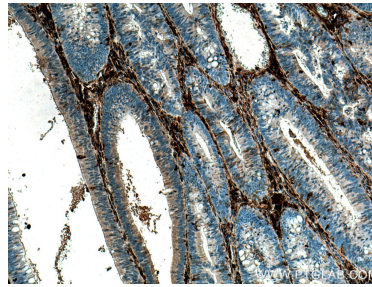
WB result of Galectin-1 antibody (60223-1-Ig; 1:6000; incubated at room temperature for 1.5 hours) with sh-Control and sh-Galectin-1 transfected HepG2 cells. This data was developed using the same antibody clone with 60223-1-PBS in a different storage buffer formulation.



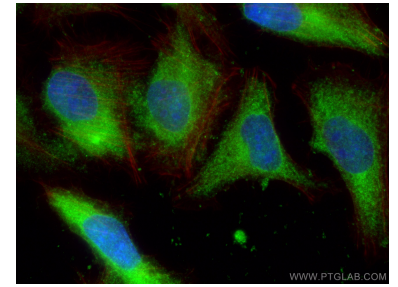
Immunofluorescent analysis of (4% PFA) fixed human colon cancer tissue using Galectin-1 antibody (60223-1-Ig, Clone: 3G10D2) at dilution of 1:4000 and CoraLite®488-Conjugated AffiniPure Goat Anti-Mouse IgG(H+L). This data was developed using the same antibody clone with 60223-1-PBS in a different storage buffer formulation.



Immunohistochemical analysis of paraffin-embedded human colon cancer tissue slide using 60223-1-Ig (Galectin-1 antibody) at dilution of 1:4000 (under 40x lens). Heat mediated antigen retrieval with Tris-EDTA buffer (pH 9.0). This data was developed using the same antibody clone with 60223-1-PBS in a different storage buffer formulation.



Immunohistochemical analysis of paraffin-embedded human colon cancer tissue slide using 60223-1-Ig (Galectin-1 antibody) at dilution of 1:4000 (under 10x lens). Heat mediated antigen retrieval with Tris-EDTA buffer (pH 9.0). This data was developed using the same antibody clone with 60223-1-PBS in a different storage buffer formulation.



Immunofluorescent analysis of (-20°C Ethanol) fixed U2OS cells using Galectin-1 antibody (60223-1-Ig, Clone: 3G10D2) at dilution of 1:800 and CoraLite®488-Conjugated AffiniPure Goat Anti-Mouse IgG(H+L), CL594-Phalloidin (red). This data was developed using the same antibody clone with 60223-1-PBS in a different storage buffer formulation.