

For Research Use Only

# SMMHC Monoclonal antibody, PBS Only

Catalog Number:60222-1-PBS



## Basic Information

<b>Catalog Number:</b> 60222-1-PBS	<b>GenBank Accession Number:</b> BC101677	<b>Purification Method:</b> Protein A purification
<b>Size:</b> 100ug, Concentration: 1mg/ml by Nanodrop;	<b>GeneID (NCBI):</b> 4629	<b>CloneNo.:</b> 5C6D3
<b>Source:</b> Mouse	<b>UNIPROT ID:</b> P35749	
<b>Isotype:</b> IgG1	<b>Full Name:</b> myosin, heavy chain 11, smooth muscle	
<b>Immunogen Catalog Number:</b> AG13397	<b>Calculated MW:</b> 1938 aa, 224 kDa	
	<b>Observed MW:</b> 220 kDa	

## Applications

**Tested Applications:**  
WB, IHC, IF/ICC, ELISA

**Species Specificity:**  
human, mouse, rat, pig, rabbit

## Background Information

SMMHC (smooth muscle myosin heavy chain; MYH11) is a contractile protein of smooth muscle cells. It is specifically expressed in cells derived from smooth muscle lineages. SMMHC is used as vascular smooth muscle cell (vSMC) contractile marker. It is also an excellent marker for myoepithelial cells, with no or few cross-reaction with myofibroblasts, thus very useful in the evaluation of stromal invasion.

## Storage

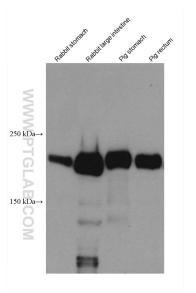
**Storage:**  
Store at -80°C.

**Storage Buffer:**  
PBS Only

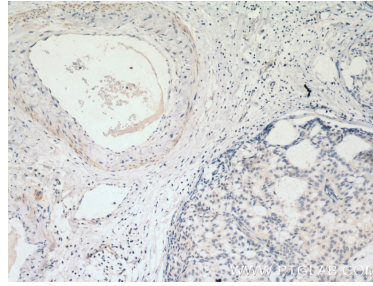
For technical support and original validation data for this product please contact:  
T: 1 (888) 4PTGLAB (1-888-478-4522) (toll free in USA), or 1(312) 455-8498 (outside USA)      E: proteintech@ptglab.com  
W: ptglab.com

**This product is exclusively available under Proteintech Group brand and is not available to purchase from any other manufacturer.**

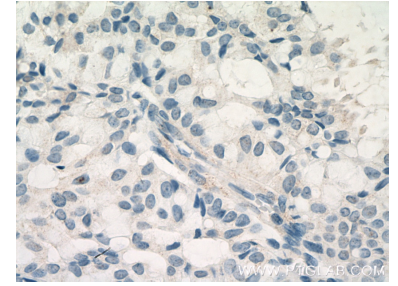
## Selected Validation Data



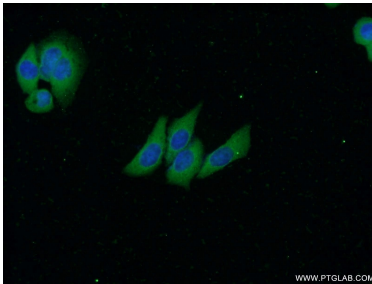
Various lysates were subjected to SDS PAGE followed by western blot with 60222-1-Ig (SMMHC antibody) at dilution of 1:5000 incubated at room temperature for 1.5 hours. This data was developed using the same antibody clone with 60222-1-PBS in a different storage buffer formulation.



Immunohistochemical analysis of paraffin-embedded human breast hyperplasia tissue slide using 60222-1-Ig (SMMHC antibody) at dilution of 1:1000 (under 10x lens). Heat mediated antigen retrieval with Tris-EDTA buffer (pH 9.0). This data was developed using the same antibody clone with 60222-1-PBS in a different storage buffer formulation.



Immunohistochemical analysis of paraffin-embedded human breast hyperplasia tissue slide using 60222-1-Ig (SMMHC antibody) at dilution of 1:1000 (under 40x lens). Heat mediated antigen retrieval with Tris-EDTA buffer (pH 9.0). This data was developed using the same antibody clone with 60222-1-PBS in a different storage buffer formulation.



Immunofluorescent analysis of HeLa cells using 60222-1-Ig (SMMHC antibody) at dilution of 1:50 and Alexa Fluor 488-conjugated AffiniPure Goat Anti-Mouse IgG (H+L). This data was developed using the same antibody clone with 60222-1-PBS in a different storage buffer formulation.



Immunohistochemical analysis of paraffin-embedded human colon tissue slide using 60222-1-Ig (SMMHC antibody) at dilution of 1:2000 (under 10x lens). Heat mediated antigen retrieval with Tris-EDTA buffer (pH 9.0). This data was developed using the same antibody clone with 60222-1-PBS in a different storage buffer formulation.