

For Research Use Only

CXCR7 Monoclonal antibody, PBS Only



Catalog Number: 60216-1-PBS

Basic Information

Catalog Number: 60216-1-PBS	GenBank Accession Number: BC036661	Purification Method: Protein A purification
Size: 100ug, Concentration: 1 mg/ml by Nanodrop;	GeneID (NCBI): 57007	CloneNo.: 4C3D7
Source: Mouse	UNIPROT ID: P25106	
Isotype: IgG2b	Full Name: chemokine (C-X-C motif) receptor 7	
Immunogen Catalog Number: AG14247	Calculated MW: 362 aa, 41 kDa	
	Observed MW: 50-60 kDa	

Applications

Tested Applications:
WB, IF, IHC, Indirect ELISA

Species Specificity:
human, mouse

Background Information

CXCR7 (C-X-C chemokine receptor type 7), also known as RDC1, is a member of the G-protein coupled receptor family. CXCR7 can bind the chemokines CXCL11 and CXCL12 with high affinity, and it also acts as a coreceptor with CXCR4 for a restricted number of HIV isolates. Expression of CXCR7 has been associated with cardiac development as well as with tumor growth and progression. This antibody recognizes endogenous CXCR7, which has an experimentally determined molecular weight of 50 kDa (PMID: 20197403; 20388803).

Storage

Storage:
Store at -80°C.

Storage Buffer:
PBS Only

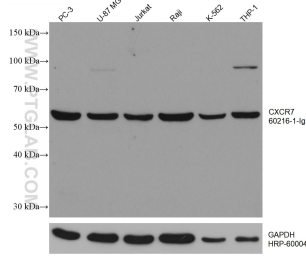
For technical support and original validation data for this product please contact:

T: 1 (888) 4PTGLAB (1-888-478-4522) (toll free in USA), or 1(312) 455-8498 (outside USA)

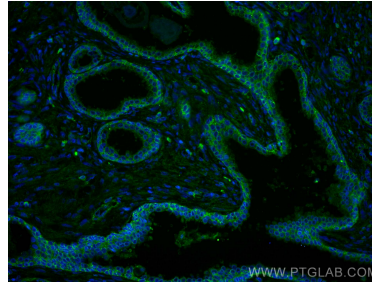
E: proteintech@ptglab.com
W: ptglab.com

This product is exclusively available under Proteintech Group brand and is not available to purchase from any other manufacturer.

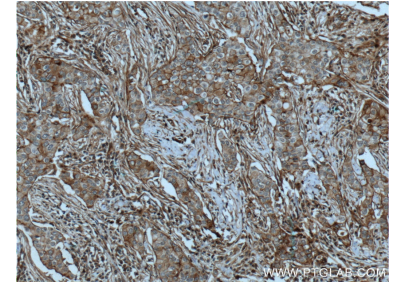
Selected Validation Data



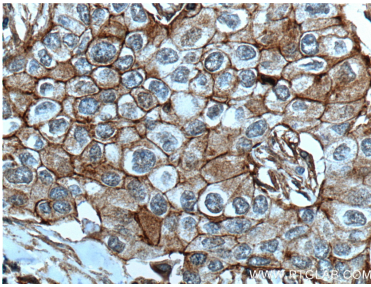
Various lysates were subjected to SDS PAGE followed by western blot with 60216-1-Ig (CXCR7 antibody) at dilution of 1:3000 incubated at room temperature for 1.5 hours. The membrane was stripped and reblotted with HRP-conjugated GAPDH Monoclonal antibody (HRP-60004) as loading control. This data was developed using the same antibody clone with 60216-1-PBS in a different storage buffer formulation.



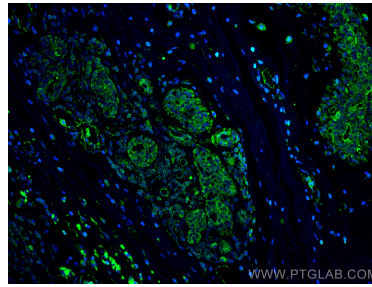
Immunofluorescent analysis of (4% PFA) fixed human prostate cancer tissue using CXCR7 antibody (60216-1-Ig, Clone: 4C3D7) at dilution of 1:200 and CoraLite®488-Conjugated AffiniPure Goat Anti-Mouse IgG(H+L). This data was developed using the same antibody clone with 60216-1-PBS in a different storage buffer formulation.



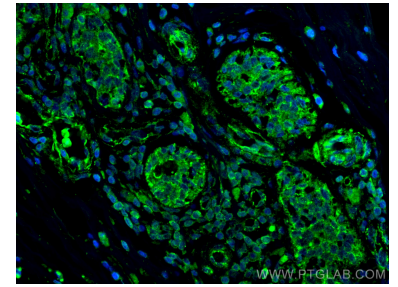
Immunohistochemical analysis of paraffin-embedded human breast cancer tissue slide using 60216-1-Ig (CXCR7 Antibody) at dilution of 1:200 (under 10x lens). Heat mediated antigen retrieval with Tris-EDTA buffer (pH 9.0). This data was developed using the same antibody clone with 60216-1-PBS in a different storage buffer formulation.



Immunohistochemical analysis of paraffin-embedded human breast cancer tissue slide using 60216-1-Ig (CXCR7 Antibody) at dilution of 1:200 (under 40x lens). Heat mediated antigen retrieval with Tris-EDTA buffer (pH 9.0). This data was developed using the same antibody clone with 60216-1-PBS in a different storage buffer formulation.



Immunofluorescent analysis of (4% PFA) fixed human breast cancer tissue using CXCR7 antibody (60216-1-Ig, Clone: 4C3D7) at dilution of 1:400 and CoraLite®488-Conjugated AffiniPure Goat Anti-Mouse IgG(H+L). This data was developed using the same antibody clone with 60216-1-PBS in a different storage buffer formulation.



Immunofluorescent analysis of (4% PFA) fixed human breast cancer tissue using CXCR7 antibody (60216-1-Ig, Clone: 4C3D7) at dilution of 1:400 and CoraLite®488-Conjugated AffiniPure Goat Anti-Mouse IgG(H+L). This data was developed using the same antibody clone with 60216-1-PBS in a different storage buffer formulation.