

For Research Use Only

transgelin/SM22 Monoclonal antibody

Catalog Number: 60213-1-Ig **19 Publications**



Basic Information

Catalog Number: 60213-1-Ig	GenBank Accession Number: BC004927	Purification Method: Protein A purification
Size: 150ul , Concentration: 700 ug/ml by Bradford method using BSA as the standard;	GeneID (NCBI): 6876	CloneNo.: 2A10C2
Source: Mouse	UNIPROT ID: Q01995	Recommended Dilutions: WB 1:5000-1:50000 IHC 1:50-1:400 IF-P 1:500-1:2000
Isotype: IgG1	Full Name: transgelin	
Immunogen Catalog Number: AG0764	Calculated MW: 22 kDa	
	Observed MW: 18+22 kDa	

Applications

Tested Applications:

WB, IHC, IF-P, ELISA

Cited Applications:

WB, IF

Species Specificity:

human, rat, pig, mouse, mouse

Cited Species:

human, mouse, rat

Note-IHC: suggested antigen retrieval with TE buffer pH 9.0; (*) Alternatively, antigen retrieval may be performed with citrate buffer pH 6.0

Positive Controls:

WB : pig colon tissue, human colon tissue, pig stomach tissue, human stomach tissue, rat colon tissue, rat stomach tissue, rabbit stomach tissue, mouse colon tissue

IHC : human colon tissue, human heart tissue

IF-P : mouse heart tissue,

Background Information

The transgelin family is a group of proteins that belong to 22 kDa actin-related corpnin superfamily. Of all three isoforms, transgelin 1 is the best characterized. Transgelin 1, also known as SM22 alpha, is a specific marker for differentiated smooth muscle cells. Transgelin 2, also known as SM22 beta, is expressed by both smooth muscle and non-smooth muscle cells in a temporally and spatially regulated pattern. Transgelin 3, also known as NP25, is only found in highly differentiated neuronal cells.

Notable Publications

Author	Pubmed ID	Journal	Application
Ji-Ting Liu	34604241	Front Cell Dev Biol	WB
Sarah Lang	29152087	Oncotarget	WB
Lin Liu	36309970	Clin Exp Pharmacol Physiol	WB

Storage

Storage:

Store at -20°C. Stable for one year after shipment.

Storage Buffer:

PBS with 0.02% sodium azide and 50% glycerol pH 7.3.

Aliquoting is unnecessary for -20°C storage

***** 20ul sizes contain 0.1%BSA**

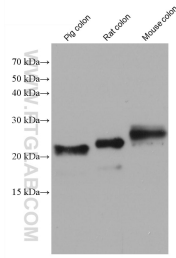
For technical support and original validation data for this product please contact:

T: 1 (888) 4PTGLAB (1-888-478-4522) (toll free in USA), or 1(312) 455-8498 (outside USA)

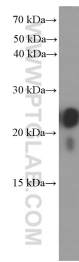
E: proteintech@ptglab.com
W: ptglab.com

This product is exclusively available under Proteintech Group brand and is not available to purchase from any other manufacturer.

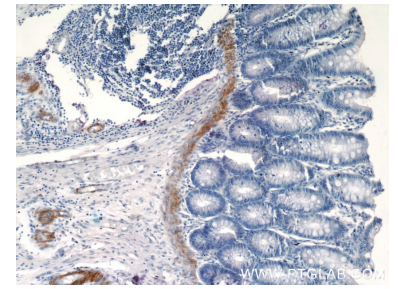
Selected Validation Data



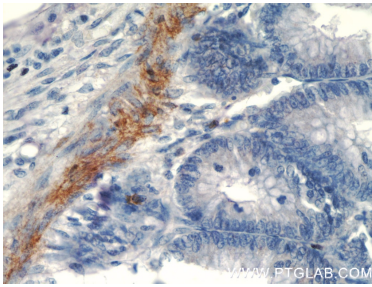
Various lysates were subjected to SDS PAGE followed by western blot with 60213-1-Ig (transgelin/SM22 antibody) at dilution of 1:20000 incubated at room temperature for 1.5 hours.



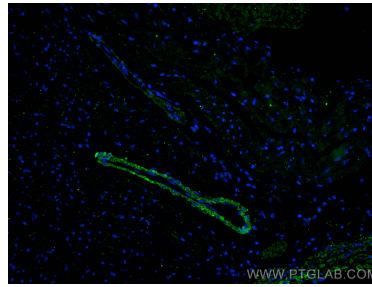
human colon tissue were subjected to SDS PAGE followed by western blot with 60213-1-Ig (transgelin/SM22 antibody at dilution of 1:4000 incubated at room temperature for 1.5 hours.



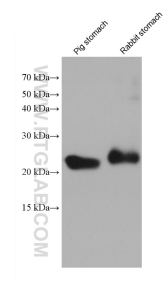
Immunohistochemical analysis of paraffin-embedded human colon tissue slide using 60213-1-Ig (transgelin/SM22 antibody at dilution of 1:200 (under 10x lens).



Immunohistochemical analysis of paraffin-embedded human colon tissue slide using 60213-1-Ig (transgelin/SM22 antibody at dilution of 1:200 (under 40x lens).



Immunofluorescent analysis of (4% PFA) fixed paraffin-embedded mouse heart tissue using transgelin/SM22 antibody (60213-1-Ig, Clone: 2A10C2) at dilution of 1:1000 and CoraLite®488-Conjugated Goat Anti-Mouse IgG(H+L). Heat mediated antigen retrieval with Tris-EDTA buffer (pH 9.0).



Various lysates were subjected to SDS PAGE followed by western blot with 60213-1-Ig (transgelin/SM22 antibody) at dilution of 1:20000 incubated at room temperature for 1.5 hours.