

NF-L Monoclonal antibody

Catalog Number: 60189-1-Ig **1 Publications**

Basic Information

Catalog Number: 60189-1-Ig	GenBank Accession Number: BC039237	Purification Method: Protein A purification
Size: 150ul , Concentration: 1435 µg/ml by Nanodrop;	GeneID (NCBI): 4747	CloneNo.: 5C12G4
Source: Mouse	UNIPROT ID: P07196	Recommended Dilutions: WB 1:20000-1:100000 IHC 1:250-1:1000 IF 1:50-1:500
Isotype: IgG1	Full Name: neurofilament, light polypeptide	
Immunogen Catalog Number: AG15178	Calculated MW: 543 aa, 62 kDa	
	Observed MW: 65 kDa	

Applications

Tested Applications: FC, IF, IHC, WB, ELISA	Positive Controls:
Cited Applications: IF	WB : PC-12 cells, human brain tissue, pig brain tissue, rat brain tissue, mouse brain tissue
Species Specificity: human, mouse, rat, pig	IHC : rat brain tissue, human brain tissue, mouse brain tissue
Cited Species: mouse	IF : mouse brain tissue, rat brain tissue
Note-IHC: suggested antigen retrieval with TE buffer pH 9.0; (*) Alternatively, antigen retrieval may be performed with citrate buffer pH 6.0	

Background Information

NEFL, also named as NF68 and NF-L, belongs to the intermediate filament family. Neurofilaments are the 10 nm intermediate filaments found specifically in neurons. They are a major component of the cell's cytoskeleton, and provide support for normal axonal radial growth. Neurofilaments usually contain three intermediate filament proteins: L, M, and H, which are involved in the maintenance of neuronal caliber. The names given to the three major neurofilament subunits are based upon the apparent molecular weight of the mammalian subunits on SDS-PAGE: NF-L, 65-68 kDa; NF-M, 145-160 kDa and NF-H, 200-220 kDa. This antibody is specific to NEFL.

Notable Publications

Author	Pubmed ID	Journal	Application
Jing Wang	38262412	Cell Rep Med	IF

Storage

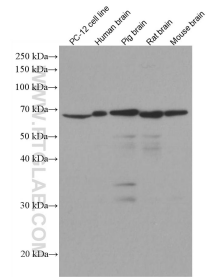
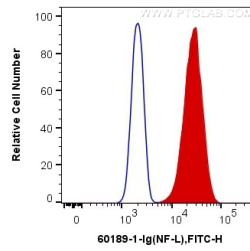
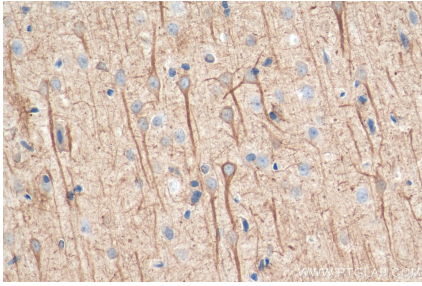
Storage:
Store at -20°C. Stable for one year after shipment.
Storage Buffer:
PBS with 0.02% sodium azide and 50% glycerol pH 7.3.
Aliquoting is unnecessary for -20°C storage

*** 20ul sizes contain 0.1% BSA

For technical support and original validation data for this product please contact:
T: 1 (888) 4PTGLAB (1-888-478-4522) (toll free in USA), or 1(312) 455-8498 (outside USA)
E: proteintech@ptglab.com
W: ptglab.com

This product is exclusively available under Proteintech Group brand and is not available to purchase from any other manufacturer.

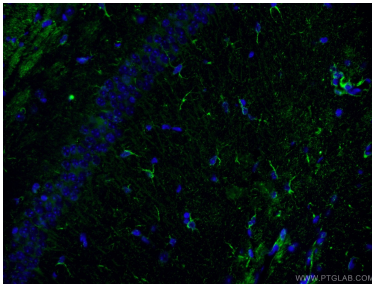
Selected Validation Data



Immunohistochemical analysis of paraffin-embedded rat brain tissue slide using 60189-1-Ig (NF-L antibody) at dilution of 1:500 (under 40x lens). Heat mediated antigen retrieval with Tris-EDTA buffer (pH 9.0).

1×10^6 PC-12 cells were intracellularly stained with 0.4 μ g Anti-Human NF-L (60189-1-Ig, Clone:5C12G4) and Coralite®488-Conjugated AffiniPure Goat Anti-Mouse IgG(H+L) at dilution 1:1000 (red), or 0.4 μ g Control Antibody. Cells were fixed with 4% PFA and permeabilized with Flow Cytometry Perm Buffer (PF00011-C).

Various lysates were subjected to SDS PAGE followed by western blot with 60189-1-Ig (NF-L antibody) at dilution of 1:100000 incubated at room temperature for 1.5 hours.



Immunofluorescent analysis of (4% PFA) fixed mouse brain tissue using 60189-1-Ig (NF-L antibody) at dilution of 1:50 and Alexa Fluor 488-conjugated AffiniPure Goat Anti-Mouse IgG(H+L).