

For Research Use Only

# ACPP Monoclonal antibody, PBS Only



Catalog Number: 60176-1-PBS

## Basic Information

<b>Catalog Number:</b> 60176-1-PBS	<b>GenBank Accession Number:</b> BC007460	<b>Purification Method:</b> Protein A purification
<b>Size:</b> 100ug , Concentration: 1mg/ml by Nanodrop;	<b>GeneID (NCBI):</b> 55	<b>CloneNo.:</b> 1G2C9
<b>Source:</b> Mouse	<b>UNIPROT ID:</b> P15309	
<b>Isotype:</b> IgG2a	<b>Full Name:</b> acid phosphatase, prostate	
<b>Immunogen Catalog Number:</b> AG8578	<b>Calculated MW:</b> 418 aa, 48 kDa	
	<b>Observed MW:</b> 45-50 kDa	

## Applications

**Tested Applications:**  
WB, IF, IHC, Indirect ELISA

**Species Specificity:**  
human, rat

## Background Information

ACPP is also named as PAP(prostatic acid phosphatase),5'-nucleotidase,thiamine monophosphatas and Belongs to the histidine acid phosphatase family.This enzyme is a homodimeric glycoprotein with a subunit molecular mass of 50 kDa and is an androgen-stimulated secretory product of the human prostate gland(PMID:8132635).It is also a non-specific phosphatase and has been implicated in the progression of prostate cancer, which inactivates LPA in human seminal plasma(PMID:15280042). This protein has three glycosylation sites(PMID:10639192;12525165).

## Storage

**Storage:**  
Store at -80°C.  
**Storage Buffer:**  
PBS Only

For technical support and original validation data for this product please contact:

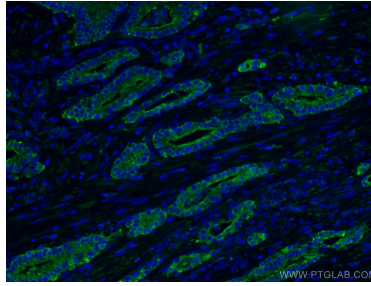
T: 1 (888) 4PTGLAB (1-888-478-4522) (toll free in USA), or 1(312) 455-8498 (outside USA)

E: [proteintech@ptglab.com](mailto:proteintech@ptglab.com)  
W: [ptglab.com](http://ptglab.com)

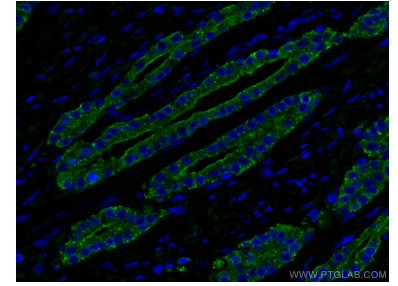
**This product is exclusively available under Proteintech Group brand and is not available to purchase from any other manufacturer.**

## Selected Validation Data

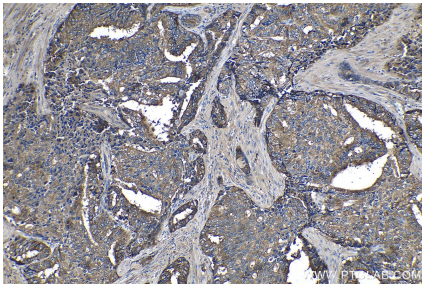
K-562 cells were subjected to SDS PAGE followed by western blot with 60176-1-Ig (ACPP Antibody) at dilution of 1:3000 incubated at room temperature for 1.5 hours. This data was developed using the same antibody clone with 60176-1-PBS in a different storage buffer formulation.



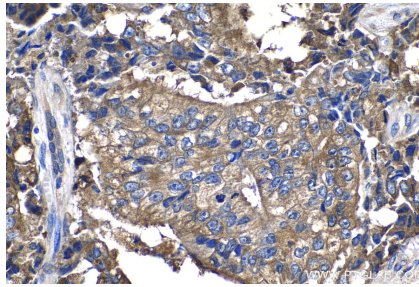
Immunofluorescent analysis of (4% PFA) fixed human prostate cancer tissue using ACPP antibody (60176-1-Ig, Clone: 1G2C9) at dilution of 1:400 and CoraLite®488-Conjugated AffiniPure Goat Anti-Mouse IgG(H+L). This data was developed using the same antibody clone with 60176-1-PBS in a different storage buffer formulation.



Immunofluorescent analysis of (4% PFA) fixed human prostate cancer tissue using ACPP antibody (60176-1-Ig, Clone: 1G2C9) at dilution of 1:400 and CoraLite®488-Conjugated AffiniPure Goat Anti-Mouse IgG(H+L). This data was developed using the same antibody clone with 60176-1-PBS in a different storage buffer formulation.



Immunohistochemical analysis of paraffin-embedded human prostate hyperplasia tissue slide using 60176-1-Ig (ACPP antibody) at dilution of 1:1000 (under 10x lens). This data was developed using the same antibody clone with 60176-1-PBS in a different storage buffer formulation.



Immunohistochemical analysis of paraffin-embedded human prostate hyperplasia tissue slide using 60176-1-Ig (ACPP antibody) at dilution of 1:1000 (under 40x lens). This data was developed using the same antibody clone with 60176-1-PBS in a different storage buffer formulation.