

For Research Use Only

ACPP Monoclonal antibody

Catalog Number: 60176-1-Ig **1 Publications**



Basic Information

Catalog Number: 60176-1-Ig	GenBank Accession Number: BC007460	Purification Method: Protein A purification
Size: 150ul , Concentration: 1600 ug/ml by 55 Nanodrop and 1000 ug/ml by Bradford method using BSA as the standard;	GeneID (NCBI): P15309	CloneNo.: 1G2C9
Source: Mouse	UNIPROT ID: P15309	Recommended Dilutions: WB: 1:1000-1:6000 IHC: 1:500-1:2000 IF-P: 1:200-1:800
Isotype: IgG2a	Full Name: acid phosphatase, prostate	
Immunogen Catalog Number: AG8578	Calculated MW: 418 aa, 48 kDa	
	Observed MW: 45-50 kDa	

Applications

Tested Applications: WB, IHC, IF-P, ELISA	Positive Controls: WB : K-562 cells, human testis tissue IHC : human prostate hyperplasia tissue, IF-P : human prostate cancer tissue,
Cited Applications: WB	
Species Specificity: human, rat	
Cited Species: human	
Note-IHC: suggested antigen retrieval with TE buffer pH 9.0; (*) Alternatively, antigen retrieval may be performed with citrate buffer pH 6.0	

Background Information

ACPP is also named as PAP(prostatic acid phosphatase),5'-nucleotidase,thiamine monophosphatas and Belongs to the histidine acid phosphatase family.This enzyme is a homodimeric glycoprotein with a subunit molecular mass of 50 kDa and is an androgen-stimulated secretory product of the human prostate gland(PMID:8132635).It is also a non-specific phosphatase and has been implicated in the progression of prostate cancer, which inactivates LPA in human seminal plasma(PMID:15280042). This protein has three glycosylation sites(PMID:10639192;12525165).

Notable Publications

Author	Pubmed ID	Journal	Application
Chong Wang	35185790	Front Endocrinol (Lausanne)	WB

Storage

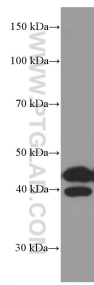
Storage:
Store at -20°C. Stable for one year after shipment.
Storage Buffer:
PBS with 0.02% sodium azide and 50% glycerol, pH7.3
Aliquoting is unnecessary for -20°C storage

*** 20ul sizes contain 0.1% BSA

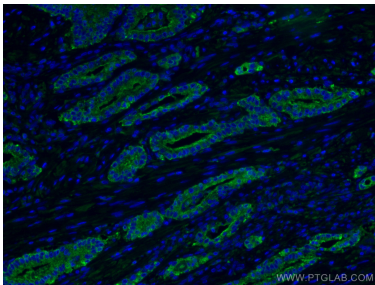
For technical support and original validation data for this product please contact:
T: 1 (888) 4PTGLAB (1-888-478-4522) (toll free in USA), or 1(312) 455-8498 (outside USA)
E: proteintech@ptglab.com
W: ptglab.com

This product is exclusively available under Proteintech Group brand and is not available to purchase from any other manufacturer.

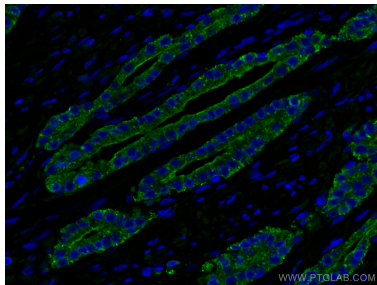
Selected Validation Data



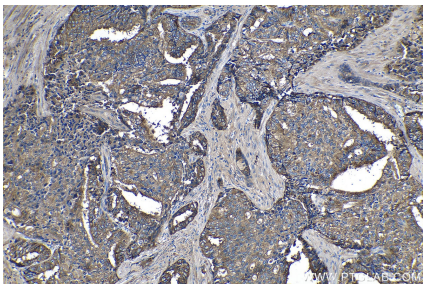
K-562 cells were subjected to SDS PAGE followed by western blot with 60176-1-Ig (ACPP Antibody) at dilution of 1:3000 incubated at room temperature for 1.5 hours.



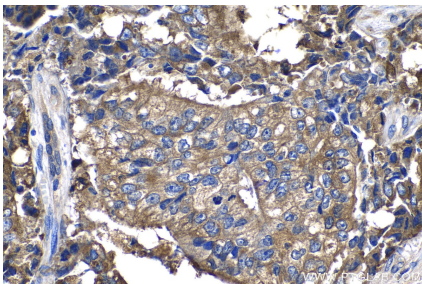
Immunofluorescent analysis of (4% PFA) fixed human prostate cancer tissue using ACPP antibody (60176-1-Ig, Clone: 1G2C9) at dilution of 1:400 and CoraLite®488-Conjugated AffiniPure Goat Anti-Mouse IgG(H+L).



Immunofluorescent analysis of (4% PFA) fixed human prostate cancer tissue using ACPP antibody (60176-1-Ig, Clone: 1G2C9) at dilution of 1:400 and CoraLite®488-Conjugated AffiniPure Goat Anti-Mouse IgG(H+L).



Immunohistochemical analysis of paraffin-embedded human prostate hyperplasia tissue slide using 60176-1-Ig (ACPP antibody) at dilution of 1:1000 (under 10x lens).



Immunohistochemical analysis of paraffin-embedded human prostate hyperplasia tissue slide using 60176-1-Ig (ACPP antibody) at dilution of 1:1000 (under 40x lens).