

For Research Use Only

# CD122/IL-2RB Monoclonal antibody, PBS Only (Capture)

Catalog Number: 60174-2-PBS



## Basic Information

<b>Catalog Number:</b> 60174-2-PBS	<b>GenBank Accession Number:</b> BC025691	<b>Purification Method:</b> Protein A purification
<b>Size:</b> 100ug , Concentration: 1 mg/ml by Nanodrop;	<b>GeneID (NCBI):</b> 3560	<b>CloneNo.:</b> 5G1E6
<b>Source:</b> Mouse	<b>ENSEMBL Gene ID:</b> ENSG00000100385	
<b>Isotype:</b> IgG2a	<b>UNIPROT ID:</b> P14784	
<b>Immunogen Catalog Number:</b> AG3929	<b>Full Name:</b> interleukin 2 receptor, beta	
	<b>Calculated MW:</b> 551 aa, 61 kDa	

## Applications

**Tested Applications:**  
WB, Cytometric bead array, Indirect ELISA

**Species Specificity:**  
human

## Product Information

60174-2-PBS targets CD122/IL-2RB as part of a matched antibody pair:

MP50451-2: 60174-2-PBS capture and 60174-1-PBS detection (validated in Cytometric bead array)

MP50451-3: 60174-2-PBS capture and 60174-3-PBS detection (validated in Cytometric bead array)

Unconjugated mouse monoclonal antibody pair in PBS only (BSA and azide free) storage buffer at a concentration of 1 mg/mL, ready for conjugation.

This conjugation ready format makes antibodies ideal for use in many applications including: ELISAs, multiplex assays requiring matched pairs, mass cytometry, and multiplex imaging applications. Antibody use should be optimized by the end user for each application and assay.

## Storage

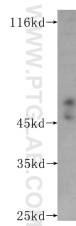
**Storage:**  
Store at -80°C.

**Storage Buffer:**  
PBS Only

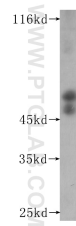
For technical support and original validation data for this product please contact:  
T: 1 (888) 4PTGLAB (1-888-478-4522) (toll free in USA), or 1(312) 455-8498 (outside USA)      E: [proteintech@ptglab.com](mailto:proteintech@ptglab.com)  
W: [ptglab.com](http://ptglab.com)

**This product is exclusively available under Proteintech Group brand and is not available to purchase from any other manufacturer.**

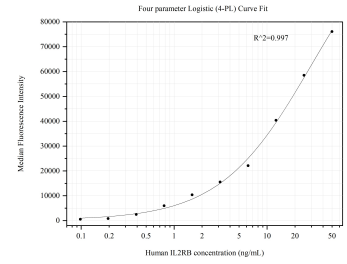
## Selected Validation Data



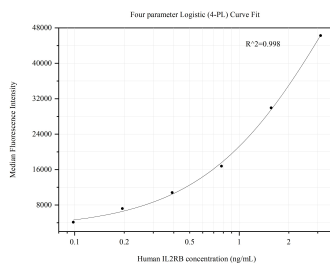
Recombinant protein were subjected to SDS PAGE followed by western blot with 60174-2-Ig (IL2RB antibody) at dilution of 1:600 incubated at room temperature for 1.5 hours. This data was developed using the same antibody clone with 60174-2-PBS in a different storage buffer formulation.



Recombinant protein were subjected to SDS PAGE followed by western blot with 60174-2-Ig (IL2RB antibody) at dilution of 1:600 incubated at room temperature for 1.5 hours. This data was developed using the same antibody clone with 60174-2-PBS in a different storage buffer formulation.



Cytometric bead array standard curve of MP50451-2, CD122/IL2RB Monoclonal Matched Antibody Pair, PBS Only. Capture antibody: 60174-2-PBS. Detection antibody: 60174-1-PBS. Standard: Ag3929. Range: 0.098-50 ng/mL



Cytometric bead array standard curve of MP50451-3, CD122/IL2RB Monoclonal Matched Antibody Pair, PBS Only. Capture antibody: 60174-2-PBS. Detection antibody: 60174-3-PBS. Standard: Ag3929. Range: 0.098-3.125 ng/mL