

For Research Use Only

MSH2 Monoclonal antibody, PBS Only (Capture)

Catalog Number: 60161-1-PBS

Featured Product



Basic Information

Catalog Number:

60161-1-PBS

Size:

100ug, Concentration: 1mg/ml by Nanodrop;

Source:

Mouse

Isotype:

IgG1

Immunogen Catalog Number:

AG7835

GenBank Accession Number:

BC021566

GeneID (NCBI):

4436

UNIPROT ID:

P43246

Full Name:

mutS homolog 2, colon cancer, nonpolyposis type 1 (E. coli)

Calculated MW:

105 kDa

Observed MW:

105 kDa

Purification Method:

Protein A purification

CloneNo.:

2H5F5

Applications

Tested Applications:

WB, IHC, Cytometric bead array, Indirect ELISA

Species Specificity:

human

Product Information

60161-1-PBS targets MSH2 as part of a matched antibody pair:

MP50235-1: 60161-1-PBS capture and 60161-2-PBS detection (validated in Cytometric bead array)

Unconjugated mouse monoclonal antibody pair in PBS only (BSA and azide free) storage buffer at a concentration of 1 mg/mL, ready for conjugation.

This conjugation ready format makes antibodies ideal for use in many applications including: ELISAs, multiplex assays requiring matched pairs, mass cytometry, and multiplex imaging applications. Antibody use should be optimized by the end user for each application and assay.

Background Information

MSH2, named for its homologous to the E.coli MutS gene, takes part in DNA mismatch repair (MMR) to maintain the stability of DNA. MSH2 contains a helix-turn-helix domain, which responds for binding to DNA. Also, MSH2 has a direct role in mutation avoidance and micro-satellite stability in cell.

Storage

Storage:

Store at -80°C.

Storage Buffer:

PBS Only

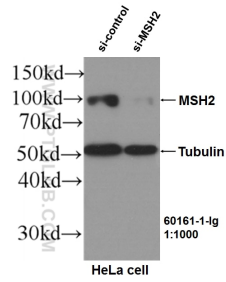
For technical support and original validation data for this product please contact:

T: 1 (888) 4PTGLAB (1-888-478-4522) (toll free in USA), or 1(312) 455-8498 (outside USA)

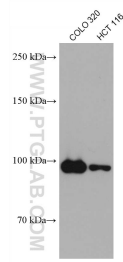
E: proteintech@ptglab.com
W: ptglab.com

This product is exclusively available under Proteintech Group brand and is not available to purchase from any other manufacturer.

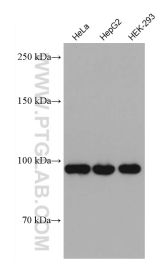
Selected Validation Data



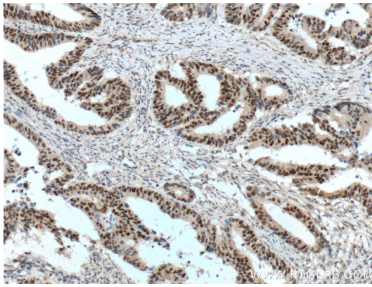
WB results of MSH2 (60161-1-Ig, 1:1000) antibody with si-Control and si-MSH2 transfected HeLa cells.. This data was developed using the same antibody clone with 60161-1-PBS in a different storage buffer formulation.



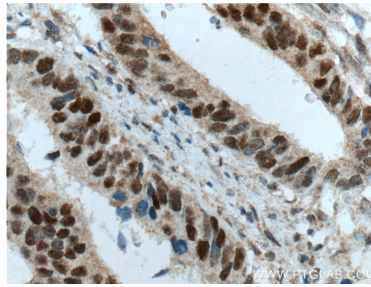
Various lysates were subjected to SDS PAGE followed by western blot with 60161-1-Ig (MSH2 antibody) at dilution of 1:10000 incubated at room temperature for 1.5 hours. This data was developed using the same antibody clone with 60161-1-PBS in a different storage buffer formulation.



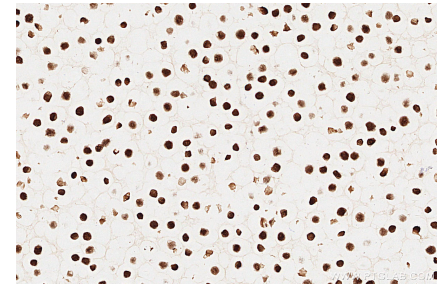
Various lysates were subjected to SDS PAGE followed by western blot with 60161-1-Ig (MSH2 antibody) at dilution of 1:10000 incubated at room temperature for 1.5 hours. This data was developed using the same antibody clone with 60161-1-PBS in a different storage buffer formulation.



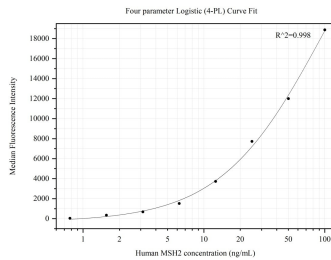
Immunohistochemical analysis of paraffin-embedded human colon cancer tissue slide using 60161-1-Ig (MSH2 Antibody) at dilution of 1:800 (under 10x lens). Heat mediated antigen retrieval with Tris-EDTA buffer (pH 9.0). This data was developed using the same antibody clone with 60161-1-PBS in a different storage buffer formulation.



Immunohistochemical analysis of paraffin-embedded human colon cancer tissue slide using 60161-1-Ig (MSH2 Antibody) at dilution of 1:800 (under 40x lens). Heat mediated antigen retrieval with Tris-EDTA buffer (pH 9.0). This data was developed using the same antibody clone with 60161-1-PBS in a different storage buffer formulation.



Immunohistochemical analysis of paraffin-embedded Ramos cells slide using 60161-1-Ig (MSH2 antibody) at dilution of 1:1000 (under 40x lens). Heat mediated antigen retrieval with Tris-EDTA buffer (pH 9.0). This data was developed using the same antibody clone with 60161-1-PBS in a different storage buffer formulation.



Cytometric bead array standard curve of MP50235-1, MSH2 Monoclonal Matched Antibody Pair, PBS Only. Capture antibody: 60161-1-PBS. Detection antibody: 60161-2-PBS. Standard: Ag7835. Range: 0.781-100 ng/mL.