

For Research Use Only

SMN (Human,Mouse,Rat) Monoclonal antibody, PBS Only

Catalog Number:60154-2-PBS

Featured Product



Basic Information

Catalog Number: 60154-2-PBS	GenBank Accession Number: BC000908	Purification Method: Protein A purification
Size: 100ug, Concentration: 1mg/ml by Nanodrop;	GeneID (NCBI): 6607	CloneNo.: 3C10B5
Source: Mouse	UNIPROT ID: Q16637	
Isotype: IgG2b	Full Name: survival of motor neuron 2, centromeric	
Immunogen Catalog Number: AG14333	Calculated MW: 282 aa, 30 kDa	
	Observed MW: 38 kDa	

Applications

Tested Applications:
WB, IHC, IF/ICC, FC (Intra), Indirect ELISA

Species Specificity:
human, mouse, rat

Background Information

The survival of motor neurons (SMN) genes are the disease genes of spinal muscular atrophy (SMA), a common motor neuron degenerative disease. The level of SMN protein correlates with phenotypic severity of SMA. SMA patients lack a functional SMN1 gene, but they possess an intact SMN2 gene, which though nearly identical to SMN1, is only partially functional, because a large majority of SMN2 transcripts lack exon 7, resulting in production of a truncated, less stable SMN protein. This antibody 60154-2-Ig can recognize human, mouse and rat SMN gene.

Storage

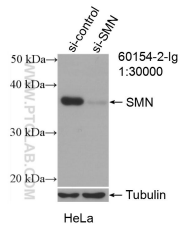
Storage:
Store at -80°C.

Storage Buffer:
PBS Only

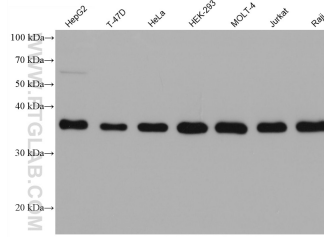
For technical support and original validation data for this product please contact:
T: 1 (888) 4PTGLAB (1-888-478-4522) (toll free in USA), or 1(312) 455-8498 (outside USA) E: proteintech@ptglab.com
W: ptglab.com

This product is exclusively available under Proteintech Group brand and is not available to purchase from any other manufacturer.

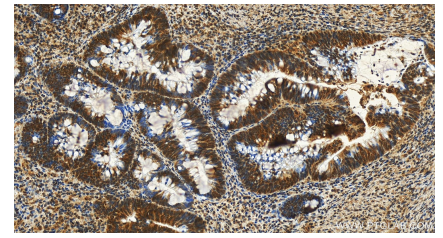
Selected Validation Data



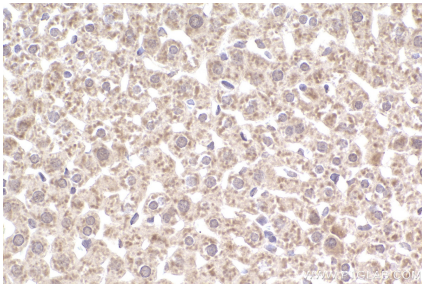
WB result of SMN (Human,Mouse,Rat) antibody (60154-2-Ig; 1:30000; incubated at room temperature for 1.5 hours) with sh-Control and sh-SMN (Human,Mouse,Rat) transfected HeLa cells. This data was developed using the same antibody clone with 60154-2-PBS in a different storage buffer formulation.



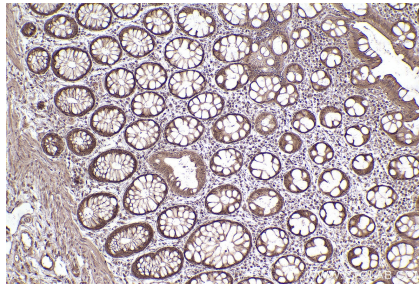
Various lysates were subjected to SDS PAGE followed by western blot with 60154-2-Ig (SMN (Human,Mouse,Rat) antibody) at dilution of 1:10000 incubated at room temperature for 1.5 hours. This data was developed using the same antibody clone with 60154-2-PBS in a different storage buffer formulation.



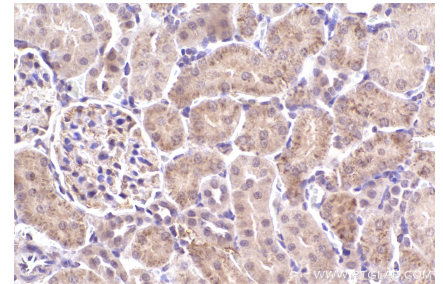
Immunohistochemical analysis of paraffin-embedded human colon cancer slide using 60154-2-Ig (SMN (Human,Mouse,Rat) antibody) at dilution of 1:400 (under 20x lens). Heat mediated antigen retrieval with Tris-EDTA buffer (pH 9.0). This data was developed using the same antibody clone with 60154-2-PBS in a different storage buffer formulation.



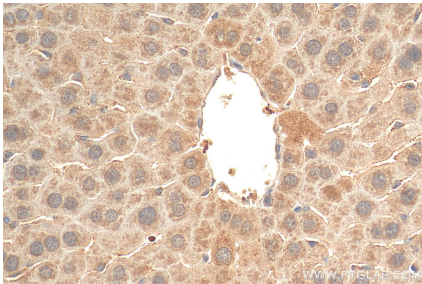
Immunohistochemical analysis of paraffin-embedded rat liver tissue slide using 60154-2-Ig (SMN (Human,Mouse,Rat) antibody) at dilution of 1:500 (under 40x lens). Heat mediated antigen retrieval with Tris-EDTA buffer (pH 9.0). This data was developed using the same antibody clone with 60154-2-PBS in a different storage buffer formulation.



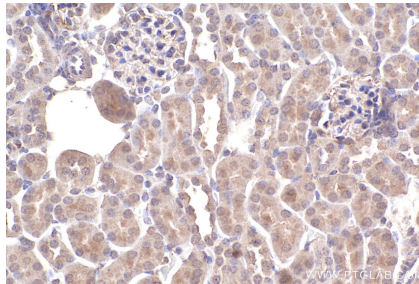
Immunohistochemical analysis of paraffin-embedded human rectal cancer tissue slide using 60154-2-Ig (SMN (Human,Mouse,Rat) antibody) at dilution of 1:500 (under 10x lens). Heat mediated antigen retrieval with Tris-EDTA buffer (pH 9.0). This data was developed using the same antibody clone with 60154-2-PBS in a different storage buffer formulation.



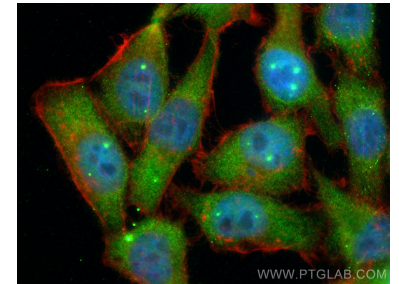
Immunohistochemical analysis of paraffin-embedded rat kidney tissue slide using 60154-2-Ig (SMN (Human,Mouse,Rat) antibody) at dilution of 1:500 (under 40x lens). Heat mediated antigen retrieval with Tris-EDTA buffer (pH 9.0). This data was developed using the same antibody clone with 60154-2-PBS in a different storage buffer formulation.



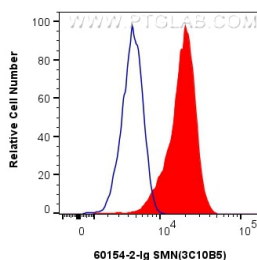
Immunohistochemical analysis of paraffin-embedded mouse liver tissue slide using 60154-2-Ig (SMN (Human,Mouse,Rat) antibody) at dilution of 1:1000 (under 40x lens). Heat mediated antigen retrieval with Tris-EDTA buffer (pH 9.0). This data was developed using the same antibody clone with 60154-2-PBS in a different storage buffer formulation.



Immunohistochemical analysis of paraffin-embedded mouse kidney tissue slide using 60154-2-Ig (SMN (Human,Mouse,Rat) antibody) at dilution of 1:1000 (under 40x lens). Heat mediated antigen retrieval with Tris-EDTA buffer (pH 9.0). This data was developed using the same antibody clone with 60154-2-PBS in a different storage buffer formulation.



Immunofluorescent analysis of (4% PFA) fixed HepG2 cells using SMN (Human,Mouse,Rat) antibody (60154-2-Ig, Clone: 3C10B5) at dilution of 1:800 and Coralite@488-Conjugated AffiniPure Goat Anti-Mouse IgG(H+L), CL594-Phalloidin (red). This data was developed using the same antibody clone with 60154-2-PBS in a different storage buffer formulation.



1x10⁶ Jurkat cells were intracellularly stained with 0.25 ug SMN (Human, Mouse, Rat) Monoclonal antibody (60154-2-Ig, Clone: 3C10B5) and CoraLite®488-Conjugated Goat Anti-Mouse IgG(H+L) (SA00013-1)(red), or 0.25 ug Mouse IgG2b isotype control Mouse McAb (66360-3-Ig, Clone: 11B8C4) (blue). Cells were fixed with 4% PFA and permeabilized with Flow Cytometry Perm Buffer (PF00011-C). This data was developed using the same antibody clone with 60154-2-

