

For Research Use Only

Chromogranin A Monoclonal antibody, PBS Only (Capture/Detector)

Catalog Number: 60135-2-PBS



Basic Information

Catalog Number: 60135-2-PBS	GenBank Accession Number: BC006459	Purification Method: Protein A purification
Size: 100ug, Concentration: 1mg/ml by Nanodrop;	GeneID (NCBI): 1113	CloneNo.: 2A7D11
Source: Mouse	UNIPROT ID: P10645	
Isotype: IgG1	Full Name: chromogranin A (parathyroid secretory protein 1)	
Immunogen Catalog Number: AG0807	Calculated MW: 51 kDa	
	Observed MW: 50 kDa	

Applications

Tested Applications:
WB, IHC, IF/ICC, IF-P, Cytometric bead array, Indirect
ELISA

Species Specificity:
human, mouse, rat, pig

Product Information

60135-2-PBS targets Chromogranin A as part of a matched antibody pair:

MP50241-2: 60135-2-PBS capture and 60135-3-PBS detection (validated in Cytometric bead array)

MP50241-3: 68851-1-PBS capture and 60135-2-PBS detection (validated in Cytometric bead array)

Unconjugated mouse monoclonal antibody pair in PBS only (BSA and azide free) storage buffer at a concentration of 1 mg/mL, ready for conjugation.

This conjugation ready format makes antibodies ideal for use in many applications including: ELISAs, multiplex assays requiring matched pairs, mass cytometry, and multiplex imaging applications. Antibody use should be optimized by the end user for each application and assay.

Background Information

Chromogranin A is a member of the granin family of neuroendocrine secretory proteins. It is located in secretory vesicles of neurons and endocrine cells. Chromogranin A is the precursor to several functional peptides including vasostatin, pancreastatin, catestatin and parastatin. These peptides negatively modulate the neuroendocrine function of the releasing cell (autocrine) or nearby cells (paracrine). CgA is one of the most used tumor markers in NET's (neuroendocrine tumors), and elevated CgA concentrations have been demonstrated in serum or plasma of patients with different types of these tumors.

Storage

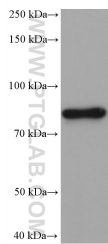
Storage:
Store at -80°C.

Storage Buffer:
PBS Only

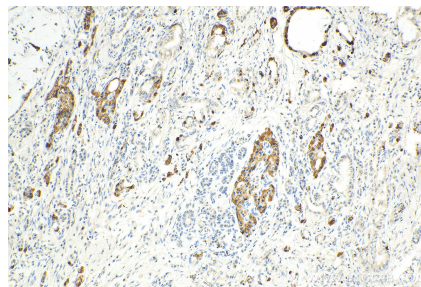
For technical support and original validation data for this product please contact:
T: 1 (888) 4PTGLAB (1-888-478-4522) (toll free in USA), or 1(312) 455-8498 (outside USA)
E: proteintech@ptglab.com
W: ptglab.com

This product is exclusively available under Proteintech Group brand and is not available to purchase from any other manufacturer.

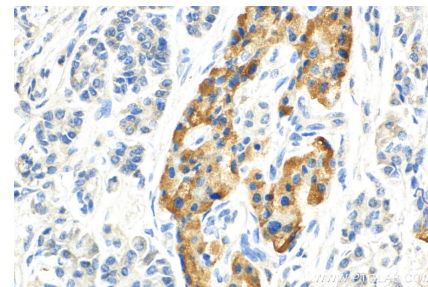
Selected Validation Data



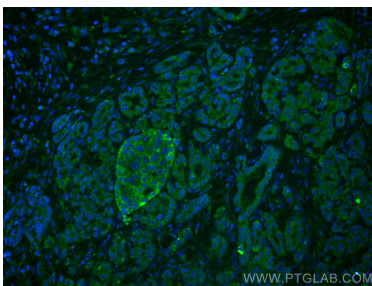
rat adrenal gland tissue were subjected to SDS PAGE followed by western blot with 60135-2-Ig (Chromogranin A antibody) at dilution of 1:5000 incubated at room temperature for 1.5 hours. This data was developed using the same antibody clone with 60135-2-PBS in a different storage buffer formulation.



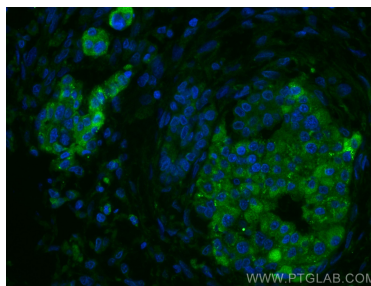
Immunohistochemical analysis of paraffin-embedded human pancreas cancer tissue slide using 60135-2-Ig (CHGA antibody) at dilution of 1:2000 (under 10x lens). Heat mediated antigen retrieval with Tris-EDTA buffer (pH 9.0). This data was developed using the same antibody clone with 60135-2-PBS in a different storage buffer formulation.



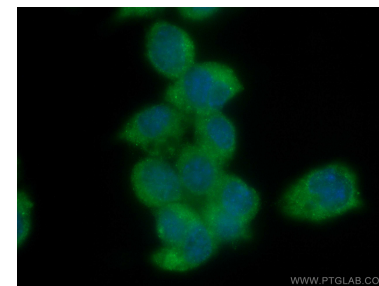
Immunohistochemical analysis of paraffin-embedded human pancreas cancer tissue slide using 60135-2-Ig (CHGA antibody) at dilution of 1:2000 (under 40x lens). Heat mediated antigen retrieval with Tris-EDTA buffer (pH 9.0). This data was developed using the same antibody clone with 60135-2-PBS in a different storage buffer formulation.



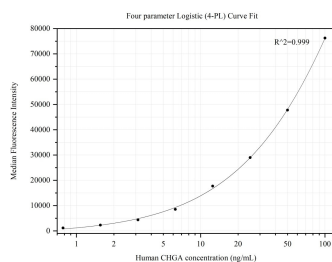
Immunofluorescent analysis of (4% PFA) fixed human pancreas cancer tissue using Chromogranin A antibody (60135-2-Ig, Clone: 2A7D11) at dilution of 1:400 and CoraLite®488-Conjugated AffiniPure Goat Anti-Mouse IgG(H+L). This data was developed using the same antibody clone with 60135-2-PBS in a different storage buffer formulation.



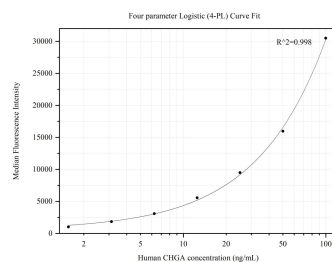
Immunofluorescent analysis of (4% PFA) fixed human pancreas cancer tissue using Chromogranin A antibody (60135-2-Ig, Clone: 2A7D11) at dilution of 1:400 and CoraLite®488-Conjugated AffiniPure Goat Anti-Mouse IgG(H+L). This data was developed using the same antibody clone with 60135-2-PBS in a different storage buffer formulation.



Immunofluorescent analysis of (-20°C Methanol) fixed Neuro-2a cells using Chromogranin A antibody (60135-2-Ig, Clone: 2A7D11) at dilution of 1:400 and CoraLite®488-Conjugated AffiniPure Goat Anti-Mouse IgG(H+L). This data was developed using the same antibody clone with 60135-2-PBS in a different storage buffer formulation.



Cytometric bead array standard curve of MP50241-2, CHGA/Chromogranin A Monoclonal Matched Antibody Pair, PBS Only. Capture antibody: 60135-2-PBS. Detection antibody: 60135-3-PBS. Standard: Ag19780. Range: 0.781-100 ng/mL



Cytometric bead array standard curve of MP50241-3, CHGA/Chromogranin A Monoclonal Matched Antibody Pair, PBS Only. Capture antibody: 68851-1-PBS. Detection antibody: 60135-2-PBS. Standard: Ag19780. Range: 1.563-100 ng/mL