

For Research Use Only

Neudesin/NENF Monoclonal antibody, PBS Only (Capture)

Catalog Number: 60131-1-PBS



Basic Information

Catalog Number: 60131-1-PBS	GenBank Accession Number: BC008823	Purification Method: Protein A purification
Size: 100ug, Concentration: 1mg/ml by Nanodrop;	GeneID (NCBI): 29937	CloneNo.: 4G9E12
Source: Mouse	UNIPROT ID: Q9UMX5	
Isotype: IgG2a	Full Name: neuron derived neurotrophic factor	
Immunogen Catalog Number: AG8387	Calculated MW: 172 aa, 19 kDa	
	Observed MW: 19 kDa, 16 kDa	

Applications

Tested Applications:
WB, IHC, IF/ICC, Cytometric bead array, Indirect ELISA

Species Specificity:
human, pig

Product Information

60131-1-PBS targets Neudesin/NENF as part of a matched antibody pair:

MP50685-1: 60131-1-PBS capture and 60131-2-PBS detection (validated in Cytometric bead array)

MP50685-2: 60131-1-PBS capture and 60131-3-PBS detection (validated in Cytometric bead array)

Unconjugated mouse monoclonal antibody pair in PBS only (BSA and azide free) storage buffer at a concentration of 1 mg/mL, ready for conjugation.

This conjugation ready format makes antibodies ideal for use in many applications including: ELISAs, multiplex assays requiring matched pairs, mass cytometry, and multiplex imaging applications. Antibody use should be optimized by the end user for each application and assay.

Background Information

Neudesin neurotrophic factor (NENF, also known as CIR2, SPUF, and SCIRP10) acts as a neurotrophic factor in postnatal mature neurons enhancing neuronal survival, which is localized to mitochondria and endoplasmic reticulum by PINK1 and PARK7 (PMID: 31536960). NENF in the adult brain is expected to play roles in the maintenance and protection of neurons in an autocrine/paracrine manner (PMID: 15605373). It greatly increases cAMP levels in neural precursor cells and might activate a Gs-protein-coupled receptor that could activate the MAPK, PKA, and PI-3K signal pathways (PMID: 16547973).

Storage

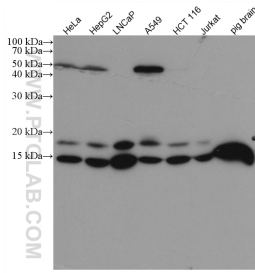
Storage:
Store at -80°C.

Storage Buffer:
PBS Only

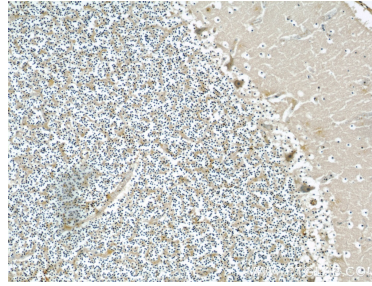
For technical support and original validation data for this product please contact:
T: 1 (888) 4PTGLAB (1-888-478-4522) (toll free in USA), or 1(312) 455-8498 (outside USA)
E: proteintech@ptglab.com
W: ptglab.com

This product is exclusively available under Proteintech Group brand and is not available to purchase from any other manufacturer.

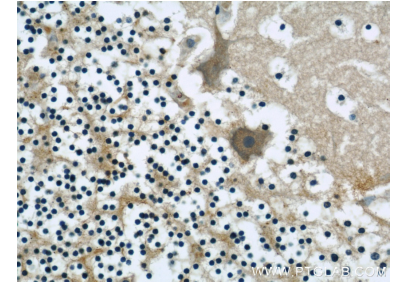
Selected Validation Data



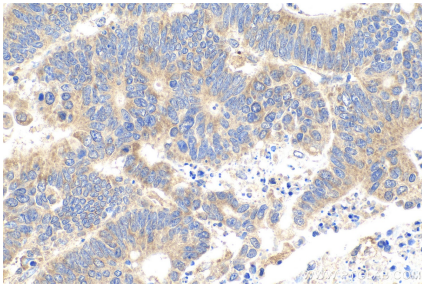
Various lysates were subjected to SDS PAGE followed by western blot with 60131-1-Ig (Neudesin/NENF antibody) at dilution of 1:2000 incubated at room temperature for 1.5 hours. This data was developed using the same antibody clone with 60131-1-PBS in a different storage buffer formulation.



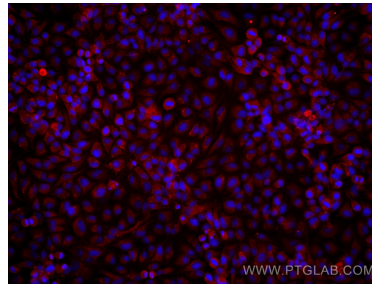
Immunohistochemical analysis of paraffin-embedded human cerebellum using 60131-1-Ig(NENF antibody) at dilution of 1:50 (under 10x lens). This data was developed using the same antibody clone with 60131-1-PBS in a different storage buffer formulation.



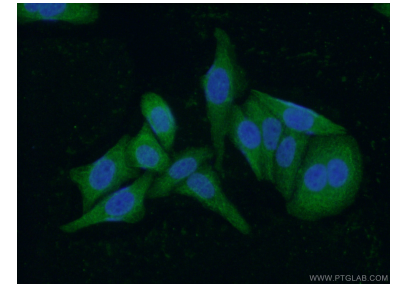
Immunohistochemical analysis of paraffin-embedded human cerebellum using 60131-1-Ig(NENF antibody) at dilution of 1:50 (under 40x lens). This data was developed using the same antibody clone with 60131-1-PBS in a different storage buffer formulation.



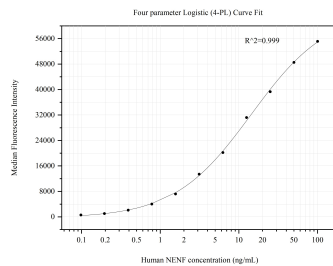
Immunohistochemical analysis of paraffin-embedded human colon cancer tissue slide using 60131-1-Ig (Neudesin/NENF antibody) at dilution of 1:2000 (under 40x lens). Heat mediated antigen retrieval with Tris-EDTA buffer (pH 9.0). This data was developed using the same antibody clone with 60131-1-PBS in a different storage buffer formulation.



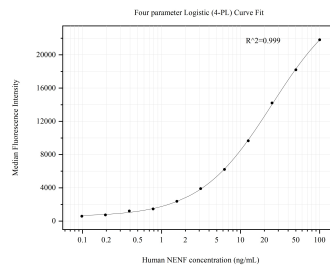
Immunofluorescent analysis of (4% PFA) fixed HeLa cells using Neudesin/NENF antibody (60131-1-Ig. Clone: 4G9E12) at dilution of 1:1900 and Multi-rAb CoraLite® Plus 594-Goat Anti-Mouse Recombinant Secondary Antibody (H+L) (Cat.NO. RGAM004). This data was developed using the same antibody clone with 60131-1-PBS in a different storage buffer formulation.



Immunofluorescent analysis of (-20°C Ethanol) fixed HepG2 cells using 60131-1-Ig(NENF antibody) at dilution of 1:50 and Alexa Fluor 488-conjugated AffiniPure Goat Anti-Mouse IgG(H+L). This data was developed using the same antibody clone with 60131-1-PBS in a different storage buffer formulation.



Cytometric bead array standard curve of MP50685-1, NENF MonoClonal Matched Antibody Pair, PBS Only. Capture antibody: 60131-1-PBS. Detection antibody: 60131-2-PBS. Standard:Ag8387. Range: 0.098-100 ng/mL



Cytometric bead array standard curve of MP50685-2, NENF MonoClonal Matched Antibody Pair, PBS Only. Capture antibody: 60131-1-PBS. Detection antibody: 60131-3-PBS. Standard:Ag8387. Range: 0.098-100 ng/mL