

For Research Use Only

SERPINA10 Monoclonal antibody, PBS Only

Catalog Number: 60113-1-PBS



Basic Information

Catalog Number: 60113-1-PBS	GenBank Accession Number: BC022261	Purification Method: Protein A purification
Size: 100ug, Concentration: 1mg/ml by Nanodrop;	GeneID (NCBI): 51156	CloneNo.: 5B3C9
Source: Mouse	UNIPROT ID: Q9UK55	
Isotype: IgG2a	Full Name: serpin peptidase inhibitor, clade A (alpha-1 antiproteinase, antitrypsin), member 10	
Immunogen Catalog Number: AG2420	Calculated MW: 444 aa, 51 kDa	
	Observed MW: 51 kDa	

Applications

Tested Applications:
WB, IHC, IF/ICC, IF-P, Indirect ELISA

Species Specificity:
human, rat, pig

Background Information

SERPINA10 belongs to the serpin family. It is predominantly expressed in the liver and secreted in plasma. It inhibits the activity of coagulation factors Xa and XIa in the presence of protein Z, calcium and phospholipid. Mutations in this gene are associated with venous thrombosis.

Storage

Storage:
Store at -80°C.

Storage Buffer:
PBS Only

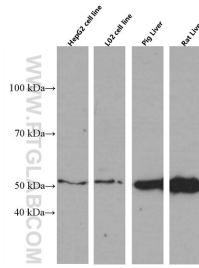
For technical support and original validation data for this product please contact:

T: 1 (888) 4PTGLAB (1-888-478-4522) (toll free in USA), or 1(312) 455-8498 (outside USA)

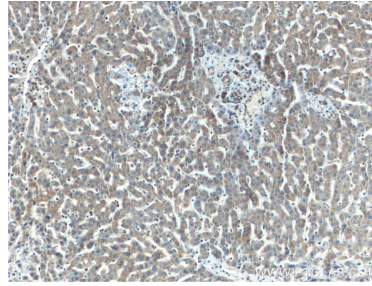
E: proteintech@ptglab.com
W: ptglab.com

This product is exclusively available under Proteintech Group brand and is not available to purchase from any other manufacturer.

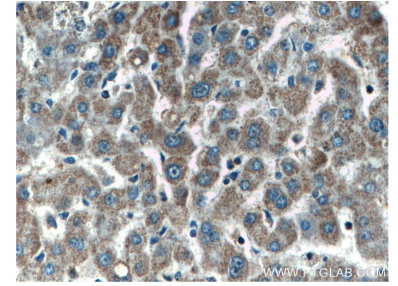
Selected Validation Data



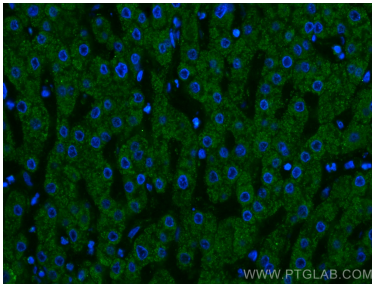
Various lysates were subjected to SDS PAGE followed by western blot with 60113-1-Ig (SERPINA10 antibody) at dilution of 1:3000 incubated at room temperature for 1.5 hours. This data was developed using the same antibody clone with 60113-1-PBS in a different storage buffer formulation.



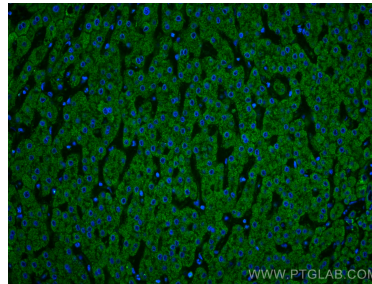
Immunohistochemical analysis of paraffin-embedded human liver tissue slide using 60113-1-Ig (SERPINA10 antibody) at dilution of 1:200 (under 10x lens). This data was developed using the same antibody clone with 60113-1-PBS in a different storage buffer formulation.



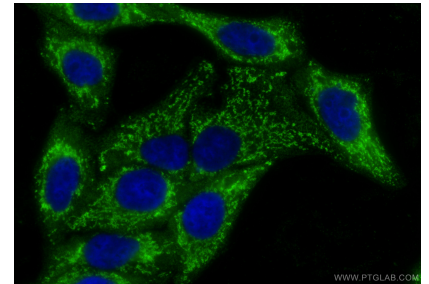
Immunohistochemical analysis of paraffin-embedded human liver tissue slide using 60113-1-Ig (SERPINA10 antibody) at dilution of 1:200 (under 40x lens). This data was developed using the same antibody clone with 60113-1-PBS in a different storage buffer formulation.



Immunofluorescent analysis of (4% PFA) fixed human liver tissue using SERPINA10 antibody (60113-1-Ig, Clone: 5B3C9) at dilution of 1:400 and CoraLite@488-Conjugated AffiniPure Goat Anti-Mouse IgG(H+L). This data was developed using the same antibody clone with 60113-1-PBS in a different storage buffer formulation.



Immunofluorescent analysis of (4% PFA) fixed human liver tissue using SERPINA10 antibody (60113-1-Ig, Clone: 5B3C9) at dilution of 1:400 and CoraLite@488-Conjugated AffiniPure Goat Anti-Mouse IgG(H+L). This data was developed using the same antibody clone with 60113-1-PBS in a different storage buffer formulation.



Immunofluorescent analysis of (-20°C Ethanol) fixed HepG2 cells using SERPINA10 antibody (60113-1-Ig, Clone: 5B3C9) at dilution of 1:800 and CoraLite@488-Conjugated Goat Anti-Mouse IgG(H+L) (SA00013-1). This data was developed using the same antibody clone with 60113-1-PBS in a different storage buffer formulation.