

For Research Use Only

Fibulin 5 Monoclonal antibody, PBS Only



Catalog Number: 60081-1-PBS

Featured Product

Basic Information

Catalog Number:

60081-1-PBS

Size:

100ug, Concentration: 1 mg/ml by Nanodrop;

Source:

Mouse

Isotype:

IgG1

Immunogen Catalog Number:

AG2859

GenBank Accession Number:

BC022280

GeneID (NCBI):

10516

UNIPROT ID:

Q9UBX5

Full Name:

fibulin 5

Calculated MW:

448 aa, 50 kDa

Observed MW:

65 kDa

Purification Method:

Protein A purification

CloneNo.:

2A5C8

Applications

Tested Applications:

WB, IF, ELISA

Species Specificity:

human, mouse, rat, pig

Background Information

Fibulin-5, also known as EVEC and DANCE, is a extracellular matrix glycoprotein, secreted by various cell types such as vascular smooth muscle cells, fibroblasts and endothelial cells. Structurally, Fibulin-5 contains an Arg-Gly-Asp (RGD) motif and calcium-binding EGF-like domains. It promotes adhesion of endothelial cells through interaction of integrins and the RGD motif. FBLN5 mutations have been described in patients with age-related macular degeneration, as well as being involved in Charcot-Marie-Tooth neuropathies.

Storage

Storage:

Store at -80°C.

Storage Buffer:

PBS only

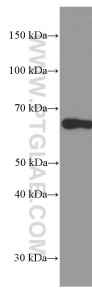
For technical support and original validation data for this product please contact:

T: 1 (888) 4PTGLAB (1-888-478-4522) (toll free in USA), or 1(312) 455-8498 (outside USA)

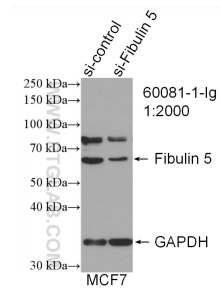
E: proteintech@ptglab.com
W: ptglab.com

This product is exclusively available under Proteintech Group brand and is not available to purchase from any other manufacturer.

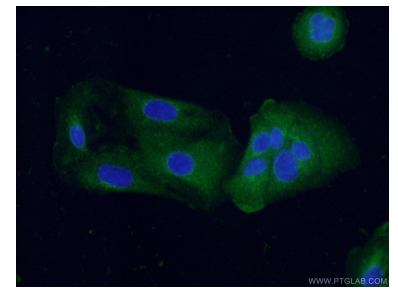
Selected Validation Data



MCF-7 cells were subjected to SDS PAGE followed by western blot with 60081-1-Ig (Fibulin 5 antibody at dilution of 1:3000 incubated at room temperature for 1.5 hours. This data was developed using the same antibody clone with 60081-1-PBS in a different storage buffer formulation.



WB result of Fibulin 5 antibody (60081-1-Ig; 1:2000; incubated at room temperature for 1.5 hours) with sh-Control and sh-Fibulin 5 transfected MCF-7 cells. This data was developed using the same antibody clone with 60081-1-PBS in a different storage buffer formulation.



Immunofluorescent analysis of (-20°C Ethanol) fixed A549 cells using 60081-1-Ig(Fibulin 5 antibody) at dilution of 1:100 and Alexa Fluor 488-conjugated AffiniPure Goat Anti-Mouse IgG(H+L). This data was developed using the same antibody clone with 60081-1-PBS in a different storage buffer formulation.