

For Research Use Only

BORIS Monoclonal antibody, PBS Only



Catalog Number: 60079-1-PBS

Basic Information

Catalog Number: 60079-1-PBS	GenBank Accession Number: BC130486	Purification Method: Protein A purification
Size: 100ug, Concentration: 1 mg/ml by Nanodrop;	GeneID (NCBI): 140690	CloneNo.: 2B12E2
Source: Mouse	UNIPROT ID: Q8NI51	
Isotype: IgG1	Full Name: CCCTC-binding factor (zinc finger protein)-like	
Immunogen Catalog Number: AG1003	Calculated MW: 82 kDa, 75 kDa	
	Observed MW: 75 kDa	

Applications

Tested Applications:
WB, IF, Indirect ELISA

Species Specificity:
human, mouse

Background Information

CTCF, also named BORIS (for brother of the regulator of imprinted sites) is a paralogue of the 11 zinc-finger transcription factor, CTCF. It is predominantly expressed in spermatocytes in the testis, also can be found in tumors and cancer cell lines. It mainly participates in insulator function, nuclear architecture and transcriptional control, which probably acts by recruiting epigenetic chromatin modifiers. It has a key role in gene imprinting in male germline, by participating in the establishment of differential methylation at the IGF2/H19 imprinted control region (ICR). Directly binds the unmethylated H19 ICR and recruits the PRMT7 methyltransferase, leading to methylate histone H4 'Arg-3' to form H4R3me2.

Storage

Storage:
Store at -80°C.

Storage Buffer:
PBS Only

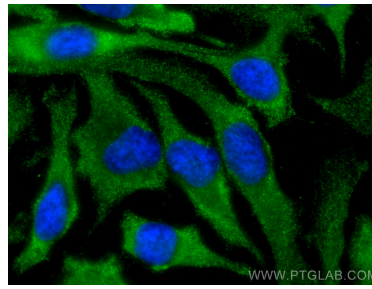
For technical support and original validation data for this product please contact:
T: 1 (888) 4PTGLAB (1-888-478-4522) (toll free in USA), or 1(312) 455-8498 (outside USA) E: proteintech@ptglab.com W: ptglab.com

This product is exclusively available under Proteintech Group brand and is not available to purchase from any other manufacturer.

Selected Validation Data



HeLa cells were subjected to SDS PAGE followed by western blot with 60079-1-Ig (BORIS antibody) at dilution of 1:1000 incubated at room temperature for 1.5 hours. This data was developed using the same antibody clone with 60079-1-PBS in a different storage buffer formulation.



Immunofluorescent analysis of (-20°C Methanol) fixed HeLa cells using BORIS antibody (60079-1-Ig, Clone: 2B12E2) at dilution of 1:400 and CoraLite®488-Conjugated AffiniPure Goat Anti-Mouse IgG(H+L). This data was developed using the same antibody clone with 60079-1-PBS in a different storage buffer formulation.