

For Research Use Only

# GDI2 Monoclonal antibody, PBS Only



Catalog Number: 60078-1-PBS

## Basic Information

<b>Catalog Number:</b> 60078-1-PBS	<b>GenBank Accession Number:</b> BC005145	<b>Purification Method:</b> Protein A purification
<b>Size:</b> 100ug, Concentration: 1 mg/ml by Nanodrop;	<b>GeneID (NCBI):</b> 2665	<b>CloneNo.:</b> 4B8F3
<b>Source:</b> Mouse	<b>UNIPROT ID:</b> P50395	
<b>Isotype:</b> IgG1	<b>Full Name:</b> GDP dissociation inhibitor 2	
<b>Immunogen Catalog Number:</b> AG4613	<b>Calculated MW:</b> 47 kDa	
	<b>Observed MW:</b> 46 kDa	

## Applications

**Tested Applications:**  
WB, IF, IHC, ELISA

**Species Specificity:**  
human, mouse

## Background Information

GDP dissociation inhibitors (GDIs) are proteins that regulate the GDP-GTP exchange reaction of members of the rab family, GDIs can bind and release GDP-bound Rab proteins from membranes. Two GDI proteins towards different Rab proteins have been identified. GDI 1 interacts with almost all of the Rab proteins, while GDI2 interacts with Rab11 but not Rab3A. GDI2 distributes ubiquitously, displaying a membrane bound location in perinuclear regions of cells. GDI-2 was thought to be involved in cellular response to insulin. It electrophoreses as a 46kd protein in SDS-PAGE. (PMID: 7929030; PMID: 19570034). This antibody can bind both GDIs for the close sequences.

## Storage

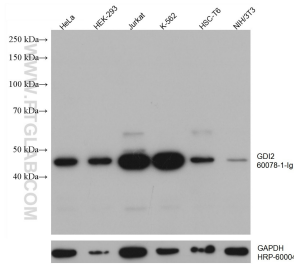
**Storage:**  
Store at -80°C.

**Storage Buffer:**  
PBS only

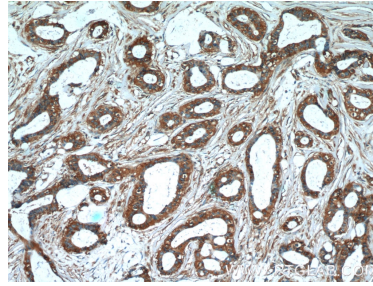
For technical support and original validation data for this product please contact:  
T: 1 (888) 4PTGLAB (1-888-478-4522) (toll free in USA), or 1(312) 455-8498 (outside USA)      E: [proteintech@ptglab.com](mailto:proteintech@ptglab.com)  
W: [ptglab.com](http://ptglab.com)

**This product is exclusively available under Proteintech Group brand and is not available to purchase from any other manufacturer.**

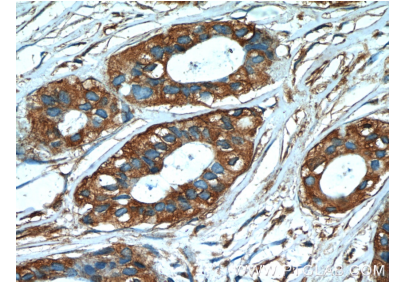
## Selected Validation Data



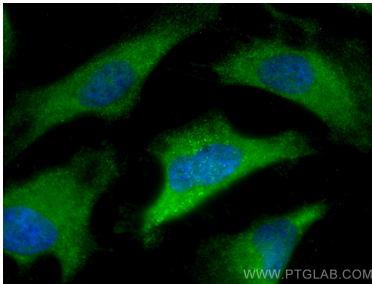
Various lysates were subjected to SDS PAGE followed by western blot with 60078-1-Ig (GDI2 antibody) at dilution of 1:5000 incubated at room temperature for 1.5 hours. The membrane was stripped and reblotted with HRP-conjugated GAPDH Monoclonal antibody (HRP-60004) as loading control. This data was developed using the same antibody clone with 60078-1-PBS in a different storage buffer formulation.



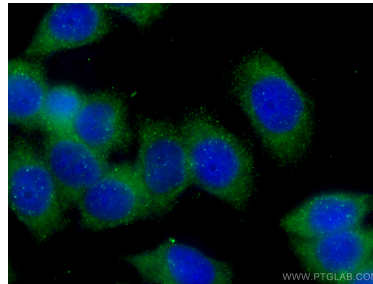
Immunohistochemical analysis of paraffin-embedded human breast cancer tissue slide using 60078-1-Ig (GDI2 Antibody) at dilution of 1:50 (under 10x lens). This data was developed using the same antibody clone with 60078-1-PBS in a different storage buffer formulation.



Immunohistochemical analysis of paraffin-embedded human breast cancer tissue slide using 60078-1-Ig (GDI2 Antibody) at dilution of 1:50 (under 40x lens). This data was developed using the same antibody clone with 60078-1-PBS in a different storage buffer formulation.



Immunofluorescent analysis of (-20°C Methanol) fixed HeLa cells using GDI2 antibody (60078-1-Ig, Clone: 4B8F3) at dilution of 1:800 and CoraLite@488-Conjugated AffiniPure Goat Anti-Mouse IgG(H+L). This data was developed using the same antibody clone with 60078-1-PBS in a different storage buffer formulation.



Immunofluorescent analysis of (-20°C Ethanol) fixed HeLa cells using 60078-1-Ig (GDI2 antibody) at dilution of 1:100 and CoraLite488-Conjugated AffiniPure Goat Anti-Mouse IgG(H+L). This data was developed using the same antibody clone with 60078-1-PBS in a different storage buffer formulation.