

For Research Use Only

# SULT1A1 Monoclonal antibody, PBS Only



Catalog Number: 60076-1-PBS

Featured Product

## Basic Information

Catalog Number:

60076-1-PBS

Size:

100ug, Concentration: 1 mg/ml by Nanodrop;

Source:

Mouse

Isotype:

IgG2a

Immunogen Catalog Number:

AG4611

GenBank Accession Number:

BC000923

GeneID (NCBI):

6817

UNIPROT ID:

P50225

Full Name:

sulfotransferase family, cytosolic, 1A, phenol-preferring, member 1

Calculated MW:

34 kDa

Observed MW:

34 kDa

Purification Method:

Protein A purification

CloneNo.:

10H6F6

## Applications

Tested Applications:

WB, Indirect ELISA

Species Specificity:

human, mouse, rat, pig

## Background Information

SULT1A1, also named as ST1A1, P-PST 1, ST1A3, Ts-PST, P-PST 1, STP and STP1, belongs to the sulfotransferase 1 family. It catalyzes the sulfate conjugation of catecholamines, phenolic drugs and neurotransmitters. SULT1A1 is also responsible for the sulfation and activation of minoxidil. It mediates the metabolic activation of carcinogenic N-hydroxyarylamines to DNA binding products and could so participate as modulating factor of cancer risk. SULT1A1 is one of two phenol sulfotransferases with thermostable enzyme activity.

## Storage

Storage:

Store at -80°C.

Storage Buffer:

PBS Only

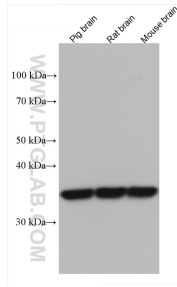
For technical support and original validation data for this product please contact:

T: 1 (888) 4PTGLAB (1-888-478-4522) (toll free in USA), or 1(312) 455-8498 (outside USA)

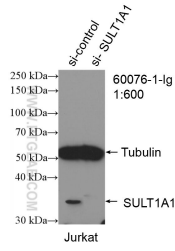
E: [proteintech@ptglab.com](mailto:proteintech@ptglab.com)  
W: [ptglab.com](http://ptglab.com)

This product is exclusively available under Proteintech Group brand and is not available to purchase from any other manufacturer.

## Selected Validation Data



Various lysates were subjected to SDS PAGE followed by western blot with 60076-1-Ig (SULT1A1 antibody) at dilution of 1:3000 incubated at room temperature for 1.5 hours. This data was developed using the same antibody clone with 60076-1-PBS in a different storage buffer formulation.



WB result of SULT1A1 antibody (60076-1-Ig; 1:600; incubated at room temperature for 1.5 hours) with sh-Control and sh-SULT1A1 transfected Jurkat cells. This data was developed using the same antibody clone with 60076-1-PBS in a different storage buffer formulation.