

For Research Use Only

Septin 2 Monoclonal antibody, PBS Only (Capture)



Catalog Number: 60075-1-PBS

Featured Product

Basic Information

Catalog Number: 60075-1-PBS	GenBank Accession Number: BC014455	Purification Method: Protein G purification
Size: 100ug, Concentration: 1mg/ml by Nanodrop;	GeneID (NCBI): 4735	CloneNo.: 2F3B2
Source: Mouse	UNIPROT ID: Q15019	
Isotype: IgG1	Full Name: septin 2	
Immunogen Catalog Number: AG1946	Calculated MW: 41 kDa	
	Observed MW: 42-45 kDa	

Applications

Tested Applications:
WB, IHC, IF/ICC, FC (Intra), Cytometric bead array,
Indirect ELISA

Species Specificity:
human, mouse, rat

Product Information

60075-1-PBS targets Septin 2 as part of a matched antibody pair:

MP50982-1: 60075-1-PBS capture and 60075-2-PBS detection (validated in Cytometric bead array)

Unconjugated mouse monoclonal antibody pair in PBS only (BSA and azide free) storage buffer at a concentration of 1 mg/mL, ready for conjugation.

This conjugation ready format makes antibodies ideal for use in many applications including: ELISAs, multiplex assays requiring matched pairs, mass cytometry, and multiplex imaging applications. Antibody use should be optimized by the end user for each application and assay.

Background Information

Septin 2, also named as DIFF6, KIAA0158, NEDD5, belongs to the septin family. It is a filament-forming cytoskeletal GTPase. Septin 2 is required for normal organization of the actin cytoskeleton. It plays a role in ciliogenesis and collective cell movements. Septin 2 is coordinated expression with Septin 6 and Septin 7. (PMID:21737677)

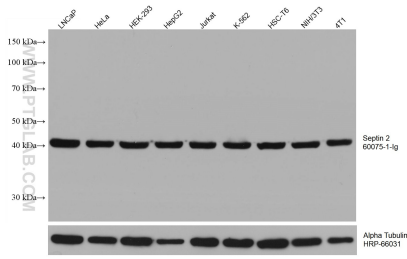
Storage

Storage:
Store at -80°C.
Storage Buffer:
PBS Only

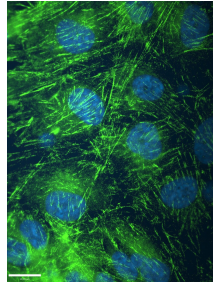
For technical support and original validation data for this product please contact:
T: 1 (888) 4PTGLAB (1-888-478-4522) (toll free in USA), or 1(312) 455-8498 (outside USA) E: proteintech@ptglab.com
W: ptglab.com

This product is exclusively available under Proteintech Group brand and is not available to purchase from any other manufacturer.

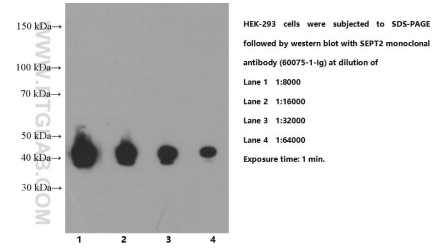
Selected Validation Data



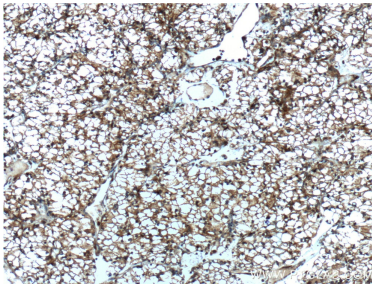
Various lysates were subjected to SDS PAGE followed by western blot with 60075-1-Ig (Septin 2 antibody) at dilution of 1:100000 incubated at room temperature for 1.5 hours. The membrane was stripped and reblotted with HRP-conjugated Alpha Tubulin Monoclonal antibody (HRP-66031) as loading control. This data was developed using the same antibody clone with 60075-1-PBS in a different storage buffer formulation.



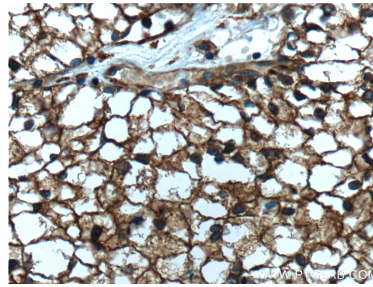
IF result of anti-Septin 2 (60075-1-Ig, 1:1000) with hTERT-RPE cell by Dr. Moshe Kim. Green: Septin 2. Blue: DNA. 1% PFA fixed. This data was developed using the same antibody clone with 60075-1-PBS in a different storage buffer formulation.



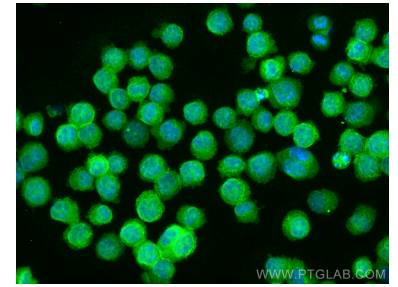
HEK-293 cells were subjected to SDS PAGE followed by western blot with 60075-1-Ig (Septin 2 Antibody) at various dilutions incubated at room temperature for 1.5 hours. This data was developed using the same antibody clone with 60075-1-PBS in a different storage buffer formulation.



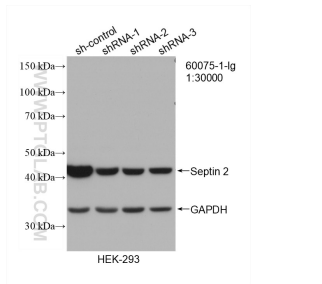
Immunohistochemical analysis of paraffin-embedded human renal cell carcinoma tissue slide using 60075-1-Ig (Septin 2 Antibody) at dilution of 1:800 (under 10x lens). Heat mediated antigen retrieval with Tris-EDTA buffer (pH 9.0). This data was developed using the same antibody clone with 60075-1-PBS in a different storage buffer formulation.



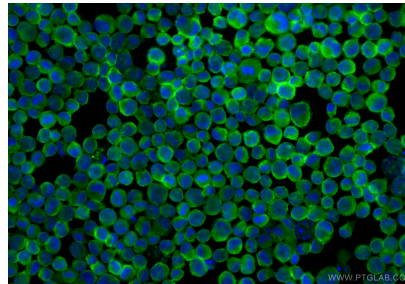
Immunohistochemical analysis of paraffin-embedded human renal cell carcinoma tissue slide using 60075-1-Ig (Septin 2 Antibody) at dilution of 1:800 (under 40x lens). Heat mediated antigen retrieval with Tris-EDTA buffer (pH 9.0). This data was developed using the same antibody clone with 60075-1-PBS in a different storage buffer formulation.



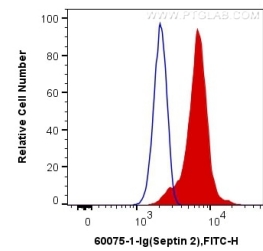
Immunofluorescent analysis of (4% PFA) fixed K-562 cells using Septin 2 antibody (60075-1-Ig, Clone: 2F3B2) at dilution of 1:800 and CoraLite@488-Conjugated AffiniPure Goat Anti-Mouse IgG(H+L). This data was developed using the same antibody clone with 60075-1-PBS in a different storage buffer formulation.



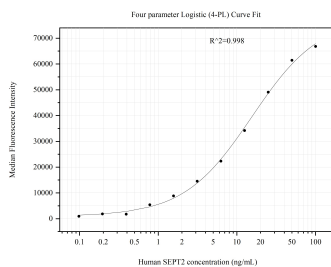
WB result of Septin 2 antibody (60075-1-Ig; 1:30000; incubated at room temperature for 1.5 hours) with sh-Control and sh-Septin 2 transfected HEK-293 cells. This data was developed using the same antibody clone with 60075-1-PBS in a different storage buffer formulation.



Immunofluorescent analysis of (4% PFA) fixed K-562 cells using Septin 2 antibody (60075-1-Ig, Clone: 2F3B2) at dilution of 1:800 and CoraLite@488-Conjugated AffiniPure Goat Anti-Mouse IgG(H+L) (SA00013-1). This data was developed using the same antibody clone with 60075-1-PBS in a different storage buffer formulation.



1X10⁶ K-562 cells were intracellularly stained with 0.4 ug Anti-Human Septin 2 (60075-1-Ig, Clone:2F3B2) and CoraLite@488-Conjugated AffiniPure Goat Anti-Mouse IgG(H+L) at dilution 1:1000 (red), or 0.4 ug Control Antibody. Cells were fixed with 4% PFA and permeabilized with Flow Cytometry Perm Buffer (PF00011-C). This data was developed using the same antibody clone with 60075-1-PBS in a different storage buffer formulation.



Cytometric bead array standard curve of MP50982-1, SEPT2 Monoclonal Matched Antibody Pair, PBS Only. Capture antibody: 60075-1-PBS. Detection antibody: 60075-2-PBS. Standard:Ag1946. Range: 0.098-100 ng/mL