

For Research Use Only

IFITM1-Specific Monoclonal antibody, PBS Only



Catalog Number: 60074-1-PBS

Featured Product

Basic Information

Catalog Number:

60074-1-PBS

Size:

100ug , Concentration: 1 mg/ml by
Nanodrop;

Source:

Mouse

Isotype:

IgG2a

Immunogen Catalog Number:

AG2320

GenBank Accession Number:

BC000897

GeneID (NCBI):

8519

UNIPROT ID:

P13164

Full Name:

interferon induced transmembrane
protein 1 (9-27)

Calculated MW:

14 kDa

Observed MW:

14-17 kDa

Purification Method:

Protein A purification

CloneNo.:

5B5E2

Applications

Tested Applications:

WB, IP, IF, IHC, ELISA

Species Specificity:

human

Background Information

IFITM1(interferon induced transmembrane protein), also named DSPA2a and interferon-induced protein 17 (IFI17), belongs to the CD225 family. It has two transmembrane domain and serves as an IFN-induced antiviral protein that mediates cellular innate immunity to at least three major human pathogens, influenza A H1N1 virus, West Nile virus (WNV), and dengue virus , by inhibiting the early steps of replication. IFITM proteins are recently identified as viral restriction factors that inhibit infection mediated by the influenza A virus (IAV) hemagglutinin (HA) protein. Also they serve as important components of the innate immune system to restrict HIV-1 infection. 60074-1-Ig is a mouse monoclonal antibody which specifically recognizing IFITM1 but not IFITM2 or IFITM3.

Storage

Storage:

Store at -80°C.

Storage Buffer:

PBS only

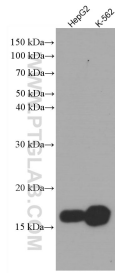
For technical support and original validation data for this product please contact:

T: 1 (888) 4PTGLAB (1-888-478-4522) (toll free
in USA), or 1(312) 455-8498 (outside USA)

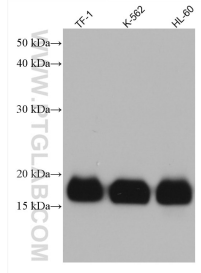
E: proteintech@ptglab.com
W: ptglab.com

This product is exclusively available under Proteintech Group brand and is not available to purchase from any other manufacturer.

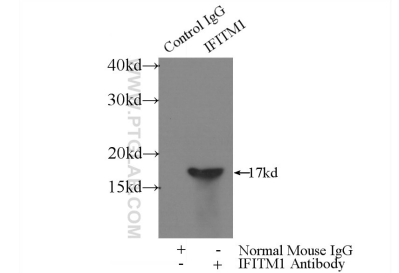
Selected Validation Data



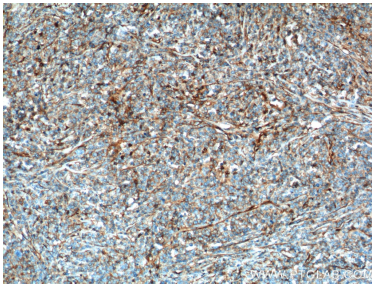
Various lysates were subjected to SDS PAGE followed by western blot with 60074-1-Ig (IFITM1-Specific antibody) at dilution of 1:50000 incubated at room temperature for 1.5 hours. This data was developed using the same antibody clone with 60074-1-PBS in a different storage buffer formulation.



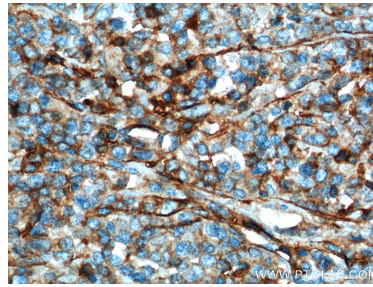
TF-1 cells were subjected to SDS PAGE followed by western blot with 60074-1-Ig (IFITM1-Specific antibody) at dilution of 1:50000 incubated at room temperature for 1.5 hours. This data was developed using the same antibody clone with 60074-1-PBS in a different storage buffer formulation.



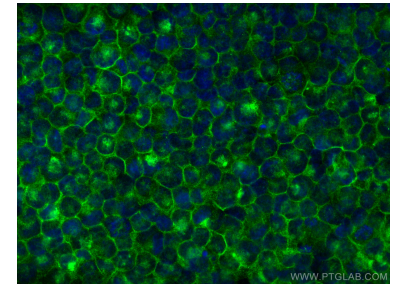
IP result of anti-IFITM1-Specific (IP:60074-1-Ig, 4ug; Detection:60074-1-Ig 1:500) with HepG2 cells lysate 3600ug. This data was developed using the same antibody clone with 60074-1-PBS in a different storage buffer formulation.



Immunohistochemical analysis of paraffin-embedded human lymphoma tissue slide using 60074-1-Ig (IFITM1-Specific Antibody) at dilution of 1:500 (under 10x lens). Heat mediated antigen retrieval with Tris-EDTA buffer (pH 9.0). This data was developed using the same antibody clone with 60074-1-PBS in a different storage buffer formulation.



Immunohistochemical analysis of paraffin-embedded human lymphoma tissue slide using 60074-1-Ig (IFITM1-Specific Antibody) at dilution of 1:500 (under 40x lens). Heat mediated antigen retrieval with Tris-EDTA buffer (pH 9.0). This data was developed using the same antibody clone with 60074-1-PBS in a different storage buffer formulation.



Immunofluorescent analysis of (4% PFA) fixed K-562 cells using IFITM1-Specific antibody (60074-1-Ig, Clone: 5B5E2) at dilution of 1:400 and CoraLite@488-Conjugated AffiniPure Goat Anti-Mouse IgG(H+L). This data was developed using the same antibody clone with 60074-1-PBS in a different storage buffer formulation.