

For Research Use Only

Stanniocalcin 2 Monoclonal antibody

Catalog Number: 60063-1-Ig

Featured Product

7 Publications



Basic Information

Catalog Number: 60063-1-Ig	GenBank Accession Number: BC000658	Purification Method: Protein A purification
Size: 150ul, Concentration: 2196 µg/ml by Nanodrop and 1000 µg/ml by Bradford method using BSA as the standard;	GeneID (NCBI): 8614	CloneNo.: 4H1E7
Source: Mouse	UNIPROT ID: O76061	Recommended Dilutions: WB 1:1000-1:6000 IHC 1:500-1:2000 IF/ICC 1:400-1:1600
Isotype: IgG1	Full Name: stanniocalcin 2	
Immunogen Catalog Number: AG0359	Calculated MW: 33 kDa	
	Observed MW: 44 kDa	

Applications

Tested Applications:
WB, IHC, IF/ICC, ELISA

Cited Applications:
WB, IHC

Species Specificity:
human, mouse, pig

Cited Species:
human, mouse

Note-IHC: suggested antigen retrieval with TE buffer pH 9.0; (*) Alternatively, antigen retrieval may be performed with citrate buffer pH 6.0

Positive Controls:

WB: A549 cells, hTERT-RPE1 cells, T-47D cells, HEK-293 cells, HT-29 cells, HCT 116 cells, HepG2 cells, PC-3 cells, pig brain tissue

IHC: mouse kidney tissue, human breast cancer tissue, human kidney tissue, human stomach cancer tissue

IF/ICC: HeLa cells,

Background Information

Stanniocalcin (STC) is a family of secreted glycoprotein hormones that originally discovered in the corpuscles of Stannius, an endocrine gland of fish. STC1 and STC2, two homologues of STC family, are reported to involve in calcium and phosphate homeostasis. It is expressed in a wide variety of tissues such as kidney, spleen, heart, and pancreas. The protein may play a role in the regulation of renal and intestinal calcium and phosphate transport, cell metabolism, or cellular calcium/phosphate homeostasis. STC2 overexpression could promote tumor cell proliferation, invasion and metastasis in prostate cancer, ovarian cancer or neuroblastoma. STC2 is also vital for cytoprotective properties when exposed to ER stress and hypoxia.

Notable Publications

Author	Pubmed ID	Journal	Application
Bo Yu	33774276	Biochem Biophys Res Commun	IHC, WB
Menghua Cai	30902679	Neuroscience	WB
Zhixian WuJin	35300206	J Hepatocell Carcinoma	IHC

Storage

Storage:

Store at -20°C. Stable for one year after shipment.

Storage Buffer:

PBS with 0.02% sodium azide and 50% glycerol pH 7.3.

Aliquoting is unnecessary for -20°C storage

*** 20ul sizes contain 0.1% BSA

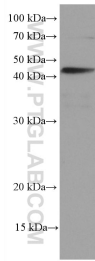
For technical support and original validation data for this product please contact:

T: 1 (888) 4PTGLAB (1-888-478-4522) (toll free in USA), or 1(312) 455-8498 (outside USA)

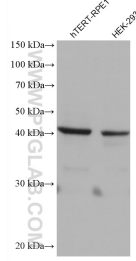
E: proteintech@ptglab.com
W: ptglab.com

This product is exclusively available under Proteintech Group brand and is not available to purchase from any other manufacturer.

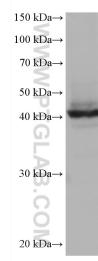
Selected Validation Data



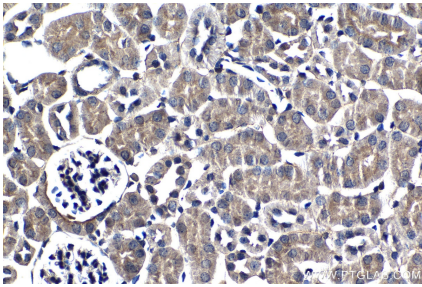
A549 cells were subjected to SDS PAGE followed by western blot with 60063-1-Ig (Stanniocalcin 2 antibody) at dilution of 1:3000 incubated at room temperature for 1.5 hours.



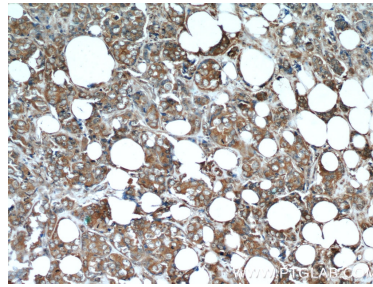
Various lysates were subjected to SDS PAGE followed by western blot with 60063-1-Ig (Stanniocalcin 2 antibody) at dilution of 1:1000 incubated at room temperature for 1.5 hours.



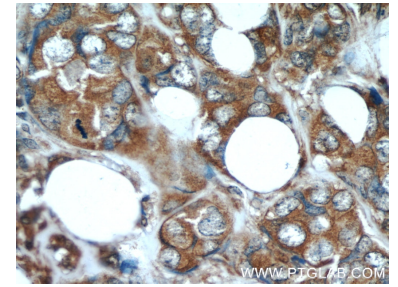
T-47D cells were subjected to SDS PAGE followed by western blot with 60063-1-Ig (Stanniocalcin 2 antibody) at dilution of 1:1000 incubated at room temperature for 1.5 hours.



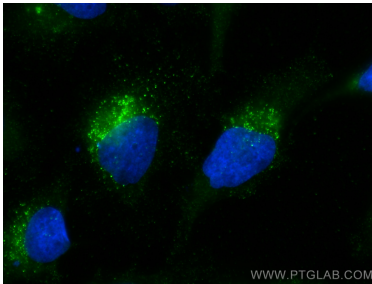
Immunohistochemical analysis of paraffin-embedded mouse kidney tissue slide using 60063-1-Ig (Stanniocalcin 2 antibody) at dilution of 1:1000 (under 40x lens). Heat mediated antigen retrieval with Tris-EDTA buffer (pH 9.0).



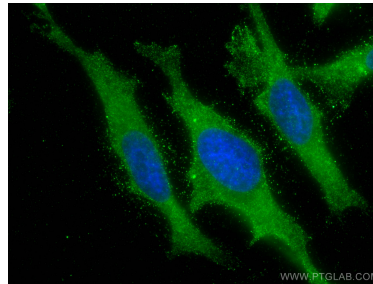
Immunohistochemical analysis of paraffin-embedded human breast cancer using 60063-1-Ig (Stanniocalcin 2 antibody) at dilution of 1:50 (under 10x lens).



Immunohistochemical analysis of paraffin-embedded human breast cancer using 60063-1-Ig (Stanniocalcin 2 antibody) at dilution of 1:50 (under 40x lens).



Immunofluorescent analysis of (-20°C Methanol) fixed HeLa cells using Stanniocalcin 2 antibody (60063-1-Ig, Clone: 4H1E7) at dilution of 1:800 and CoraLite®488-Conjugated Goat Anti-Mouse IgG(H+L).



Immunofluorescent analysis of (-20°C Methanol) fixed HeLa cells using Stanniocalcin 2 antibody (60063-1-Ig, Clone: 4H1E7) at dilution of 1:500 and CoraLite®488-Conjugated Goat Anti-Mouse IgG(H+L).