

For Research Use Only

Syntaxin 6 Monoclonal antibody

Catalog Number: 60059-1-Ig **2 Publications**



Basic Information

Catalog Number: 60059-1-Ig	GenBank Accession Number: BC009944	Purification Method: Protein A purification
Size: 150ul , Concentration: 1400 ug/ml by Nanodrop and 1000 ug/ml by Bradford method using BSA as the standard;	GeneID (NCBI): 10228	CloneNo.: 2B6G4
Source: Mouse	UNIPROT ID: O43752	Recommended Dilutions: WB 1:2000-1:16000 IHC 1:50-1:500 IF/ICC 1:200-1:800
Isotype: IgG1	Full Name: syntaxin 6	
Immunogen Catalog Number: AG1284	Calculated MW: 29 kDa	
	Observed MW: 29 kDa	

Applications

Tested Applications: WB, IHC, IF/ICC, ELISA	Positive Controls:
Cited Applications: WB	WB : C6 cells, SH-SY5Y cells, U-251 cells, Jurkat cells, Neuro-2a cells, human brain tissue, rat brain tissue, mouse brain tissue
Species Specificity: human, mouse, rat	IHC : human brain tissue, human prostate cancer tissue
Cited Species: human	IF/ICC : PC-12 cells,
Note-IHC: suggested antigen retrieval with TE buffer pH 9.0; (*) Alternatively, antigen retrieval may be performed with citrate buffer pH 6.0	

Background Information

Syntaxin-6 (STX6) is a SNARE protein located in the trans-Golgi network (TGN) and endosomes. It associates with a variety of SNARE proteins and is involved in intracellular vesicle trafficking. STX6 is required for sorting proteins from endosomes toward either the TGN or lysosomes.

Notable Publications

Author	Pubmed ID	Journal	Application
Shouheng Jin	36057605	Nat Commun	WB
Ryosei Motoo	39621656	PLoS One	WB

Storage

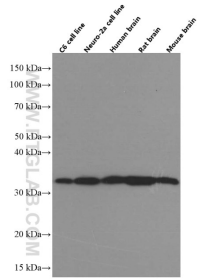
Storage:
Store at -20°C. Stable for one year after shipment.
Storage Buffer:
PBS with 0.02% sodium azide and 50% glycerol pH 7.3.
Aliquoting is unnecessary for -20°C storage

*** 20ul sizes contain 0.1% BSA

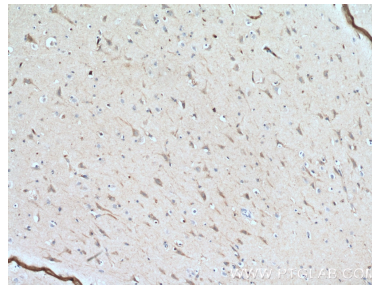
For technical support and original validation data for this product please contact:
T: 1 (888) 4PTGLAB (1-888-478-4522) (toll free in USA), or 1(312) 455-8498 (outside USA)
E: proteintech@ptglab.com
W: ptglab.com

This product is exclusively available under Proteintech Group brand and is not available to purchase from any other manufacturer.

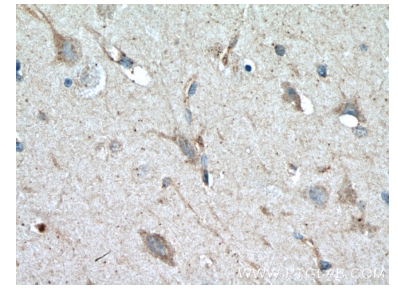
Selected Validation Data



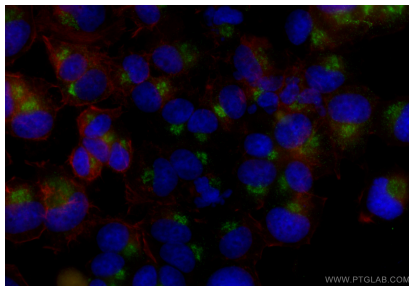
Various lysates were subjected to SDS PAGE followed by western blot with 60059-1-Ig (Syntaxin 6 antibody at dilution of 1:8000 incubated at room temperature for 1.5 hours.



Immunohistochemical analysis of paraffin-embedded human brain tissue slide using 60059-1-Ig (Syntaxin 6 antibody at dilution of 1:200 (under 10x lens). Heat mediated antigen retrieval with Tris-EDTA buffer (pH 9.0).



Immunohistochemical analysis of paraffin-embedded human brain tissue slide using 60059-1-Ig (Syntaxin 6 antibody at dilution of 1:200 (under 40x lens). Heat mediated antigen retrieval with Tris-EDTA buffer (pH 9.0).



Immunofluorescent analysis of (4% PFA) fixed PC-12 cells using Syntaxin 6 antibody (60059-1-Ig, Clone: 2B6G4) at dilution of 1:400 and CoraLite®488-Conjugated Goat Anti-Mouse IgG(H+L) (SA00013-1), CL594-Phalloidin (red).