

For Research Use Only

PLOD3 Monoclonal antibody, PBS Only

Catalog Number: 60058-1-PBS

Featured Product



Basic Information

Catalog Number:

60058-1-PBS

Size:

100ug, Concentration: 1mg/ml by Nanodrop;

Source:

Mouse

Isotype:

IgG2a

Immunogen Catalog Number:

AG1480

GenBank Accession Number:

BC011674

GeneID (NCBI):

8985

UNIPROT ID:

O60568

Full Name:

procollagen-lysine, 2-oxoglutarate 5-dioxygenase 3

Calculated MW:

738 aa, 85 kDa

Observed MW:

80-85 kDa

Purification Method:

Protein A purification

CloneNo.:

2G12B8

Applications

Tested Applications:

WB, IHC, IF/ICC, IP, Indirect ELISA

Species Specificity:

human, mouse, rat

Background Information

PLOD3, also named as LH3, forms hydroxylysine residues in -Xaa-Lys-Gly- sequences in collagens. These hydroxylysines serve as sites of attachment for carbohydrate units and are essential for the stability of the intermolecular collagen cross-links. The major function of PLOD3 in osteoblasts is to glucosylate galactosylhydroxylysine residues in type I collagen.

Storage

Storage:

Store at -80°C.

Storage Buffer:

PBS only, pH7.3

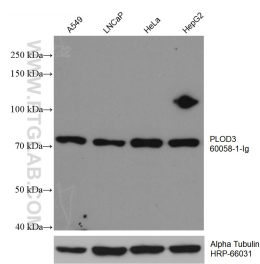
For technical support and original validation data for this product please contact:

T: 1 (888) 4PTGLAB (1-888-478-4522) (toll free in USA), or 1(312) 455-8498 (outside USA)

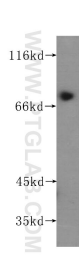
E: proteintech@ptglab.com
W: ptglab.com

This product is exclusively available under Proteintech Group brand and is not available to purchase from any other manufacturer.

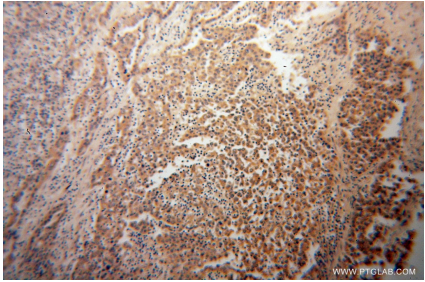
Selected Validation Data



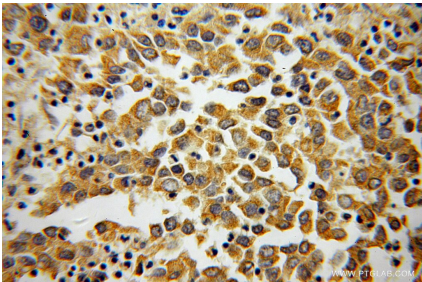
Various lysates were subjected to SDS PAGE followed by western blot with 60058-1-Ig (PLOD3 antibody) at dilution of 1:10000 incubated at room temperature for 1.5 hours. The membrane was stripped and reblotted with HRP-conjugated Alpha Tubulin Monoclonal antibody (HRP-66031) as loading control. This data was developed using the same antibody clone with 60058-1-PBS in a different storage buffer formulation.



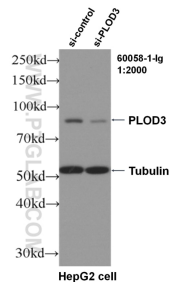
human placenta tissue were subjected to SDS PAGE followed by western blot with 60058-1-Ig (PLOD3 antibody) at dilution of 1:300 incubated at room temperature for 1.5 hours. This data was developed using the same antibody clone with 60058-1-PBS in a different storage buffer formulation.



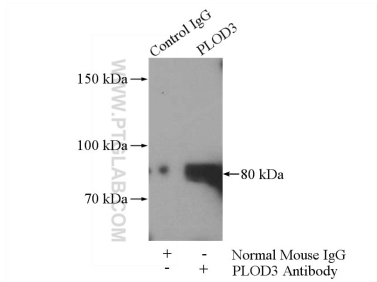
Immunohistochemical analysis of paraffin-embedded human pancreas cancer using 60058-1-Ig (PLOD3 antibody) at dilution of 1:100 (under 10x lens). This data was developed using the same antibody clone with 60058-1-PBS in a different storage buffer formulation.



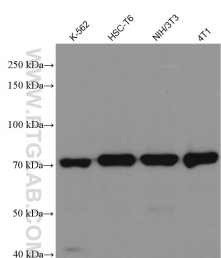
Immunohistochemical analysis of paraffin-embedded human pancreas cancer using 60058-1-Ig (PLOD3 antibody) at dilution of 1:100 (under 40x lens). This data was developed using the same antibody clone with 60058-1-PBS in a different storage buffer formulation.



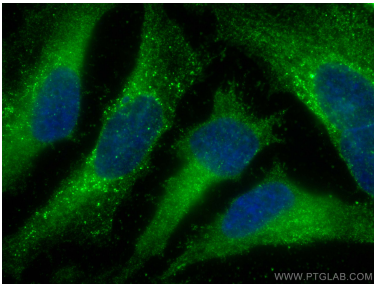
WB result of PLOD3 antibody (60058-1-Ig, 1:2000) with si-Control and si-PLOD3 transfected HepG2 cells. This data was developed using the same antibody clone with 60058-1-PBS in a different storage buffer formulation.



IP result of anti-PLOD3 (IP:60058-1-Ig, 5ug; Detection:60058-1-Ig 1:500) with HeLa cells lysate 1400ug. This data was developed using the same antibody clone with 60058-1-PBS in a different storage buffer formulation.



Various lysates were subjected to SDS PAGE followed by western blot with 60058-1-Ig (PLOD3 antibody) at dilution of 1:10000 incubated at room temperature for 1.5 hours. This data was developed using the same antibody clone with 60058-1-PBS in a different storage buffer formulation.



Immunofluorescent analysis of (-20°C Methanol) fixed HeLa cells using PLOD3 antibody (60058-1-Ig, Clone: 2G12B8) at dilution of 1:400 and CoraLite®488-Conjugated AffiniPure Goat Anti-Mouse IgG(H+L). This data was developed using the same antibody clone with 60058-1-PBS in a different storage buffer formulation.