

For Research Use Only

# KMO Monoclonal antibody, PBS Only

Catalog Number: 60029-1-PBS



## Basic Information

<b>Catalog Number:</b> 60029-1-PBS	<b>GenBank Accession Number:</b> BC005297	<b>Purification Method:</b> Protein A purification
<b>Size:</b> 100ug , Concentration: 1 mg/ml by Nanodrop;	<b>GeneID (NCBI):</b> 8564	<b>CloneNo.:</b> 2D2F2
<b>Source:</b> Mouse	<b>UNIPROT ID:</b> O15229	
<b>Isotype:</b> IgG1	<b>Full Name:</b> kynurenine 3-monooxygenase (kynurenine 3-hydroxylase)	
<b>Immunogen Catalog Number:</b> AG1109	<b>Calculated MW:</b> 486 aa, 56 kDa	
	<b>Observed MW:</b> 56 kDa	

## Applications

**Tested Applications:**  
WB, Indirect ELISA

**Species Specificity:**  
human

## Background Information

KMO(Kynurenine 3-monooxygenase) is a membrane protein located on the outer membrane of mitochondria. Tissue distribution studies have revealed that, in rats, highest enzyme activity is found in kidney and liver, with brain having the least activity in comparison to peripheral organs(PMID: 9237672).

## Storage

**Storage:**  
Store at -80°C.

**Storage Buffer:**  
PBS Only

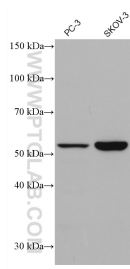
For technical support and original validation data for this product please contact:

T: 1 (888) 4PTGLAB (1-888-478-4522) (toll free in USA), or 1(312) 455-8498 (outside USA)

E: [proteintech@ptglab.com](mailto:proteintech@ptglab.com)  
W: [ptglab.com](http://ptglab.com)

**This product is exclusively available under Proteintech Group brand and is not available to purchase from any other manufacturer.**

## Selected Validation Data



Various lysates were subjected to SDS PAGE followed by western blot with 60029-1-Ig (KMO antibody) at dilution of 1:10000 incubated at room temperature for 1.5 hours. This data was developed using the same antibody clone with 60029-1-PBS in a different storage buffer formulation.