

For Research Use Only

DHCR24 Monoclonal antibody, PBS Only (Detector)

Catalog Number:60028-1-PBS



Basic Information

Catalog Number: 60028-1-PBS	GenBank Accession Number: BC004375	Purification Method: Protein G purification
Size: 100ug , Concentration: 1mg/ml by Nanodrop;	GeneID (NCBI): 1718	CloneNo.: 2F6E11
Source: Mouse	UNIPROT ID: Q15392	
Isotype: IgG1	Full Name: 24-dehydrocholesterol reductase	
Immunogen Catalog Number: AG0756	Calculated MW: 60 kDa, 516 aa	
	Observed MW: 60 kDa	

Applications

Tested Applications:
WB, IHC, Cytometric bead array, Indirect ELISA

Species Specificity:
human

Product Information

60028-1-PBS targets DHCR24 as part of a matched antibody pair:

MP51020-1: 60028-2-PBS capture and 60028-1-PBS detection (validated in Cytometric bead array)

Unconjugated mouse monoclonal antibody pair in PBS only (BSA and azide free) storage buffer at a concentration of 1 mg/mL, ready for conjugation.

This conjugation ready format makes antibodies ideal for use in many applications including: ELISAs, multiplex assays requiring matched pairs, mass cytometry, and multiplex imaging applications. Antibody use should be optimized by the end user for each application and assay.

Background Information

DHCR24(3-beta-hydroxysterol delta-24-reductase), also named as Seladin-1 or Diminuto/dwarf1 homolog, is a member of the flavin adenine dinucleotide (FAD)-dependent oxidoreductases, and catalyzes the reduction of the delta-24 double bond of sterol intermediates during cholesterol biosynthesis. The dhcr24 expression was shown to be down regulated in brain areas affected by Alzheimer's disease and endogenous DHCR24/seladin-1 levels are highly up-regulated upon acute oxidative stress while expression declines to very low levels upon chronic exposure (PMID:17984220). In apoptotic cells, endogenous seladin-1 was cleaved to a 40 kDa derivative in a caspase-dependent manner (PMID: 11007892).

Storage

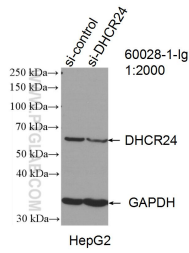
Storage:
Store at -80°C.

Storage Buffer:
PBS Only

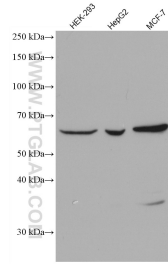
For technical support and original validation data for this product please contact:
T: 1 (888) 4PTGLAB (1-888-478-4522) (toll free in USA), or 1(312) 455-8498 (outside USA) E: proteintech@ptglab.com
W: ptglab.com

This product is exclusively available under Proteintech Group brand and is not available to purchase from any other manufacturer.

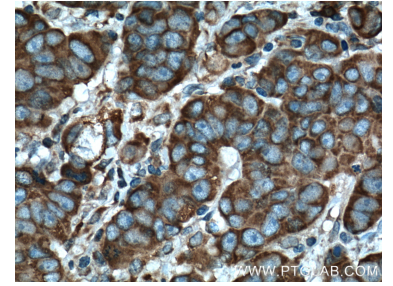
Selected Validation Data



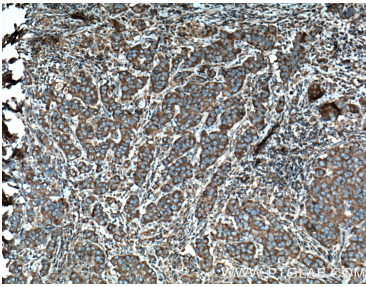
WB result of DHCR24 antibody (60028-1-Ig; 1:2000; incubated at room temperature for 1.5 hours) with sh-Control and sh-DHCR24 transfected HepG2 cells. This data was developed using the same antibody clone with 60028-1-PBS in a different storage buffer formulation.



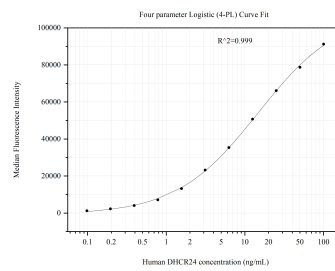
Various lysates were subjected to SDS PAGE followed by western blot with 60028-1-Ig (DHCR24 antibody) at dilution of 1:2000 incubated at room temperature for 1.5 hours. This data was developed using the same antibody clone with 60028-1-PBS in a different storage buffer formulation.



Immunohistochemical analysis of paraffin-embedded human prostate cancer tissue slide using 60028-1-Ig (DHCR24 Antibody) at dilution of 1:200 (under 40x lens). Heat mediated antigen retrieval with Tris-EDTA buffer (pH 9.0). This data was developed using the same antibody clone with 60028-1-PBS in a different storage buffer formulation.



Immunohistochemical analysis of paraffin-embedded human prostate cancer tissue slide using 60028-1-Ig (DHCR24 Antibody) at dilution of 1:200 (under 10x lens). Heat mediated antigen retrieval with Tris-EDTA buffer (pH 9.0). This data was developed using the same antibody clone with 60028-1-PBS in a different storage buffer formulation.



Cytometric bead array standard curve of MP51020-1, DHCR24 Monoclonal Matched Antibody Pair, PBS Only. Capture antibody: 60028-2-PBS. Detection antibody: 60028-1-PBS. Standard: Ag0756. Range: 0.098-100 ng/mL.