

For Research Use Only

KEAP1 Monoclonal antibody, PBS Only

Catalog Number: 60027-1-PBS

Featured Product



Basic Information

Catalog Number:

60027-1-PBS

Size:

100ug, Concentration: 1mg/ml by Nanodrop;

Source:

Mouse

Isotype:

IgA

Immunogen Catalog Number:

AG0779

GenBank Accession Number:

BC002930

GeneID (NCBI):

9817

UNIPROT ID:

Q14145

Full Name:

kelch-like ECH-associated protein 1

Calculated MW:

624 aa, 70 kDa

Observed MW:

60-70 kDa

Purification Method:

Thiophilic affinity chromatograph

CloneNo.:

4G10H9

Applications

Tested Applications:

WB, IHC, IF/ICC, Indirect ELISA

Species Specificity:

human, mouse, rat

Background Information

KEAP1, also named as INRF2, KIAA0132 and KLHL19, is part of a multiprotein complex that contains the CUL3-ROC1 ubiquitin ligase, which can ubiquitinate the N-terminal domain of NRF2. Two molecules of KEAP1 bind to two distinct sites in the N-terminal region of NRF2, the ETGE and DLG sites, which affect the KEAP1-NRF2 interaction and/or its physiological consequences. KEAP1 retains NFE2L2/NRF2 in the cytosol. It functions as substrate adapter protein for the E3 ubiquitin ligase complex formed by CUL3 and RBX1. It also retains BPTF in the cytosol. This antibody is a mouse monoclonal antibody raised against residues near the C terminus of human KEAP1.

Storage

Storage:

Store at -80°C.

Storage Buffer:

PBS Only

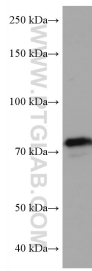
For technical support and original validation data for this product please contact:

T: 1 (888) 4PTGLAB (1-888-478-4522) (toll free in USA), or 1(312) 455-8498 (outside USA)

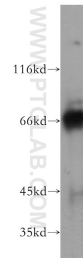
E: proteintech@ptglab.com
W: ptglab.com

This product is exclusively available under Proteintech Group brand and is not available to purchase from any other manufacturer.

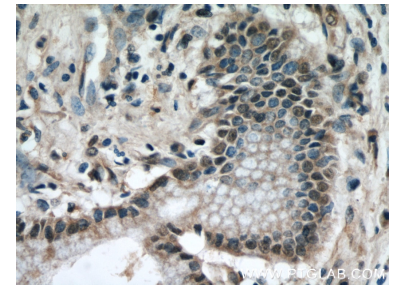
Selected Validation Data



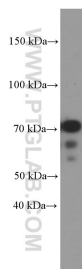
4T1 cells were subjected to SDS PAGE followed by western blot with 60027-1-Ig (KEAP1 antibody) at dilution of 1:2000 incubated at room temperature for 1.5 hours. This data was developed using the same antibody clone with 60027-1-PBS in a different storage buffer formulation.



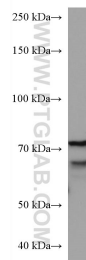
HeLa cells were subjected to SDS PAGE followed by western blot with 60027-1-Ig (KEAP1 antibody) at dilution of 1:400 incubated at room temperature for 1.5 hours. This data was developed using the same antibody clone with 60027-1-PBS in a different storage buffer formulation.



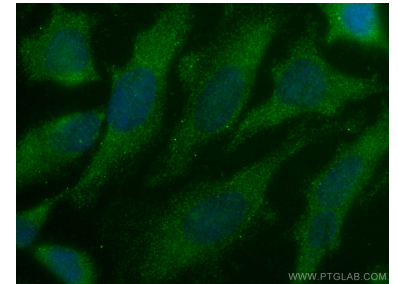
Immunohistochemical analysis of paraffin-embedded human pancreas cancer using 60027-1-Ig(KEAP1 antibody) at dilution of 1:50 (under 40x lens). This data was developed using the same antibody clone with 60027-1-PBS in a different storage buffer formulation.



MCF-7 cells were subjected to SDS PAGE followed by western blot with 60027-1-Ig (KEAP1 Antibody) at dilution of 1:1000 incubated at room temperature for 1.5 hours. This data was developed using the same antibody clone with 60027-1-PBS in a different storage buffer formulation.



Jurkat cells were subjected to SDS PAGE followed by western blot with 60027-1-Ig (KEAP1 antibody) at dilution of 1:2000 incubated at room temperature for 1.5 hours. This data was developed using the same antibody clone with 60027-1-PBS in a different storage buffer formulation.



Immunofluorescent analysis of (-20°C Ethanol) fixed HeLa cells using KEAP1 antibody (60027-1-Ig, Clone: 4G10H9) at dilution of 1:400 and CoraLite®488-Conjugated AffiniPure Goat Anti-Mouse IgG(H+L). This data was developed using the same antibody clone with 60027-1-PBS in a different storage buffer formulation.