

For Research Use Only

# TGFBI / BIGH3 Monoclonal antibody, PBS Only



Catalog Number: 60007-1-PBS

Featured Product

## Basic Information

**Catalog Number:**

60007-1-PBS

**Size:**

100ug, Concentration: 1mg/ml by Nanodrop;

**Source:**

Mouse

**Isotype:**

IgG2a

**Immunogen Catalog Number:**

AG0241

**GenBank Accession Number:**

BC000097

**GeneID (NCBI):**

7045

**ENSEMBL Gene ID:**

ENSG00000120708

**UNIPROT ID:**

Q15582

**Full Name:**

transforming growth factor, beta-induced, 68kDa

**Calculated MW:**

683 aa, 75 kDa

**Observed MW:**

68 kDa

**Purification Method:**

Caprylic acid/ammonium sulfate precipitation

**CloneNo.:**

3E11D11

## Applications

**Tested Applications:**

WB, IP, IF, IHC, Indirect ELISA

**Species Specificity:**

human

## Background Information

TGFBI, also named as BIGH3, Kerato-epithelin and RGD-CAP, binds to type I, II, and IV collagens. TGFBI is an adhesion protein which may play an important role in cell-collagen interactions. In cartilage, it may be involved in endochondral bone formation. TGFBI is an extracellular matrix adaptor protein, it has been reported to be differentially expressed in transformed tissues. TGFBI is a predictive factor of the response to chemotherapy, and suggest the use of TGFBI-derived peptides as possible therapeutic adjuvants for the enhancement of responses to chemotherapy.(PMID:20509890) Defects in TGFBI are the cause of epithelial basement membrane corneal dystrophy (EBMD). Defects in TGFBI are the cause of corneal dystrophy Groenouw type 1 (CDGG1). Defects in TGFBI are the cause of corneal dystrophy lattice type 1 (CDL1). Defects in TGFBI are a cause of corneal dystrophy Thiel-Behnke type (CTDB). Defects in TGFBI are the cause of Reis-Buecklers corneal dystrophy (CDRB). Defects in TGFBI are the cause of lattice corneal dystrophy type 3A (CDL3A). Defects in TGFBI are the cause of Avellino corneal dystrophy (ACD).

## Storage

**Storage:**

Store at -80°C.

**Storage Buffer:**

PBS Only

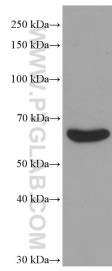
For technical support and original validation data for this product please contact:

T: 1 (888) 4PTGLAB (1-888-478-4522) (toll free in USA), or 1(312) 455-8498 (outside USA)

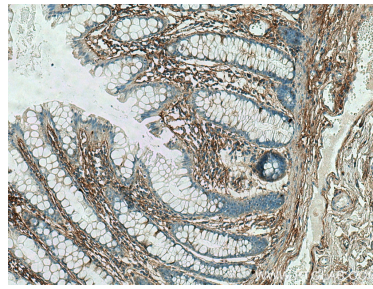
E: [proteintech@ptglab.com](mailto:proteintech@ptglab.com)  
W: [ptglab.com](http://ptglab.com)

This product is exclusively available under Proteintech Group brand and is not available to purchase from any other manufacturer.

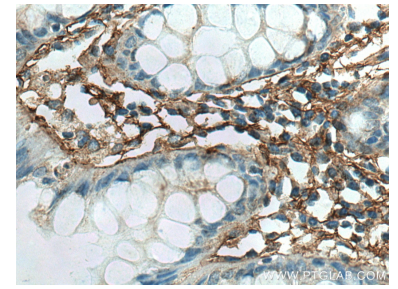
## Selected Validation Data



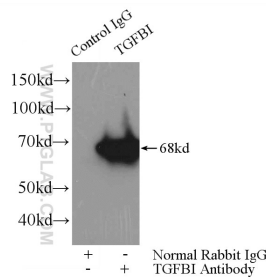
human kidney tissue were subjected to SDS PAGE followed by western blot with 60007-1-Ig (TGFB1 / BIGH3 antibody) at dilution of 1:1000 incubated at room temperature for 1.5 hours. This data was developed using the same antibody clone with 60007-1-PBS in a different storage buffer formulation.



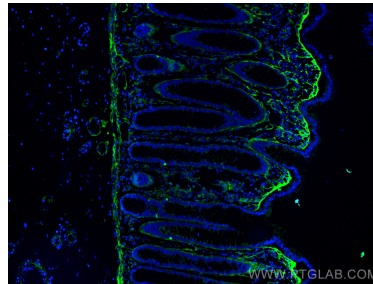
Immunohistochemical analysis of paraffin-embedded human colon tissue slide using 60007-1-Ig (TGFB1 / BIGH3 antibody) at dilution of 1:1000 (under 10x lens). Heat mediated antigen retrieval with Tris-EDTA buffer (pH 9.0). This data was developed using the same antibody clone with 60007-1-PBS in a different storage buffer formulation.



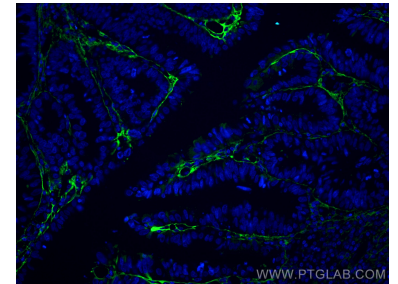
Immunohistochemical analysis of paraffin-embedded human colon tissue slide using 60007-1-Ig (TGFB1 / BIGH3 antibody) at dilution of 1:1000 (under 40x lens). Heat mediated antigen retrieval with Tris-EDTA buffer (pH 9.0). This data was developed using the same antibody clone with 60007-1-PBS in a different storage buffer formulation.



IP result of anti-TGFB1 / BIGH3 (IP:60007-1-Ig, 4ug; Detection:60007-1-Ig 1:300) with HeLa cells lysate 1200ug. This data was developed using the same antibody clone with 60007-1-PBS in a different storage buffer formulation.



Immunofluorescent analysis of (4% PFA) fixed human colon cancer tissue using TGFB1 / BIGH3 antibody (60007-1-Ig, Clone: 3E11D11) at dilution of 1:400 and CoraLite®488-Conjugated AffiniPure Goat Anti-Mouse IgG(H+L). This data was developed using the same antibody clone with 60007-1-PBS in a different storage buffer formulation.



Immunofluorescent analysis of (4% PFA) fixed human colon cancer tissue using TGFB1 / BIGH3 antibody (60007-1-Ig, Clone: 3E11D11) at dilution of 1:400 and CoraLite®488-Conjugated AffiniPure Goat Anti-Mouse IgG(H+L). This data was developed using the same antibody clone with 60007-1-PBS in a different storage buffer formulation.