

For Research Use Only

# CD2 Monoclonal antibody, PBS Only (Capture)

Catalog Number:60005-1-PBS



## Basic Information

<b>Catalog Number:</b> 60005-1-PBS	<b>GenBank Accession Number:</b> BC033583	<b>Purification Method:</b> Protein G purification
<b>Size:</b> 100ug , Concentration: 1mg/ml by Nanodrop;	<b>GeneID (NCBI):</b> 914	<b>CloneNo.:</b> 3A10B2
<b>Source:</b> Mouse	<b>ENSEMBL Gene ID:</b> ENSG00000116824	
<b>Isotype:</b> IgG1	<b>UNIPROT ID:</b> P06729	
<b>Immunogen Catalog Number:</b> AG0423	<b>Full Name:</b> CD2 molecule	
	<b>Calculated MW:</b> 351 aa, 39 kDa	
	<b>Observed MW:</b> 50 kDa	

## Applications

**Tested Applications:**  
WB, IHC, Cytometric bead array, Indirect ELISA

**Species Specificity:**  
human

## Product Information

60005-1-PBS targets CD2 as part of a matched antibody pair:

MP51114-3: 60005-1-PBS capture and 60781-4-PBS detection (validated in Cytometric bead array)

Unconjugated mouse monoclonal antibody pair in PBS only (BSA and azide free) storage buffer at a concentration of 1 mg/mL, ready for conjugation.

This conjugation ready format makes antibodies ideal for use in many applications including: ELISAs, multiplex assays requiring matched pairs, mass cytometry, and multiplex imaging applications. Antibody use should be optimized by the end user for each application and assay.

## Background Information

CD2 is a cell surface glycoprotein present on a majority of thymocytes, all mature T cells and subset of NK cells but not on B lymphocytes. It is a pan T-cell marker. CD2 interacts with lymphocyte function-associated antigen (LFA-3/CD58) and CD48/BCM1 to mediate adhesion between T-cells and other cell types. CD2 is implicated in the triggering of T-cells, the cytoplasmic domain is implicated in the signaling function.

## Storage

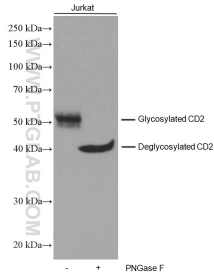
**Storage:**  
Store at -80°C.

**Storage Buffer:**  
PBS Only

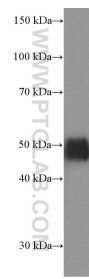
For technical support and original validation data for this product please contact:  
T: 1 (888) 4PTGLAB (1-888-478-4522) (toll free in USA), or 1(312) 455-8498 (outside USA)      E: proteintech@ptglab.com  
W: ptglab.com

**This product is exclusively available under Proteintech Group brand and is not available to purchase from any other manufacturer.**

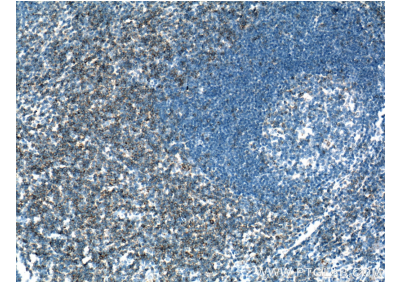
## Selected Validation Data



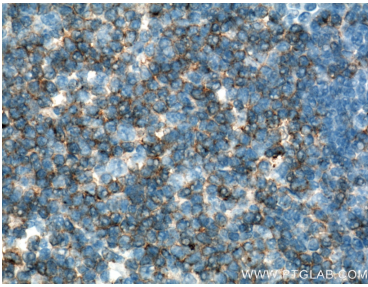
Untreated and PNGase F-treated lysates of Jurkat cells were subjected to SDS PAGE followed by western blot with 60005-1-Ig (CD2 antibody) at dilution of 1:3000 incubated at room temperature for 1.5 hours. PNGase F was obtained from Atagenix (cat.NO. ata808). This data was developed using the same antibody clone with 60005-1-PBS in a different storage buffer formulation.



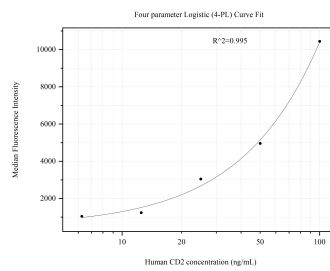
Jurkat cells were subjected to SDS PAGE followed by western blot with 60005-1-Ig (CD2 Antibody) at dilution of 1:1000 incubated at room temperature for 1.5 hours. This data was developed using the same antibody clone with 60005-1-PBS in a different storage buffer formulation.



Immunohistochemical analysis of paraffin-embedded human tonsillitis tissue slide using 60005-1-Ig (CD2 antibody) at dilution of 1:200 (under 10x lens. Heat mediated antigen retrieval with Tris-EDTA buffer (pH 9.0). This data was developed using the same antibody clone with 60005-1-PBS in a different storage buffer formulation.



Immunohistochemical analysis of paraffin-embedded human tonsillitis tissue slide using 60005-1-Ig (CD2 antibody) at dilution of 1:200 (under 40x lens. Heat mediated antigen retrieval with Tris-EDTA buffer (pH 9.0). This data was developed using the same antibody clone with 60005-1-PBS in a different storage buffer formulation.



Cytometric bead array standard curve of MP51114-3, CD2 Monoclonal Matched Antibody Pair, PBS Only. Capture antibody: 60005-1-PBS. Detection antibody: 60781-4-PBS. Standard: Eg0138. Range: 6.25-100 ng/mL.