

For Research Use Only

ZFYVE26 Polyclonal antibody

Catalog Number: 55418-1-AP



Basic Information

Catalog Number: 55418-1-AP	GenBank Accession Number: NM_015346	Purification Method: Antigen affinity purification
Size: 150ul , Concentration: 450 ug/ml by Nanodrop;	GeneID (NCBI): 23503	Recommended Dilutions: IHC 1:50-1:500 IF/ICC 1:200-1:800
Source: Rabbit	UNIPROT ID: Q68DK2	
Isotype: IgG	Full Name: zinc finger, FYVE domain containing 26	
	Calculated MW: 285 kDa	

Applications

Tested Applications: IHC, IF/ICC, ELISA	Positive Controls: IHC : mouse heart tissue, IF/ICC : NIH/3T3 cells,
Species Specificity: human, mouse	
Note-IHC: suggested antigen retrieval with TE buffer pH 9.0; (*) Alternatively, antigen retrieval may be performed with citrate buffer pH 6.0	

Background Information

ZFYVE26 is a large protein of 2539 amino acid residues and contains a FYVE domain that confers to the protein binding affinity to the membrane-associated phosphatidylinositol 3-phosphate (PtdIns3P). ZFYVE26 has a diffuse cytoplasmic distribution and partially colocalizes with early endosomes, the endoplasmic reticulum, microtubules, and vesicles. It localizes also to the midbody during cytokinesis (PMID: 24284334).

Storage

Storage:
Store at -20°C. Stable for one year after shipment.
Storage Buffer:
PBS with 0.02% sodium azide and 50% glycerol pH 7.3.
Aliquoting is unnecessary for -20°C storage

*** 20ul sizes contain 0.1% BSA

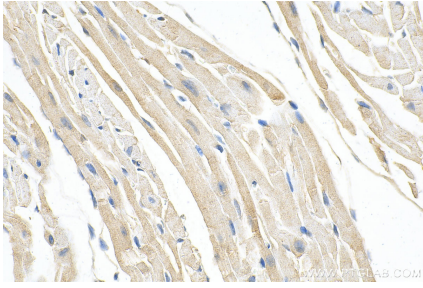
For technical support and original validation data for this product please contact:

T: 1 (888) 4PTGLAB (1-888-478-4522) (toll free in USA), or 1(312) 455-8498 (outside USA)

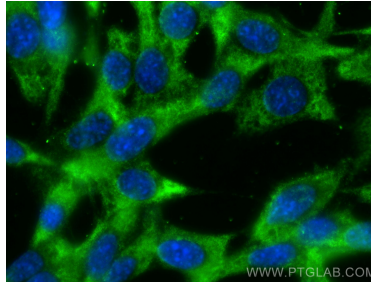
E: proteintech@ptglab.com
W: ptglab.com

This product is exclusively available under Proteintech Group brand and is not available to purchase from any other manufacturer.

Selected Validation Data



Immunohistochemical analysis of paraffin-embedded mouse heart tissue slide using 55418-1-AP (ZFYVE26 antibody) at dilution of 1:200 (under 40x lens). Heat mediated antigen retrieval with Tris-EDTA buffer (pH 9.0).



Immunofluorescent analysis of (-20°C Ethanol) fixed NIH/3T3 cells using ZFYVE26 antibody (55418-1-AP) at dilution of 1:400 and CoraLite®488-Conjugated Goat Anti-Rabbit IgG(H+L) (SA00013-2).