

For Research Use Only

EVC2 Polyclonal antibody

Catalog Number: 55367-1-AP



Basic Information

Catalog Number: 55367-1-AP	GenBank Accession Number: NM_147127	Purification Method: Antigen affinity purification
Size: 150ul , Concentration: 700 ug/ml by Nanodrop;	GeneID (NCBI): 132884	Recommended Dilutions: WB 1:500-1:2000 IHC 1:50-1:500
Source: Rabbit	UNIPROT ID: Q86UK5	
Isotype: IgG	Full Name: Ellis van Creveld syndrome 2	
	Calculated MW: 148 kDa	
	Observed MW: 140 kDa	

Applications

Tested Applications: WB, IHC, ELISA	Positive Controls:
Species Specificity: Mouse, Human	WB : mouse lung tissue,
Note-IHC: suggested antigen retrieval with TE buffer pH 9.0; (*) Alternatively, antigen retrieval may be performed with citrate buffer pH 6.0	IHC : human placenta tissue,

Background Information

EVC2 (also known as LIMBIN) is close proximity in divergent orientation to EVC and mutations in both human genes lead to the chondrodysplasia Ellis-van Creveld (EvC) syndrome. Typical symptoms of EvC include shorter limbs and ribs, postaxial polydactyly, dysplastic nails, and cardiovascular defects (PMID: 28081373). Additionally, EvC syndrome has been characterized as a ciliopathy because the EVC and EVC2 proteins are intracellularly localized at the bottom of the primary cilium, where they form a heterotrimeric protein complex with SMO and transduce Hedgehog(Hh) signaling (PMID: 30410447). EVC2 is expressed in the heart, placenta, lung, liver, skeletal muscle, kidney, and pancreas. EVC2 has 3 isoforms with the molecular mass of 140-148 kDa.

Storage

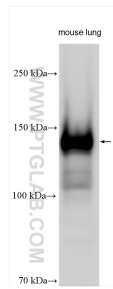
Storage:
Store at -20°C. Stable for one year after shipment.
Storage Buffer:
PBS with 0.02% sodium azide and 50% glycerol pH 7.3.
Aliquoting is unnecessary for -20°C storage

*** 20ul sizes contain 0.1% BSA

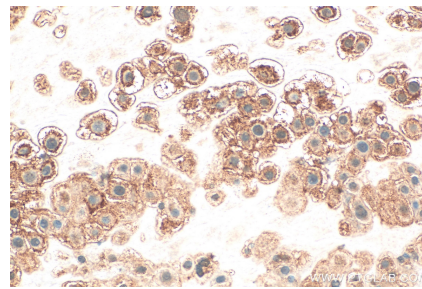
For technical support and original validation data for this product please contact:
T: 1 (888) 4PTGLAB (1-888-478-4522) (toll free in USA), or 1(312) 455-8498 (outside USA)
E: proteintech@ptglab.com
W: ptglab.com

This product is exclusively available under Proteintech Group brand and is not available to purchase from any other manufacturer.

Selected Validation Data



Mouse lung tissue were subjected to SDS PAGE followed by western blot with 55367-1-AP (EVC2 antibody) at dilution of 1:1000 incubated at room temperature for 1.5 hours.



Immunohistochemical analysis of paraffin-embedded human placenta tissue slide using 55367-1-AP (EVC2 antibody) at dilution of 1:200 (under 40x lens). Heat mediated antigen retrieval with Tris-EDTA buffer (pH 9.0).