

For Research Use Only

LIMS2 Polyclonal antibody

Catalog Number: 55300-1-AP



Basic Information

Catalog Number:

55300-1-AP

Size:

150ul , Concentration: 650 µg/ml by Nanodrop;

Source:

Rabbit

Isotype:

IgG

GenBank Accession Number:

NM_017980

GeneID (NCBI):

55679

UNIPROT ID:

Q7Z4I7

Full Name:

LIM and senescent cell antigen-like domains 2

Calculated MW:

39 kDa

Observed MW:

35-40

Purification Method:

Antigen affinity purification

Recommended Dilutions:

WB 1:2000-1:16000

Applications

Tested Applications:

WB, ELISA

Species Specificity:

human, mouse, rat

Positive Controls:

WB : human placenta tissue, mouse bladder tissue, rat bladder tissue

Background Information

LIMS2, also known as PINCH2, is a member of a small family of focal adhesion proteins. LIMS2 contains five LIM domains, each domain forming two zinc fingers, which permit interactions that regulate cell shape and migration. Along with integrin-linked kinase and parvin, LIMS2 is a component of a complex that mediates multiple protein-protein interactions at adhesion sites between cells and the extracellular matrix (ECM) (PMID: 12167643). Mutations in LIMS2 are associated with a novel muscular dystrophy, severe cardiomyopathy and triangular tongues (PMID: 25589244).

Storage

Storage:

Store at -20°C. Stable for one year after shipment.

Storage Buffer:

PBS with 0.02% sodium azide and 50% glycerol pH 7.3.

Aliquoting is unnecessary for -20°C storage

***** 20ul sizes contain 0.1% BSA**

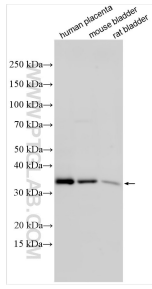
For technical support and original validation data for this product please contact:

T: 1 (888) 4PTGLAB (1-888-478-4522) (toll free in USA), or 1(312) 455-8498 (outside USA)

E: proteintech@ptglab.com
W: ptglab.com

This product is exclusively available under Proteintech Group brand and is not available to purchase from any other manufacturer.

Selected Validation Data



Various lysates were subjected to SDS PAGE followed by western blot with 55300-1-AP (LIMS2 antibody) at dilution of 1:8000 incubated at room temperature for 1.5 hours.