

For Research Use Only

# SPTA1 Polyclonal antibody

Catalog Number: 55227-1-AP



## Basic Information

**Catalog Number:**

55227-1-AP

**Size:**

150ul , Concentration: 1000 ug/ml by Nanodrop and 180 ug/ml by Bradford method using BSA as the standard;

**Source:**

Rabbit

**Isotype:**

IgG

**GenBank Accession Number:**

NM\_003126

**GeneID (NCBI):**

6708

**UNIPROT ID:**

P02549

**Full Name:**

spectrin, alpha, erythrocytic 1 (elliptocytosis 2)

**Calculated MW:**

280 kDa

**Observed MW:**

280 kDa

**Purification Method:**

Antigen affinity purification

**Recommended Dilutions:**

WB 1:200-1:1000

IF-P 1:50-1:500

## Applications

**Tested Applications:**

WB, IF-P, FC (Intra), ELISA

**Species Specificity:**

human, rat

**Positive Controls:**

WB : rat red blood cells, human blood

IF-P : mouse lung tissue,

## Background Information

Alpha 1 Spectrin also known as SPTA1, EL2, belongs to the spectrin family. Spectrin is the major constituent of the cytoskeletal network underlying the erythrocyte plasma membrane. It associates with band 4.1 and actin to form the cytoskeletal superstructure of the erythrocyte plasma membrane. Mutations in SPTA1 result in a variety of hereditary red blood cell disorders, including elliptocytosis-2, pyropoikilocytosis, and spherocytosis, type 3 (PMID: 1541680, 8941647).

## Storage

**Storage:**

Store at -20°C. Stable for one year after shipment.

**Storage Buffer:**

PBS with 0.02% sodium azide and 50% glycerol pH 7.3.

Aliquoting is unnecessary for -20°C storage

**\*\*\* 20ul sizes contain 0.1% BSA**

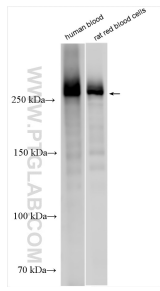
For technical support and original validation data for this product please contact:

T: 1 (888) 4PTGLAB (1-888-478-4522) (toll free in USA), or 1(312) 455-8498 (outside USA)

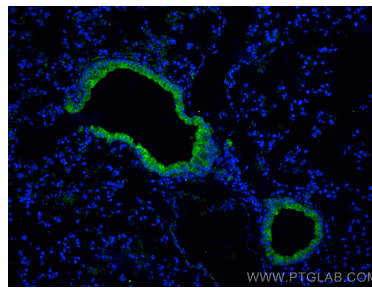
E: [proteintech@ptglab.com](mailto:proteintech@ptglab.com)  
W: [ptglab.com](http://ptglab.com)

**This product is exclusively available under Proteintech Group brand and is not available to purchase from any other manufacturer.**

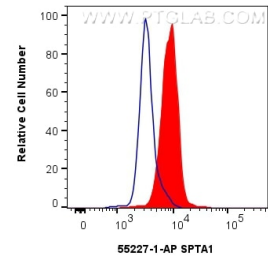
## Selected Validation Data



Various lysates were subjected to SDS PAGE followed by western blot with 55227-1-AP (SPTA1 antibody) at dilution of 1:300 incubated at room temperature for 1.5 hours.



Immunofluorescent analysis of (4% PFA) fixed paraffin-embedded mouse lung tissue using SPTA1 antibody (55227-1-AP) at dilution of 1:200 and Multi-rAb CoraLite® Plus 488-Goat Anti-Rabbit Recombinant Secondary Antibody (H+L) (RGAR002). Heat mediated antigen retrieval with Tris-EDTA buffer (pH 9.0).



$1 \times 10^6$  K-562 cells were intracellularly stained with 0.4  $\mu$ g SPTA1 Polyclonal antibody (55227-1-AP) and CoraLite® 488-Conjugated AffiniPure Goat Anti-Rabbit IgG(H+L) (SA00013-2)(red), or 0.4  $\mu$ g Rabbit IgG control Rabbit PolyAb (30000-0-AP) (blue). Cells were fixed with 4% PFA and permeabilized with Flow Cytometry Perm Buffer (PF00011-C).