

For Research Use Only

# PPP1CB-Specific Polyclonal antibody

Catalog Number: 55136-1-AP

Featured Product

2 Publications



## Basic Information

**Catalog Number:**

55136-1-AP

**Size:**

150ul, Concentration: 1600 µg/ml by Nanodrop and 653 µg/ml by Bradford method using BSA as the standard;

**Source:**

Rabbit

**Isotype:**

IgG

**GenBank Accession Number:**

NM\_002709

**GeneID (NCBI):**

5500

**UNIPROT ID:**

P62140

**Full Name:**

protein phosphatase 1, catalytic subunit, beta isoform

**Calculated MW:**

37 kDa

**Observed MW:**

33-40 kDa

**Purification Method:**

Antigen affinity purification

**Recommended Dilutions:**

WB 1:1000-1:8000

IHC 1:400-1:1600

IF/ICC 1:50-1:500

## Applications

**Tested Applications:**

WB, IHC, IF/ICC, ELISA

**Cited Applications:**

WB

**Species Specificity:**

human, mouse, rat

**Cited Species:**

human

**Note-IHC: suggested antigen retrieval with TE buffer pH 9.0; (\*) Alternatively, antigen retrieval may be performed with citrate buffer pH 6.0**

**Positive Controls:**

WB : A549 cells, BxPC-3 cells, NIH/3T3 cells, SH-SY5Y cells, mouse brain tissue

IHC : human skin cancer tissue,

IF/ICC : A549 cells,

## Background Information

PPP1CB, also named as PP-1B, belongs to the PPP phosphatase family and PP-1 subfamily. Protein phosphatase (PP1) is essential for cell division, it participates in the regulation of glycogen metabolism, muscle contractility and protein synthesis. PPP1CB is involved in regulation of ionic conductances and long-term synaptic plasticity. This antibody is specific to PPP1CB.

## Notable Publications

Author	Pubmed ID	Journal	Application
Zhanying Hu	32702076	PLoS Pathog	WB
Yang Guo	34280391	Exp Eye Res	WB

## Storage

**Storage:**

Store at -20°C. Stable for one year after shipment.

**Storage Buffer:**

PBS with 0.02% sodium azide and 50% glycerol pH 7.3.

Aliquoting is unnecessary for -20°C storage

\*\*\* 20ul sizes contain 0.1% BSA

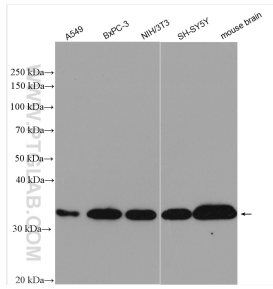
For technical support and original validation data for this product please contact:

T: 1 (888) 4PTGLAB (1-888-478-4522) (toll free in USA), or 1(312) 455-8498 (outside USA)

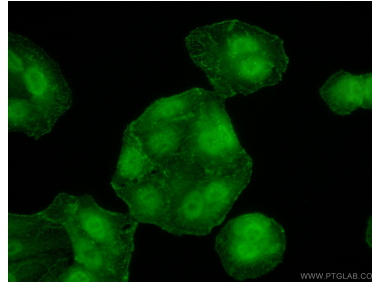
E: proteintech@ptglab.com  
W: ptglab.com

This product is exclusively available under Proteintech Group brand and is not available to purchase from any other manufacturer.

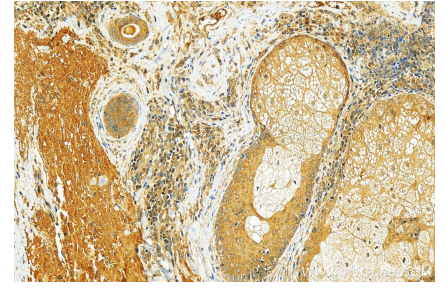
## Selected Validation Data



Various lysates were subjected to SDS PAGE followed by western blot with 55136-1-AP (PPP1CB-Specific antibody) at dilution of 1:4000 incubated at room temperature for 1.5 hours.



Immunofluorescent analysis of (10% Formaldehyde) fixed A549 cells using 55136-1-AP (PPP1CB-Specific antibody) at dilution of 1:50 and Alexa Fluor 488-conjugated AffiniPure Goat Anti-Rabbit IgG(H+L).



Immunohistochemical analysis of paraffin-embedded skin cancer slide using 55136-1-AP (PPP1CB-Specific antibody) at dilution of 1:800 (under 20x lens). Heat mediated antigen retrieval with Tris-EDTA buffer (pH 9.0).