

For Research Use Only

CSPG4/NG2 Polyclonal antibody

Catalog Number: 55027-1-AP **23 Publications**



Basic Information

Catalog Number: 55027-1-AP	GenBank Accession Number: NM_001897	Purification Method: Antigen affinity purification
Size: 150ul, Concentration: 800 µg/ml by Nanodrop;	GeneID (NCBI): 1464	Recommended Dilutions: WB 1:1000-1:4000
Source: Rabbit	Full Name: chondroitin sulfate proteoglycan 4	
Isotype: IgG	Calculated MW: 251 kDa	
	Observed MW: 240-250 kDa, 450kDa	

Applications

Tested Applications: WB, ELISA	Positive Controls: WB : A375 cells,
Cited Applications: FC, IHC, WB	
Species Specificity: human, mouse, rat	
Cited Species: human, rat, mouse	

Background Information

CSPG4, also named as HMW-MAA, MCSP, MCSPG, MEL-CSPG, MSK16 and NG2, is a proteoglycan playing a role in cell proliferation and migration which stimulates endothelial cells motility during microvascular morphogenesis. CSPG4 may inhibit neurite outgrowth and growth cone collapse during axon regeneration. It is cell surface receptor for collagen alpha 2(VI) which may confer cells ability to migrate on that substrate. CSPG4 may regulate MMP16-dependent degradation and invasion of type I collagen participating in melanoma cells invasion properties. It modulates the plasminogen system by enhancing plasminogen activation and inhibiting angiostatin. CSPG4 functions as a signal transducing protein by binding through its cytoplasmic C-terminus scaffolding and signaling proteins. It promotes retraction fiber formation and cell polarization through Rho GTPase activation and stimulates alpha-4, beta-1 integrin-mediated adhesion and spreading by recruiting and activating a signaling cascade through CDC42, ACK1 and BCAR1. CSPG4 activates FAK and ERK1/ERK2 signaling cascades. The antibody is specific to CSPG4.

Notable Publications

Author	Pubmed ID	Journal	Application
Lirong Liang	34585785	J Pineal Res	WB
Yu Shen	31563141	J Neurochem	
Shuisheng Yu	34646136	Front Pharmacol	

Storage

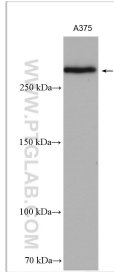
Storage:
Store at -20°C. Stable for one year after shipment.
Storage Buffer:
PBS with 0.02% sodium azide and 50% glycerol pH 7.3.
Aliquoting is unnecessary for -20°C storage

*** 20ul sizes contain 0.1% BSA

For technical support and original validation data for this product please contact:
T: 1 (888) 4PTGLAB (1-888-478-4522) (toll free in USA), or 1(312) 455-8498 (outside USA)
E: proteintech@ptglab.com
W: ptglab.com

This product is exclusively available under Proteintech Group brand and is not available to purchase from any other manufacturer.

Selected Validation Data



A375 cells were subjected to SDS PAGE followed by western blot with 55027-1-AP (CSPG4,NG2 antibody) at dilution of 1:2000 incubated at room temperature for 1.5 hours.