

For Research Use Only

# LELP1 Polyclonal antibody

Catalog Number: 32483-1-AP



## Basic Information

Catalog Number:

32483-1-AP

Size:

150ul, Concentration: 400 ug/ml by Nanodrop;

Source:

Rabbit

Isotype:

IgG

Immunogen Catalog Number:

AG36831

GenBank Accession Number:

BC130507

GeneID (NCBI):

149018

UNIPROT ID:

Q5T871

Full Name:

late cornified envelope-like proline-rich 1

Calculated MW:

11 kDa

Observed MW:

17 kDa

Purification Method:

Antigen affinity Purification

Recommended Dilutions:

WB 1:500-1:2000

## Applications

Tested Applications:

WB, ELISA

Species Specificity:

human, rat

Positive Controls:

WB : human testis tissue, rat testis tissue

## Background Information

Late cornified envelope-like proline-rich protein 1 (LELP1) is part of the epidermal differentiation complex (EDC), a cluster of genes that encode proteins essential for the differentiation of keratinocytes and the formation of the stratum corneum (PMID: 34112911). A single nucleotide polymorphism (SNP) in the LELP1 gene has been associated with atopic dermatitis, a chronic inflammatory skin disorder characterized by elevated levels of serum immunoglobulin E (IgE) and severe skin inflammation (PMID: 26608070).

## Storage

Storage:

Store at -20°C. Stable for one year after shipment.

Storage Buffer:

PBS with 0.02% sodium azide and 50% glycerol pH 7.3.

Aliquoting is unnecessary for -20°C storage

\*\*\* 20ul sizes contain 0.1% BSA

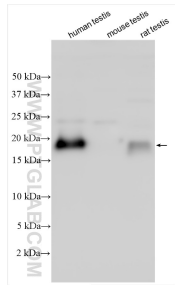
For technical support and original validation data for this product please contact:

T: 1 (888) 4PTGLAB (1-888-478-4522) (toll free in USA), or 1(312) 455-8498 (outside USA)

E: [proteintech@ptglab.com](mailto:proteintech@ptglab.com)  
W: [ptglab.com](http://ptglab.com)

This product is exclusively available under Proteintech Group brand and is not available to purchase from any other manufacturer.

## Selected Validation Data



Various lysates were subjected to SDS PAGE followed by western blot with 32483-1-AP (LELP1 antibody) at dilution of 1:1000 incubated at room temperature for 1.5 hours.