

For Research Use Only

PRAS40 Polyclonal antibody

Catalog Number: 32456-1-AP



Basic Information

Catalog Number:

32456-1-AP

Size:

150ul, Concentration: 250 ug/ml by Nanodrop;

Source:

Rabbit

Isotype:

IgG

Immunogen Catalog Number:

AG35446

GenBank Accession Number:

BC051844

GeneID (NCBI):

84335

UNIPROT ID:

Q96B36

Full Name:

AKT1 substrate 1 (proline-rich)

Calculated MW:

27 kDa

Observed MW:

40 kDa

Purification Method:

Antigen affinity Purification

Recommended Dilutions:

WB: 1:2000-1:12000

IP: 0.5-4.0 ug for 1.0-3.0 mg of total protein lysate

Applications

Tested Applications:

WB, IP, ELISA

Species Specificity:

human

Positive Controls:

WB : A549 cells, Calu-1 cells, HeLa cells, HepG2 cells, L02 cells

IP : HeLa cells,

Background Information

PRAS40 (40 kDa proline-rich AKT substrate) is also named as AKT1S1 (Proline-rich AKT1 substrate 1). PRAS40 is a substrate of Akt and a component of the mammalian target of rapamycin complex 1 (mTORC1) (PMID: 28978182). Locating at the crossroad of the PI3K/Akt pathway and the mTOR pathway, PRAS40 is phosphorylated by growth factors or other stimuli, and regulates the activation of these signaling pathways in turn (PMID: 28978182). PRAS40 is expressed in a variety of tissues in vivo and has multiple phosphorylation sites, which its activity is closely related to phosphorylation. Studies have shown that PRAS40 is involved in regulating cell growth, cell apoptosis, oxidative stress, autophagy and angiogenesis, as well as various of signalling pathways such as mammalian target of mammalian target rapamycin (mTOR), protein kinase B (PKB/Akt), nuclear factor kappa-B (NF- κ B) proto-oncogene serine/threonine-protein kinase PIM-1 (PIM1) and pyruvate kinase M2 (PKM2) (PMID: 33504218).

Storage

Storage:

Store at -20°C. Stable for one year after shipment.

Storage Buffer:

PBS with 0.02% sodium azide and 50% glycerol, pH7.3

Aliquoting is unnecessary for -20°C storage

*** 20ul sizes contain 0.1% BSA

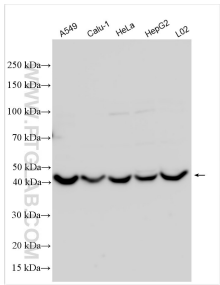
For technical support and original validation data for this product please contact:

T: 1 (888) 4PTGLAB (1-888-478-4522) (toll free in USA), or 1(312) 455-8498 (outside USA)

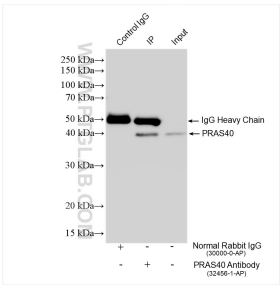
E: proteintech@ptglab.com
W: ptglab.com

This product is exclusively available under Proteintech Group brand and is not available to purchase from any other manufacturer.

Selected Validation Data



Various lysates were subjected to SDS PAGE followed by western blot with 32456-1-AP (PRAS40 antibody) at dilution of 1:6000 incubated at room temperature for 1.5 hours.



IP result of anti-PRAS40 (IP:32456-1-AP, 4ug; Detection:32456-1-AP 1:2000) with HeLa cells lysate 1480 ug.