

For Research Use Only

ABL1 Polyclonal antibody

Catalog Number:32207-1-AP



Basic Information

Catalog Number: 32207-1-AP	GenBank Accession Number: NM_005157	Purification Method: Antigen affinity Purification
Size: 150ul , Concentration: 230 ug/ml by Nanodrop;	GeneID (NCBI): 25	Recommended Dilutions: WB 1:1000-1:4000
Source: Rabbit	UNIPROT ID: P00519	
Isotype: IgG	Full Name: c-abl oncogene 1, receptor tyrosine kinase	
Immunogen Catalog Number: AG26145	Calculated MW: 123 kDa	
	Observed MW: 120-130 kDa	

Applications

Tested Applications: WB, ELISA	Positive Controls: WB : HEK-293T cells, HeLa cells, Jurkat cells, LNCaP cells
Species Specificity: human	

Background Information

ABL1, also named as ABL, JTK7, c-ABL and p150, belongs to the protein kinase superfamily, Tyr protein kinase family and ABL subfamily. ABL1 regulates cytoskeleton remodeling during cell differentiation, cell division and cell adhesion. ABL1 localizes to dynamic actin structures, and phosphorylates CRK and CRKL, DOK1, and other proteins controlling cytoskeleton dynamics. It regulates DNA repair potentially by activating the proapoptotic pathway when the DNA damage is too severe to be repaired. ABL1 catalyze the reaction: ATP + a [protein]-L-tyrosine = ADP + a [protein]-L-tyrosine phosphate. A chromosomal aberration involving ABL1 is a cause of chronic myeloid leukemia (CML) [MIM:608232]. Translocation t(9;22)(q34;q11) with BCR. The translocation produces a BCR-ABL found also in acute myeloid leukemia (AML) and acute lymphoblastic leukemia (ALL).

Storage

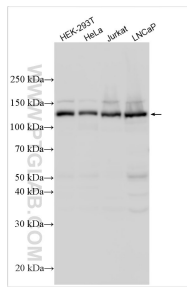
Storage:
Store at -20°C. Stable for one year after shipment.
Storage Buffer:
PBS with 0.02% sodium azide and 50% glycerol pH 7.3.
Aliquoting is unnecessary for -20°C storage

*** 20ul sizes contain 0.1% BSA

For technical support and original validation data for this product please contact:
T: 1 (888) 4PTGLAB (1-888-478-4522) (toll free in USA), or 1(312) 455-8498 (outside USA)
E: proteintech@ptglab.com
W: ptglab.com

This product is exclusively available under Proteintech Group brand and is not available to purchase from any other manufacturer.

Selected Validation Data



Various lysates were subjected to SDS PAGE followed by western blot with 32207-1-AP (ABL1 antibody) at dilution of 1:2000 incubated at room temperature for 1.5 hours.