

For Research Use Only

ACP6 Polyclonal antibody

Catalog Number: 32084-1-AP



Basic Information

Catalog Number: 32084-1-AP	GenBank Accession Number: BC034686	Purification Method: Antigen affinity purification
Size: 150ul , Concentration: 450 µg/ml by Nanodrop;	GeneID (NCBI): 51205	Recommended Dilutions: WB 1:1000-1:4000
Source: Rabbit	UNIPROT ID: Q9NPH0	
Isotype: IgG	Full Name: acid phosphatase 6, lysophosphatidic	
Immunogen Catalog Number: AG34812	Calculated MW: 428 aa, 49 kDa	
	Observed MW: 43 kDa	

Applications

Tested Applications: WB, ELISA	Positive Controls: WB : A2780 cells,
Species Specificity: human	

Background Information

Lysophosphatidic acid phosphatase type 6 (ACP6) is an LPA-specific acid phosphatase that hydrolyzes LPA to monoacylglycerol (MAG) and phosphate. Previous studies have shown that ACP6 is localized in the mitochondria with ubiquitous expression throughout all tissues, and high expression levels in kidney, heart, small intestine, muscle, and liver. Through specifically hydrolyzing LPA, ACP6 regulates mitochondrial lipid biosynthesis, thereby controlling important mitochondrial functions. It was also shown that ACP6 might be involved in tumor progression, suggesting that ACP6 could be a good candidate marker for the prognosis of esophageal cancer. Uniprot showed that by alternative splicing, ACP6 may have two kinds of shear fragments with molecular weights of 49 and 31kDa respectively. (PMID: 23807634)

Storage

Storage:
Store at -20°C. Stable for one year after shipment.
Storage Buffer:
PBS with 0.02% sodium azide and 50% glycerol pH 7.3.
Aliquoting is unnecessary for -20°C storage

*** 20ul sizes contain 0.1% BSA

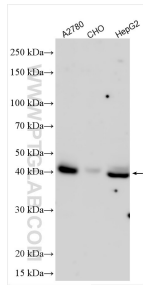
For technical support and original validation data for this product please contact:

T: 1 (888) 4PTGLAB (1-888-478-4522) (toll free in USA), or 1(312) 455-8498 (outside USA)

E: proteintech@ptglab.com
W: ptglab.com

This product is exclusively available under Proteintech Group brand and is not available to purchase from any other manufacturer.

Selected Validation Data



Various lysates were subjected to SDS PAGE followed by western blot with 32084-1-AP (ACP6 antibody) at dilution of 1:2000 incubated at room temperature for 1.5 hours.