

For Research Use Only

ESM1 Polyclonal antibody

Catalog Number: 32079-1-AP



Basic Information

Catalog Number: 32079-1-AP	GenBank Accession Number: BC011989	Purification Method: Antigen affinity Purification
Size: 150ul , Concentration: 600 ug/ml by Nanodrop;	GeneID (NCBI): 11082	Recommended Dilutions: WB 1:1000-1:4000
Source: Rabbit	UNIPROT ID: Q9NQ30	
Isotype: IgG	Full Name: endothelial cell-specific molecule 1	
Immunogen Catalog Number: AG36144	Calculated MW: 184 aa, 20 kDa	
	Observed MW: 20 kDa	

Applications

Tested Applications: WB, ELISA	Positive Controls: WB : HUVEC cells,
Species Specificity: human	

Background Information

ESM1, also known as endothelial cell-specific molecule 1 or endocan, is a protein-coding gene that encodes a secreted protein. It is primarily expressed in endothelial cells of human lung and kidney tissues, and its expression is regulated by cytokines, suggesting a role in endothelium-dependent pathological disorders. ESM1 has been implicated in various diseases, including gastric cancer, hypertension, and cervical cancer. In cervical cancer, ESM1 is overexpressed and acts as an independent prognostic factor associated with poor clinical outcomes. It promotes carcinoma angiogenesis and cervical squamous cell carcinoma progression through the VEGF/ERK signaling pathway.

Storage

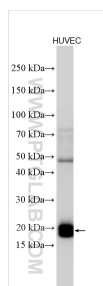
Storage:
Store at -20°C. Stable for one year after shipment.
Storage Buffer:
PBS with 0.02% sodium azide and 50% glycerol pH 7.3.
Aliquoting is unnecessary for -20°C storage

*** 20ul sizes contain 0.1% BSA

For technical support and original validation data for this product please contact:
T: 1 (888) 4PTGLAB (1-888-478-4522) (toll free in USA), or 1(312) 455-8498 (outside USA)
E: proteintech@ptglab.com
W: ptglab.com

This product is exclusively available under Proteintech Group brand and is not available to purchase from any other manufacturer.

Selected Validation Data



HUVEC cells were subjected to SDS PAGE followed by western blot with 32079-1-AP (ESM1 antibody) at dilution of 1:2000 incubated at room temperature for 1.5 hours.