

For Research Use Only

KIR2DL4/CD158d Polyclonal antibody

Catalog Number:32059-1-AP



Basic Information

Catalog Number:

32059-1-AP

Size:

150ul , Concentration: 500 ug/ml by Nanodrop;

Source:

Rabbit

Isotype:

IgG

GenBank Accession Number:

BC041611

GeneID (NCBI):

3805

UNIPROT ID:

Q99706

Full Name:

killer cell immunoglobulin-like receptor, two domains, long cytoplasmic tail, 4

Calculated MW:

377 aa, 42 kDa

Observed MW:

45 kDa

Purification Method:

Antigen affinity Purification

Recommended Dilutions:

WB 1:500-1:2000

Applications

Tested Applications:

WB, ELISA

Species Specificity:

human

Positive Controls:

WB : HL-60 cells, NK-92 cells

Background Information

Killer cell immunoglobulin-like receptors (KIRs) are transmembrane glycoproteins expressed by natural killer cells and subsets of T cells that regulate their responsiveness to signals received from their environment (PMID: 22934097). Killer cell immunoglobulin-like receptor 2DL4 (KIR2DL4, also known as CD158D and KIR103AS) is an unusual member of the KIRs family, which activates the cytotoxicity of NK cells. KIR2DL4 has two immunoglobulin domains and a single immunoreceptor tyrosine-based inhibition motif (ITIM) in the cytoplasmic tail with weak inhibitory potential (PMID: 12055234).

Storage

Storage:

Store at -20°C. Stable for one year after shipment.

Storage Buffer:

PBS with 0.02% sodium azide and 50% glycerol pH 7.3.

Aliquoting is unnecessary for -20°C storage

*** 20ul sizes contain 0.1% BSA

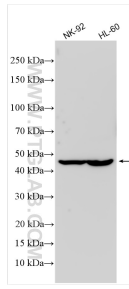
For technical support and original validation data for this product please contact:

T: 1 (888) 4PTGLAB (1-888-478-4522) (toll free in USA), or 1(312) 455-8498 (outside USA)

E: proteintech@ptglab.com
W: ptglab.com

This product is exclusively available under Proteintech Group brand and is not available to purchase from any other manufacturer.

Selected Validation Data



Various lysates were subjected to SDS PAGE followed by western blot with 32059-1-AP (KIR2DL4 antibody) at dilution of 1:1000 incubated at room temperature for 1.5 hours.