

For Research Use Only

# KBTBD8 Polyclonal antibody

Catalog Number: 31970-1-AP

Featured Product



## Basic Information

**Catalog Number:**

31970-1-AP

**Size:**

150ul , Concentration: 400 ug/ml by Nanodrop;

**Source:**

Rabbit

**Isotype:**

IgG

**Immunogen Catalog Number:**

AG36219

**GenBank Accession Number:**

NM\_032505.2

**GeneID (NCBI):**

84541

**UNIPROT ID:**

Q8NFY9

**Full Name:**

kelch repeat and BTB (POZ) domain containing 8

**Calculated MW:**

69 kDa 601aa

**Observed MW:**

60 kDa

**Purification Method:**

Antigen affinity Purification

**Recommended Dilutions:**

WB 1:500-1:3000

## Applications

**Tested Applications:**

WB, ELISA

**Species Specificity:**

human

**Positive Controls:**

WB : Daudi cells, RKO cells, U-118 MG cells

## Background Information

Kelch repeat and BTB domain containing 8 (KBTBD8, also known as TAKRP and TA-KRP) is a member of the BTB-kelch family of proteins, which is specifically localized at the Golgi apparatus in nondividing cells and becomes restricted to the spindle apparatus upon mitosis (PMID: 23578279). KBTBD family proteins are involved in ubiquitination in various cells and tissues and are correlated with human muscle diseases (PMID: 9878064; 16547521; 24959344). The expression level of KBTBD8 might affect the proliferation and migration of epithelial ovarian cancer (PMID: 33109073).

## Storage

**Storage:**

Store at -20°C. Stable for one year after shipment.

**Storage Buffer:**

PBS with 0.02% sodium azide and 50% glycerol pH 7.3.

Aliquoting is unnecessary for -20°C storage

\*\*\* 20ul sizes contain 0.1% BSA

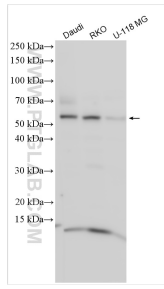
For technical support and original validation data for this product please contact:

T: 1 (888) 4PTGLAB (1-888-478-4522) (toll free in USA), or 1(312) 455-8498 (outside USA)

E: [proteintech@ptglab.com](mailto:proteintech@ptglab.com)  
W: [ptglab.com](http://ptglab.com)

This product is exclusively available under Proteintech Group brand and is not available to purchase from any other manufacturer.

## Selected Validation Data



Various lysates were subjected to SDS PAGE followed by western blot with 31970-1-AP (KBTBD8 antibody) at dilution of 1:1500 incubated at room temperature for 1.5 hours.