

For Research Use Only

KCNA6 Polyclonal antibody

Catalog Number: 31900-1-AP



Basic Information

Catalog Number: 31900-1-AP	GenBank Accession Number: NM_002235.3	Purification Method: Antigen affinity Purification
Size: 150ul , Concentration: 550 ug/ml by Nanodrop;	GeneID (NCBI): 3742	Recommended Dilutions: WB: 1:500-1:1000
Source: Rabbit	UNIPROT ID: P17658	IHC: 1:50-1:500
Isotype: IgG	Full Name: potassium voltage-gated channel, shaker-related subfamily, member 6	IF-P: 1:50-1:500
Immunogen Catalog Number: AG35654	Calculated MW: 59 kDa 529aa	
	Observed MW: 65 kDa	

Applications

Tested Applications: WB, IHC, IF-P, ELISA	Positive Controls:
Species Specificity: human, mouse, rat	WB : Daudi cells, Jurkat cells, Raji cells, TT cells, U2OS cells
Note-IHC: suggested antigen retrieval with TE buffer pH 9.0; (*) Alternatively, antigen retrieval may be performed with citrate buffer pH 6.0	IHC : mouse brain tissue, rat brain tissue
	IF-P : mouse cerebellum tissue,

Background Information

The Shaker-like Kv1 potassium channel family comprises 8 α subunits (Kv1.1-Kv1.8), which are key regulators of neuronal excitability in mammals (PMID: 7842011; 9581771; 22612818). Potassium voltage-gated channel subfamily A member 6 (KCNA6, also known as HBK2, Kv1.6, and PPP1R96) is a multi-pass membrane protein that is mainly expressed in the central and peripheral nervous system (PMID: 12042352; 8872310). The concentration of the Kv1.6 channel in the cell membrane can modulate the kinetic properties of Kv1.6-induced K⁺ current (PMID: 14575698).

Storage

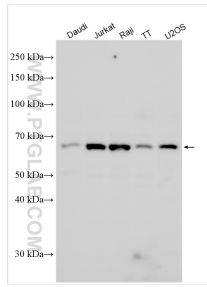
Storage:
Store at -20°C. Stable for one year after shipment.
Storage Buffer:
PBS with 0.02% sodium azide and 50% glycerol, pH7.3
Aliquoting is unnecessary for -20°C storage

*** 20ul sizes contain 0.1% BSA

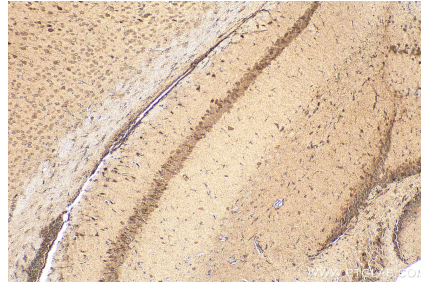
For technical support and original validation data for this product please contact:
T: 1 (888) 4PTGLAB (1-888-478-4522) (toll free in USA), or 1(312) 455-8498 (outside USA)
E: proteintech@ptglab.com
W: ptglab.com

This product is exclusively available under Proteintech Group brand and is not available to purchase from any other manufacturer.

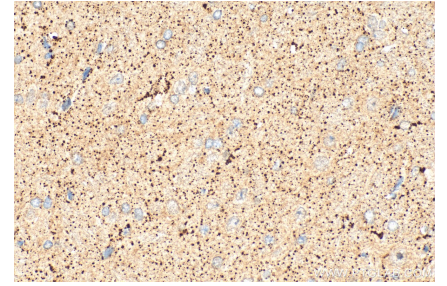
Selected Validation Data



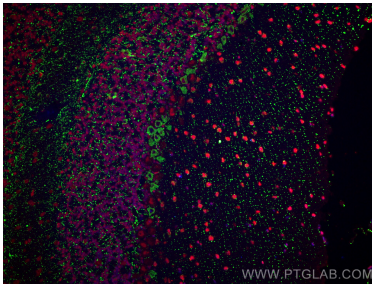
Various lysates were subjected to SDS PAGE followed by western blot with 31900-1-AP (KCNA6 antibody) at dilution of 1:800 incubated at room temperature for 1.5 hours.



Immunohistochemical analysis of paraffin-embedded mouse brain tissue slide using 31900-1-AP (KCNA6 antibody) at dilution of 1:200 (under 10x lens). Heat mediated antigen retrieval with Tris-EDTA buffer (pH 9.0).



Immunohistochemical analysis of paraffin-embedded rat brain tissue slide using 31900-1-AP (KCNA6 antibody) at dilution of 1:200 (under 40x lens). Heat mediated antigen retrieval with Tris-EDTA buffer (pH 9.0).



Immunofluorescent analysis of (4% PFA) fixed paraffin-embedded mouse cerebellum tissue using KCNA6 antibody (31900-1-AP) at dilution of 1:200 and CoraLite®488-Conjugated Goat Anti-Rabbit IgG(H+L) (SA00013-2), FUS/TLS antibody (68262-1-Ig, Clone: 1B4F8, red). Heat mediated antigen retrieval with Tris-EDTA buffer (pH 9.0).