

For Research Use Only

GPR158 Polyclonal antibody

Catalog Number: 31846-1-AP



Basic Information

Catalog Number: 31846-1-AP	GenBank Accession Number: BC157124	Purification Method: Antigen affinity Purification
Size: 150ul , Concentration: 750 ug/ml by Nanodrop;	GeneID (NCBI): 57512	Recommended Dilutions: WB 1:500-1:2000
Source: Rabbit	UNIPROT ID: Q5T848	
Isotype: IgG	Full Name: G protein-coupled receptor 158	
Immunogen Catalog Number: AG34602	Calculated MW: 135 kDa	
	Observed MW: 150 kDa	

Applications

Tested Applications: WB, ELISA	Positive Controls: WB : HEK-293T cells, HeLa cells
Species Specificity: human	

Background Information

G protein-coupled receptors (GPCR) are the largest family of proteins encoded in mammalian genomes that detect extracellular signals to program cellular response, which are essential to understanding physiology, disease, and drug development (PMID: 29249361; 29298813). G protein-coupled receptor 158 (GPR158, also known as mGlyR) is a class C orphan GPCR prominently expressed in brain tissue, where it controls synapse formation and function (PMID: 22689652; 34793198). It can transduce signals by coupling to the regulator of protein signaling (RGS) proteins and be related to the development of major depressive disorder and prostate cancer (PMID: 36996198; 29419376; 25693195).

Storage

Storage:
Store at -20°C. Stable for one year after shipment.
Storage Buffer:
PBS with 0.02% sodium azide and 50% glycerol pH 7.3.
Aliquoting is unnecessary for -20°C storage

*** 20ul sizes contain 0.1% BSA

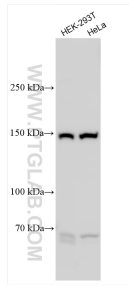
For technical support and original validation data for this product please contact:

T: 1 (888) 4PTGLAB (1-888-478-4522) (toll free in USA), or 1(312) 455-8498 (outside USA)

E: proteintech@ptglab.com
W: ptglab.com

This product is exclusively available under Proteintech Group brand and is not available to purchase from any other manufacturer.

Selected Validation Data



Various lysates were subjected to SDS PAGE followed by western blot with 31846-1-AP (GPR158 antibody) at dilution of 1:1000 incubated at room temperature for 1.5 hours.