

For Research Use Only

# VLGR1 Polyclonal antibody

Catalog Number: 31628-1-AP



## Basic Information

**Catalog Number:**

31628-1-AP

**Size:**

150ul , Concentration: 350 ug/ml by Nanodrop;

**Source:**

Rabbit

**Isotype:**

IgG

**Immunogen Catalog Number:**

AG34635

**GenBank Accession Number:**

NM\_032119

**GeneID (NCBI):**

84059

**UNIPROT ID:**

Q8WXG9

**Full Name:**

G protein-coupled receptor 98

**Calculated MW:**

693 kDa

**Observed MW:**

217 kDa

**Purification Method:**

Antigen affinity Purification

**Recommended Dilutions:**

WB 1:500-1:1000

IP 0.5-4.0 ug for 1.0-3.0 mg of total protein lysate

IF/ICC 1:200-1:800

## Applications

**Tested Applications:**

WB, IF/ICC, IP, ELISA

**Species Specificity:**

human

**Positive Controls:**

WB : HEK-293T cells, SH-SY5Y cells

IP : SH-SY5Y cells,

IF/ICC : K-562 cells,

## Background Information

VLGR1 (very large G protein-coupled receptor-1), also known as ADGRV1, GPR98, and MASS, has a molecular weight of up to 700 kDa, making it the largest member of the 33 adhesive G protein-coupled receptors (ADGRs), a unique subfamily of the GPCR superfamily. The full-length VLGR1 encompasses 6300 amino acids and thus is difficult to analyze by electrophoresis. Vlgr1 is a core component of ankle-link complex in inner ear hair cells. Knock-out and mutation mouse models show that loss of Vlgr1 function leads to abnormal stereociliary development and hearing loss, indicating crucial roles of Vlgr1 in hearing transduction or auditory system development (PMID: 23180093). Western blot analysis detected VLGR1a isoform at an apparent molecular mass of 217 kDa .

## Storage

**Storage:**

Store at -20°C. Stable for one year after shipment.

**Storage Buffer:**

PBS with 0.02% sodium azide and 50% glycerol pH 7.3.

Aliquoting is unnecessary for -20°C storage

\*\*\* 20ul sizes contain 0.1% BSA

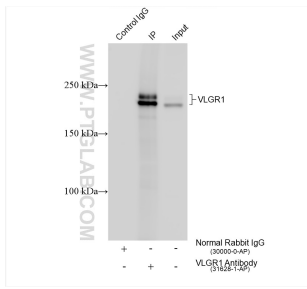
For technical support and original validation data for this product please contact:

T: 1 (888) 4PTGLAB (1-888-478-4522) (toll free in USA), or 1(312) 455-8498 (outside USA)

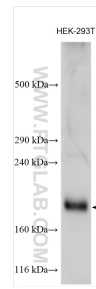
E: proteintech@ptglab.com  
W: ptglab.com

This product is exclusively available under Proteintech Group brand and is not available to purchase from any other manufacturer.

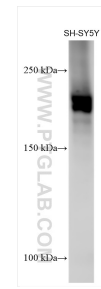
## Selected Validation Data



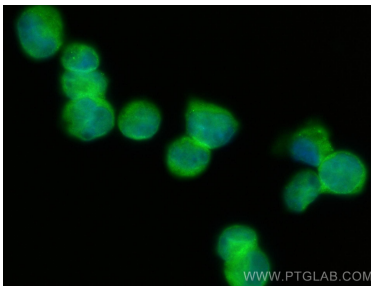
IP result of anti-VLGR1 (IP:31628-1-AP, 4ug; Detection:31628-1-AP 1:500) with SH-SY5Y cells lysate 1920 ug.



Various lysates were subjected to SDS PAGE followed by western blot with 31628-1-AP (VLGR1 antibody) at dilution of 1:600 incubated at room temperature for 1.5 hours.



Various lysates were subjected to SDS PAGE followed by western blot with 31628-1-AP (VLGR1 antibody) at dilution of 1:600 incubated at room temperature for 1.5 hours.



Immunofluorescent analysis of (4% PFA) fixed K-562 cells using VLGR1 antibody (31628-1-AP) at dilution of 1:400 and CoraLite®488-Conjugated AffiniPure Goat Anti-Rabbit IgG(H+L) (SA00013-2).