

For Research Use Only

CSMD2 Polyclonal antibody

Catalog Number: 31573-1-AP



Basic Information

Catalog Number: 31573-1-AP	GenBank Accession Number: NM_001281956	Purification Method: Antigen affinity Purification
Size: 150ul , Concentration: 400 ug/ml by Nanodrop;	GeneID (NCBI): 114784	Recommended Dilutions: WB 1:500-1:1000
Source: Rabbit	UNIPROT ID: Q7Z408	
Isotype: IgG	Full Name: CUB and Sushi multiple domains 2	
Immunogen Catalog Number: AG36106	Calculated MW: 380kDa	
	Observed MW: 380 kDa	

Applications

Tested Applications: WB, ELISA	Positive Controls: WB : mouse brain tissue, rat brain tissue
Species Specificity: Human, mouse, rat	

Background Information

CUB and sushi multiple domains 2 (CSMD2), located on the short arm of human chromosome 1 (1p35.1), encodes a single-pass transmembrane protein with a large extracellular domain consisting of CUB and Sushi domain repeats. CSMD2 is highly expressed in the developing and mature brain and has been linked to schizophrenia (PMID:31068362). The full-length molecular weight of CSMD2 protein is 380 kDa.

Storage

Storage:
Store at -20°C. Stable for one year after shipment.
Storage Buffer:
PBS with 0.02% sodium azide and 50% glycerol pH 7.3.
Aliquoting is unnecessary for -20°C storage

***** 20ul sizes contain 0.1% BSA**

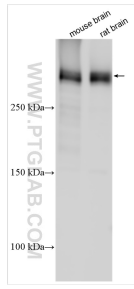
For technical support and original validation data for this product please contact:

T: 1 (888) 4PTGLAB (1-888-478-4522) (toll free in USA), or 1(312) 455-8498 (outside USA)

E: proteintech@ptglab.com
W: ptglab.com

This product is exclusively available under Proteintech Group brand and is not available to purchase from any other manufacturer.

Selected Validation Data



Various lysates were subjected to SDS PAGE followed by western blot with 31573-1-AP (CSMD2 antibody) at dilution of 1:800 incubated at room temperature for 1.5 hours.