

For Research Use Only

# AKAP8 Polyclonal antibody

Catalog Number: 31542-1-AP



## Basic Information

<b>Catalog Number:</b> 31542-1-AP	<b>GenBank Accession Number:</b> NM_005858.3	<b>Purification Method:</b> Antigen affinity Purification
<b>Size:</b> 150ul , Concentration: 400 µg/ml by Nanodrop;	<b>GeneID (NCBI):</b> 10270	<b>Recommended Dilutions:</b> WB 1:5000-1:50000
<b>Source:</b> Rabbit	<b>UNIPROT ID:</b> O43823	
<b>Isotype:</b> IgG	<b>Full Name:</b> A kinase (PKA) anchor protein 8	
<b>Immunogen Catalog Number:</b> AG35816	<b>Calculated MW:</b> 76kDa 692aa	
	<b>Observed MW:</b> 95 kDa	

## Applications

<b>Tested Applications:</b> WB, ELISA	<b>Positive Controls:</b> WB : A549 cells, HL-60 cells, HeLa cells, HepG2 cells
<b>Species Specificity:</b> Human	

## Background Information

AKAP8 (A-kinase anchor protein 8), also called AKAP95, is a A-kinase anchor protein that directs activity of protein kinase A by tethering the enzyme near its physiologic substrates (PMID: 9473338; 10601332). It is associated with chromatin and nuclear matrix which has a remarkable activity in promoting chromatin transcription (PMID: 31980632), and it is also required for cell cycle G2/M transition and histone deacetylation during mitosis (PMID: 16980585).

## Storage

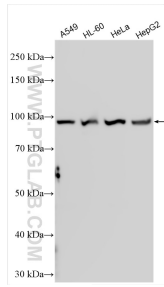
**Storage:**  
Store at -20°C. Stable for one year after shipment.  
**Storage Buffer:**  
PBS with 0.02% sodium azide and 50% glycerol pH 7.3.  
Aliquoting is unnecessary for -20°C storage

**\*\*\* 20ul sizes contain 0.1%BSA**

For technical support and original validation data for this product please contact:  
T: 1 (888) 4PTGLAB (1-888-478-4522) (toll free in USA), or 1(312) 455-8498 (outside USA)  
E: proteintech@ptglab.com  
W: ptglab.com

This product is exclusively available under Proteintech Group brand and is not available to purchase from any other manufacturer.

## Selected Validation Data



Various lysates were subjected to SDS PAGE followed by western blot with 31542-1-AP (AKAP8 antibody) at dilution of 1:15000 incubated at room temperature for 1.5 hours.