

For Research Use Only

MCP-1 Polyclonal antibody

Catalog Number: 31520-1-AP



Basic Information

Catalog Number: 31520-1-AP	GenBank Accession Number: NM_031530	Purification Method: Antigen affinity Purification
Size: 150ul , Concentration: 500 ug/ml by Nanodrop;	GeneID (NCBI): 24770	Recommended Dilutions: WB 1:500-1:2000
Source: Rabbit	UNIPROT ID: P14844	
Isotype: IgG	Full Name: chemokine (C-C motif) ligand 2	
	Calculated MW: 16 kDa	
	Observed MW: 20 kDa	

Applications

Tested Applications: WB, ELISA	Positive Controls: WB : LPS and Protein transport inhibitor treated RAW 264.7 cells,
Species Specificity: Rat, mouse	

Background Information

Monocyte chemoattractant protein-1 (MCP-1/CCL2) is one of the key chemokines that regulate migration and infiltration of monocytes/macrophages. Both CCL2 and its receptor CCR2 have been demonstrated to be induced and involved in various diseases. Migration of monocytes from the blood stream across the vascular endothelium is required for routine immunological surveillance of tissues, as well as in response to inflammation.

Storage

Storage:
Store at -20°C. Stable for one year after shipment.
Storage Buffer:
PBS with 0.02% sodium azide and 50% glycerol pH 7.3.
Aliquoting is unnecessary for -20°C storage

*** 20ul sizes contain 0.1% BSA

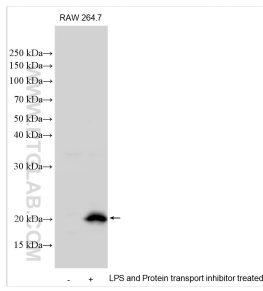
For technical support and original validation data for this product please contact:

T: 1 (888) 4PTGLAB (1-888-478-4522) (toll free in USA), or 1(312) 455-8498 (outside USA)

E: proteintech@ptglab.com
W: ptglab.com

This product is exclusively available under Proteintech Group brand and is not available to purchase from any other manufacturer.

Selected Validation Data



Untreated, LPS and Brefeldin A treated RAW 264.7 cells were subjected to SDS PAGE followed by western blot with 31520-1-AP (CCL2 antibody) at dilution of 1:1000 incubated at room temperature for 1.5 hours.