

For Research Use Only

ACE2 Polyclonal antibody

Catalog Number: 31518-1-AP



Basic Information

Catalog Number:

31518-1-AP

Size:

150ul , Concentration: 500 µg/ml by Nanodrop;

Source:

Rabbit

Isotype:

IgG

GenBank Accession Number:

BC048094

GeneID (NCBI):

59272

UNIPROT ID:

Q9BYF1

Full Name:

angiotensin I converting enzyme (peptidyl-dipeptidase A) 2

Calculated MW:

805 aa, 92 kDa

Observed MW:

120 kDa

Purification Method:

Antigen affinity Purification

Recommended Dilutions:

WB 1:500-1:1000

Applications

Tested Applications:

WB, ELISA

Species Specificity:

human, mouse

Positive Controls:

WB : mouse kidney tissue, mouse small intestine tissue

Background Information

Angiotensin-converting enzyme 2 (ACE2), a homolog of angiotensin-converting enzyme 1 (ACE1), was identified in 2000. ACE2 provides protection against several chronic diseases, including cardiovascular diseases, lung injury, and diabetes. Besides chronic diseases, ACE2 plays a crucial role in severe acute respiratory syndrome coronavirus (SARS-CoV) infection and severe acute respiratory syndrome coronavirus 2 (SARS-CoV-2) infection (hereafter named COVID-19). ACE2 is the host receptor for SARS-CoV and SARS-CoV-2. (PMID: 37608279)

Storage

Storage:

Store at -20°C. Stable for one year after shipment.

Storage Buffer:

PBS with 0.02% sodium azide and 50% glycerol pH 7.3.

Aliquoting is unnecessary for -20°C storage

*** 20ul sizes contain 0.1% BSA

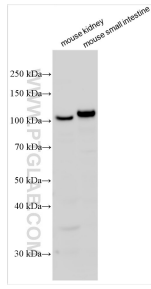
For technical support and original validation data for this product please contact:

T: 1 (888) 4PTGLAB (1-888-478-4522) (toll free in USA), or 1(312) 455-8498 (outside USA)

E: proteintech@ptglab.com
W: ptglab.com

This product is exclusively available under Proteintech Group brand and is not available to purchase from any other manufacturer.

Selected Validation Data



Various lysates were subjected to SDS PAGE followed by western blot with 31518-1-AP (ACE2 antibody) at dilution of 1:800 incubated at room temperature for 1.5 hours.